

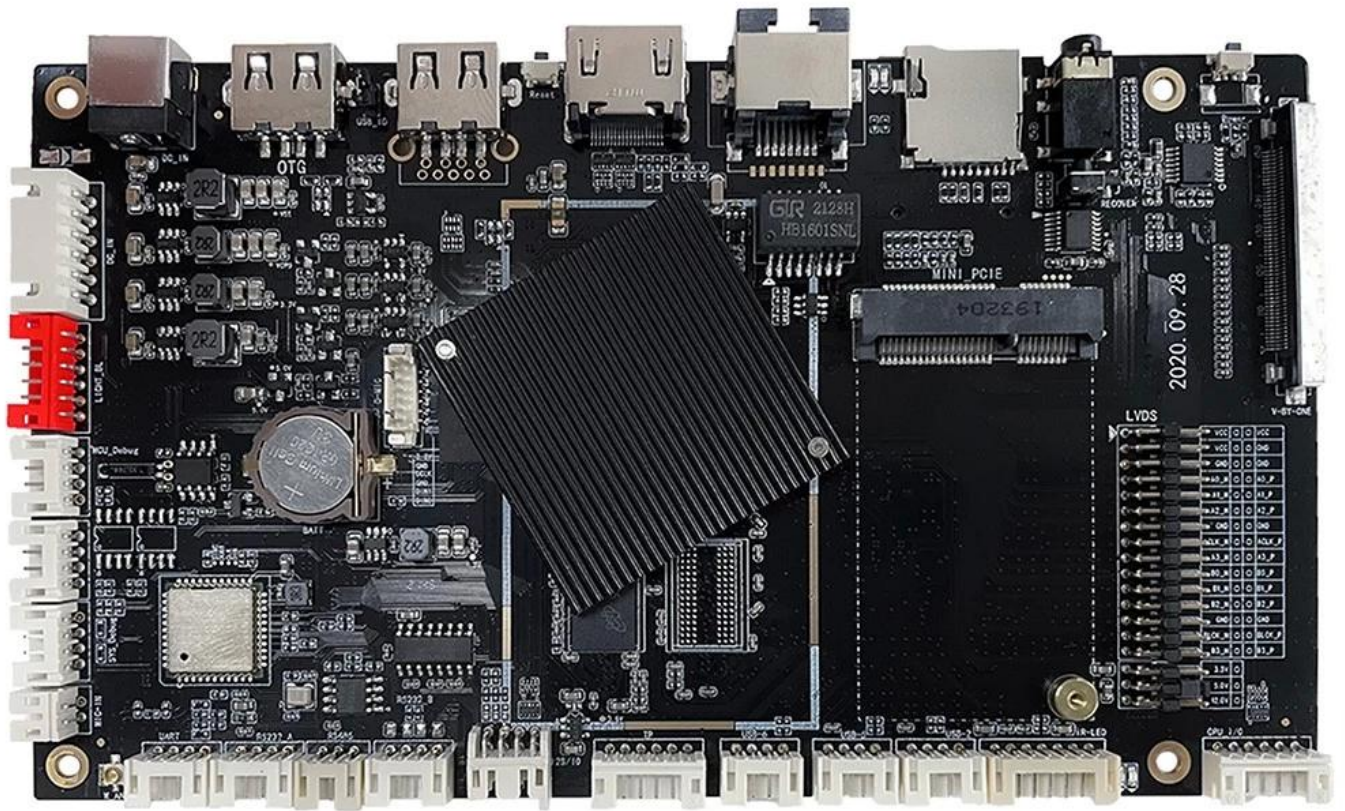
# ARM Cortex-A55 T972 4K 60FPS 1.98mm 12MP 4G LTE Cat.4

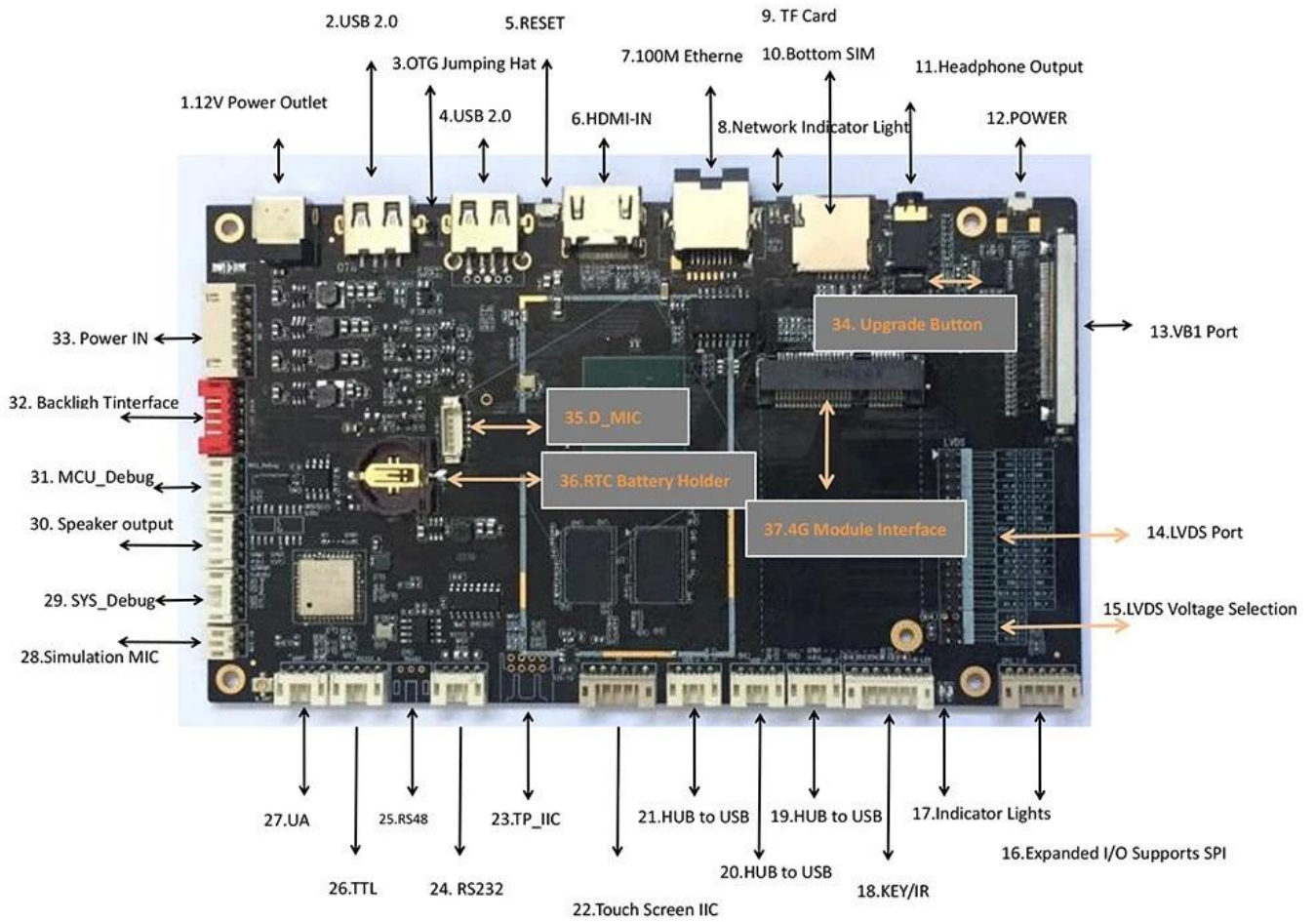
## Overview

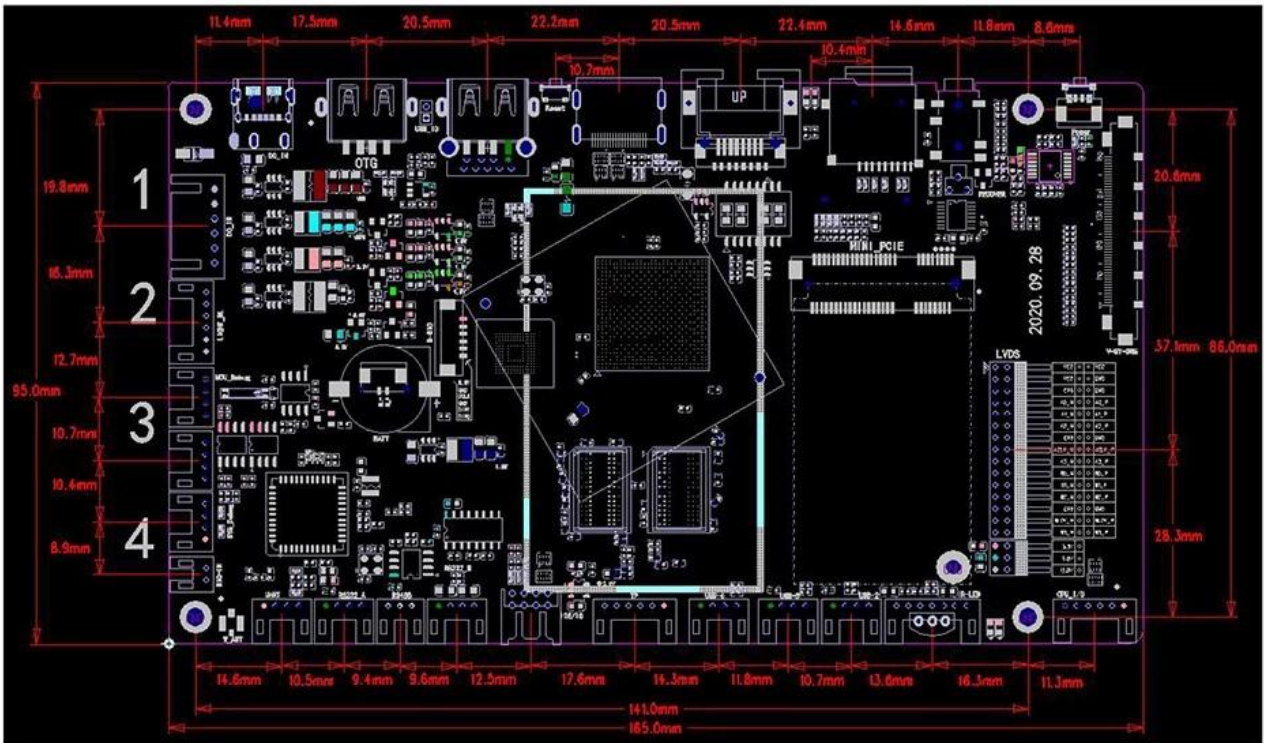
Processor	ARM Cortex-A55 T972
GPU	ARM Mail-450
Cache	2x 32KB L1
Memory	4x 64-bit channels, 32/16 channels
Display	9.0" LCD
Connectivity	2.4 GHz (5/2.4) BT4.2

## Camera/Display Features

Display	1x LVDS LCD 50/60" 4K*2K@60
Camera	12MP PWM Dimmer
USB2.0	1x USB 2.0 * 1, * 3 USB
UART	4x 232 (TTL) / 485 UART
SPI	1x SPI
HDMI	1x HDMI 2.1 4K*2K@60
GPIO	4x GPIO
PDM	4x PDM
PCI-E	1x PCI-E 4G
I2C	1x I2C
IO	IO SPI, ADC
RJ45	RJ45 10/100
RTC	RTC
OTA	USB OTA
Storage	128GB * 80







PCB : 4-layer board  
 Size : 165mm\*95mm, Thickness 1.2mm  
 Screw hole specifications :  $\Phi 3.0\text{mm} \times 4$

Amlogic T792 Android  
 :  
 O2O

Amlogic T972 Cortex-A55 1.9 GPU Mali-G314

### 1.3

- ◆

