

Rockchip RK3588 Android 12

Processor	Rockchip RK3588
GPU	ARM Mali-G610 MC4 OpenGL ES 1.1/2.0/3.1/3.2 Vulkan 1.1, 1.2 OpenCL 1.1,1.2,2.0
NPU	6 int4/int8/int16/FP16/BF16/TF32
RAM	4 64 LPDDR4/LPDDR4x
Storage	32 256 / 128 / 64 (eMMC5.0/ 5.1)
Network	IEEE 802.11a/b/g/n/ac/ax, Wi-Fi6 2.4, 5.8, PCIe v3.0, 2T2R
Display	12, 5.0

Media	<ul style="list-style-type: none"> * MPEG-1, MPEG-2, MPEG-4, H.263, H.264, H.265, VC-1, VP9, VP8, MVC, AV1 * MMU * H.264 AVC/MVC Main10 L6.0: 8K 7680 * VP9 0/2 L6.1: 8K 4320 x 7680 * H.265 HEVC/MVC Main10 L6.1: 8K@60 7680 * AVS2 0/2 L10.2.6: 8K (4320 x 7680) * AV1 8/10 L5.3: 4K x 3840 * MPEG-2 MP: 1080p@60fps (1920x1088) * MPEG-1 MP: 1080p@60fps (1920x1088) * VC-1 AP 3: 1080 1088 x 1920 * VP8 (1088 x 1920) * H.265/H.264 8 @ 30 * HDR 3DNR
Audio	<ul style="list-style-type: none"> I2S 8 * TX 8, RX 8 * 32, 16 * 192 * I2S ((3, 2, 1)) * PCM ((3, 2, 1)) * TDM 2, 1 * I2S, PCM, TDM

IO	2/12
RTC	
BT	
HDMI	<ul style="list-style-type: none"> HDMI 1: HDMI 2.1/7680x4320 60 HDMI 2: HDMI 2.1/4096x2304 60 HDMI: HDMI 2.0/HDMI 1.4b 4K x 2K (3840x 2160p@24 25/4096 30/x2160p@24)
Display	3.5*1

□□□□□□

□□ □□□□

□□ □□ □□ □□□□

□□□□□-C

□ 1000*1:1 □□□□□□ (RGMII)

□ 1000*2:1 □□□□□□

1 * □□ □□□□

2 * (□□□□) 2.0 □□ □□ □□

1 * USB3.0 (□□□□□□)

1 * □□□□□ □□ □□□□□□□□ □□□□□□ C 3.0 (□□□□□□□□ □□□□).



Rockchip RK3588

Next generation Octa-Core processor with high performance AI system-on-module



8K Ultra High Quality

Unlock the potential of 8K video output and 4K video input. Rich details display to let you see the world more clearly.



4K 3840×2160

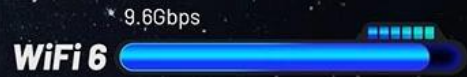


8K 7680×4320



WiFi 6

WiFi6 is faster and has a larger capacity



2T2R 802.11 ax/ac/a/b/g/n



BT 5.0



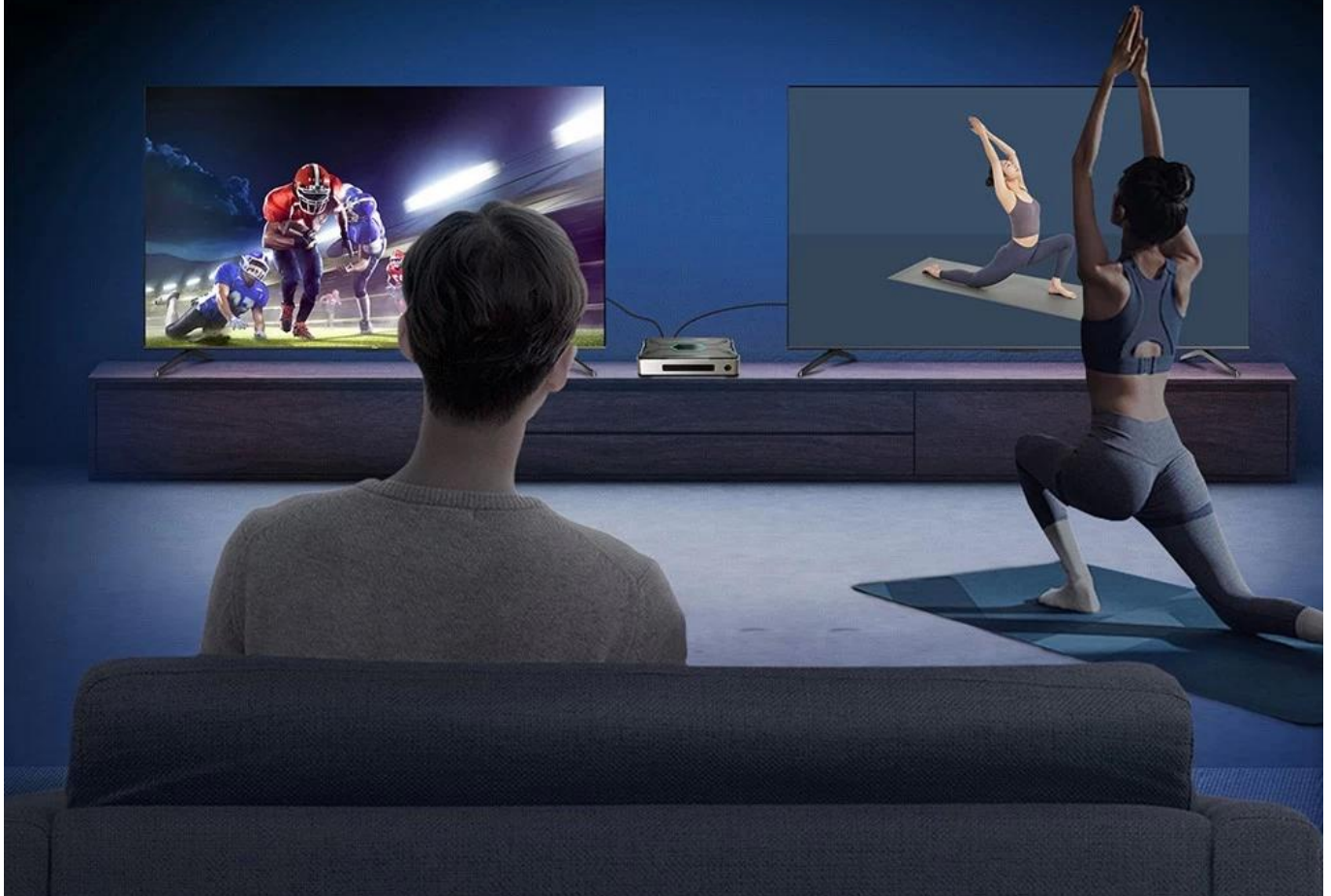
Android 12/Linux Debian11

Compatible with Android and Linux operating systems



Multi-Screen Different Display

Enhance your viewing experience with multi-screen display.
Perfect for immersive, high-definition, multi-screen interactive scenarios.



Large Memory Capacity

Large storage capacity up to 32GB RAM and 128GB ROM, which allows you to install a wide number of applications.

RAM  4G 8G 16G 32G

ROM  16G 32G 64G 128G



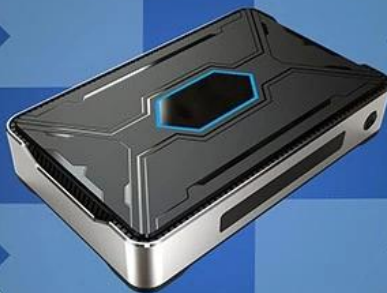
WHAT CAN WE DO?



Watch movies



Working Conference



Teaching



Play games

