

RK3588 4K

Model	RK3588 4K IPTV
Processor	RK3588 8nm Cortex-A76 Cortex-A55
GPU	ARM Mali-G610 MC4 OpenGL ES 1.1/2.0/3.1/3.2 Vulkan 1.1, 1.2 OpenCL 1.1,1.2,2.0 2D
AI Performance	6 TOPS int4/int8/int16/FP16/BF16/TF32
Memory	4GB/8GB LPDDR4/LPDDR4x
Storage	32G/64G/128G/256G eMMC5.0/5.1
Network	IEEE 802.11a/b/g/n/ac/ax
Wireless	Wi-Fi6 2.4GHz/5.8GHz PCIe v3.0
Bluetooth	2T2R
OS	Android 12
Version	5.0

Video Support	<ul style="list-style-type: none"> * MPEG-1, MPEG-2, MPEG-4, H.263, H.264, H.265, VC-1, VP9, VP8 MVC, AV1 * MMU * H.264 AVC/MVC Main10 L6.0 8K@30fps (7680x4320) * VP9 Profile0/2 L6.1 8K@60fps (7680x4320) * H.265 HEVC/MVC Main10 L6.1 8K@60fps (7680x4320) * AVS2 Profile0/2 L10.2.6 8K@60fps (7680x4320) * AV1 8/10bit L5.3 4K@60fps (3840x2160) * MPEG-2 MP 1080p@60fps (1920x1088) * MPEG-1 MP 1080p@60fps (1920x1088) * VC-1 AP 3 1080p@60fps (1920x1088) * VP8 2 1080p@60fps (1920x1088) * H.265/H.264 8K@30fps * 1600 ISP HDR&3DNR I2S 8 * 8 TX 8 RX * 16 32 * 192KHz * 3 I2S * 4 PCM early/late1/late2/late3 * TDM 1/2 1 2 * I2S PCM TDM
---------------	---

Power	DC 12V/2A
BT	BT
HDMI	<ul style="list-style-type: none"> HDMI 1 HDMI 2.1/7680x4320@60Hz HDMI 2 HDMI 2.1/4096x2304@60Hz HDMI HDMI 2.0/HDMI 1.4b 4K x 2K 3840x 2160p@24Hz/25Hz/30Hz 4096x2160p@24Hz
Dimensions	1*3.5mm
Memory	1:1*1000M(RGMII)
Memory	2:1*1000M
TF	1*TF
USB	2*USB 2.0
USB	1*USB3.0
C	1*Type C 3.0



Rockchip RK3588

Next generation Octa-Core processor with high performance AI system-on-module



8K Ultra High Quality

Unlock the potential of 8K video output and 4K video input. Rich details display to let you see the world more clearly.



4K 3840×2160



8K 7680×4320



WiFi 6

WiFi6 is faster and has a larger capacity

WiFi 5 3.5Gbps

WiFi 6 9.6Gbps

2T2R 802.11 ax/ac/a/b/g/n



BT 5.0



Android 12/Linux Debian11

Compatible with Android and Linux operating systems



Multi-Screen Different Display

Enhance your viewing experience with multi-screen display.
Perfect for immersive, high-definition, multi-screen interactive scenarios.



Large Memory Capacity

Large storage capacity up to 32GB RAM and 128GB ROM, which allows you to install a wide number of applications.

RAM



4G

8G

16G

32G

ROM



16G

32G

64G

128G



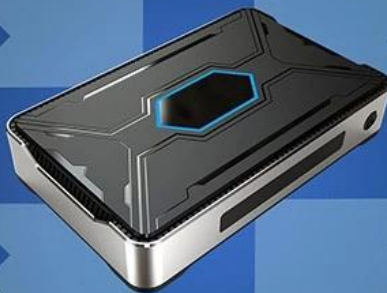
WHAT CAN WE DO?



Watch movies



Working Conference



Teaching



Play games

Interface & Dimension



此款 RK3588 搭载了 4K IPTV 解码器，支持 H.265 和 H.264 格式的视频流。IPTV 解码器支持 4K 分辨率，提供流畅的观看体验。

此外，该设备还支持 4K 分辨率的视频输出，并具备 HDR 功能，确保画面色彩鲜艳、对比度高。IPTV 解码器支持 4K 分辨率，提供流畅的观看体验。

该设备支持 IPTV 解码器，并兼容 Netflix, YouTube, Prime 等主流流媒体平台。此外，还支持 IPTV 解码器，提供流畅的观看体验。

该设备支持 WiFi 功能，提供 2.4GHz 和 5GHz 频段。5GHz 频段支持 4K 分辨率的视频流，确保画面清晰、流畅。

此外，该设备还支持 USB 3.0 接口，提供高速数据传输。USB 接口支持 4K 分辨率的视频流，确保画面清晰、流畅。

该设备搭载了 Rockchip RK3588 处理器，支持 H.265 格式的视频流。此外，还支持 4K 分辨率的视频输出，并具备 HDR 功能。

