

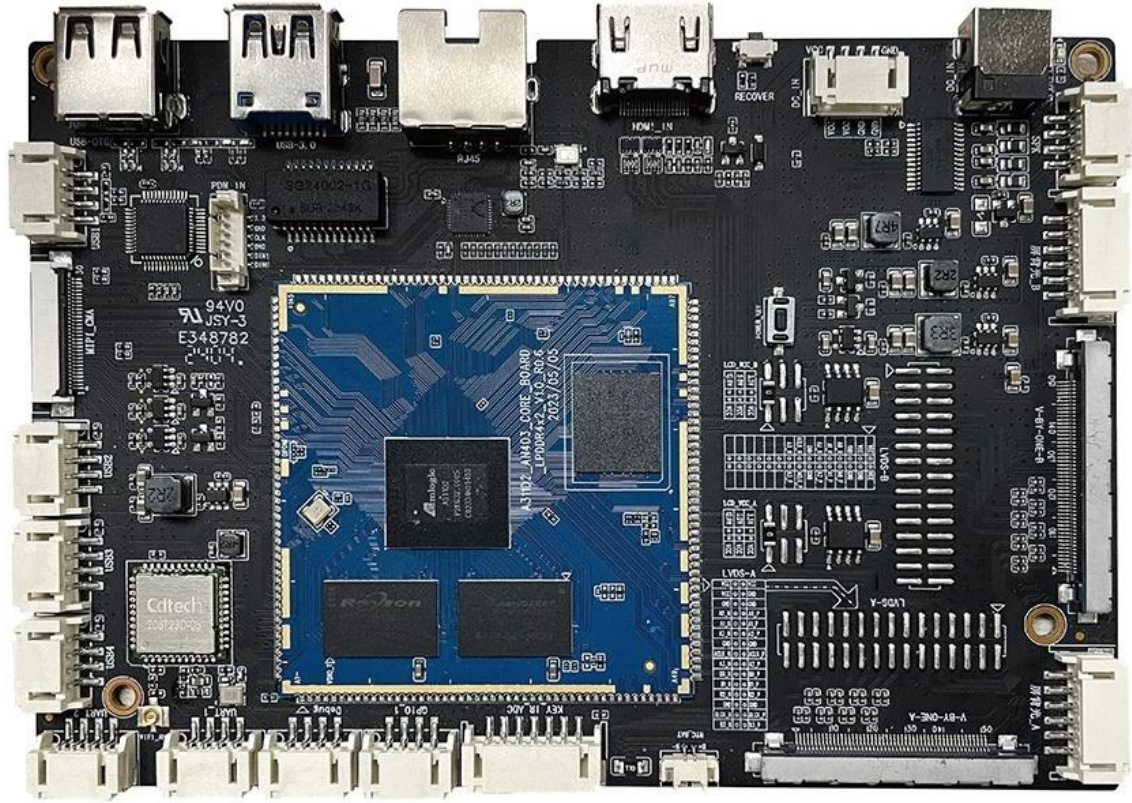
Amlogic Qcta Core A311D2

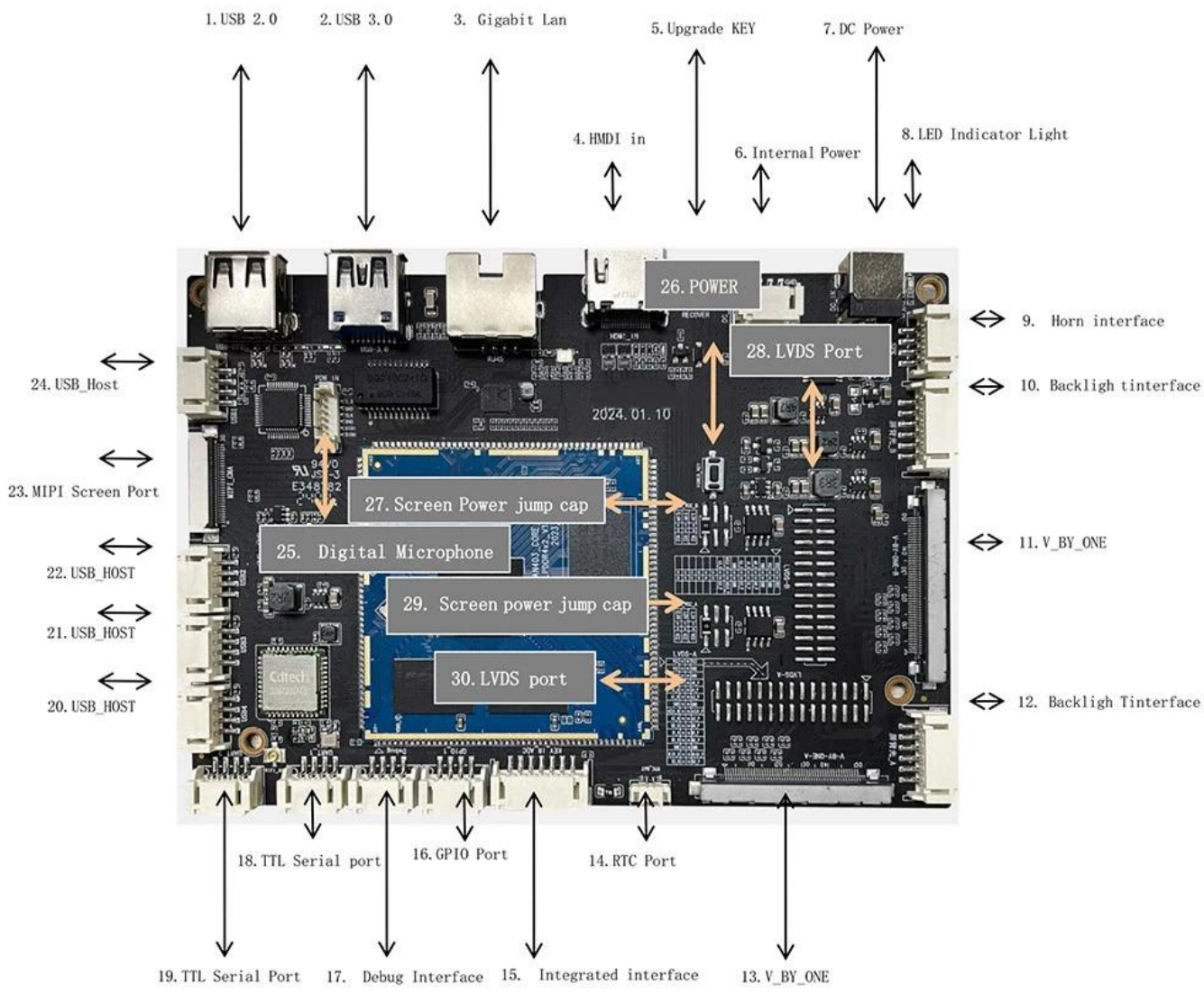
Amlogic A311D2

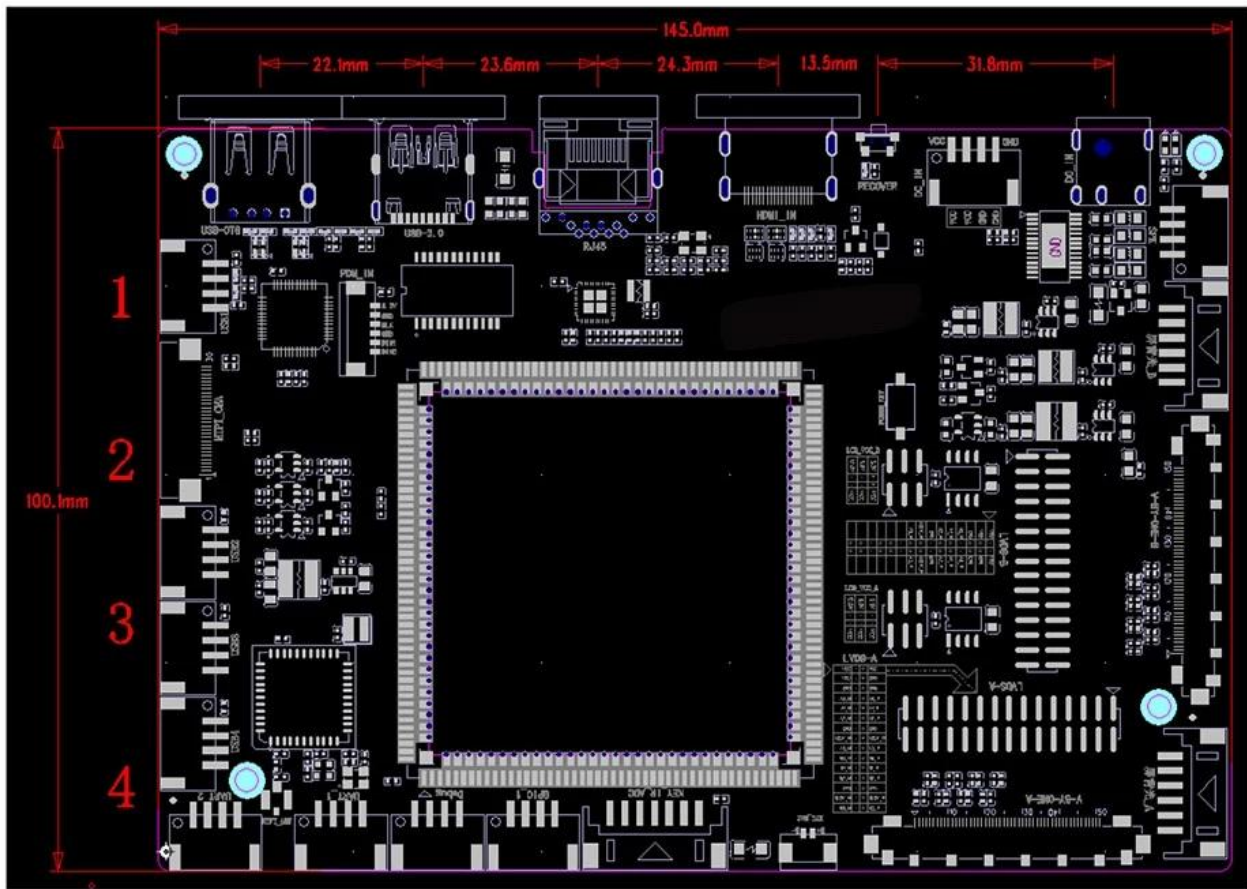
CPU	Amlogic A311D2 ARM Cortex-A73 Cortex-a53 2.0GHz
GPU	ARM Mali-G52 MC4 (2EE) OpenGL ES 3.2 Vulkan 1.1 OpenCL 2.0
RAM	4GB (LPDDR4)
Storage	8GB/16GB/32GB/64GB 128G
Camera	13
Connectivity	2.4G BT5.2

IO/Peripherals

HDMI	HDMI 2.1 3840*2160@60Hz
LVDS A	LCD 1280*800 12V/5V/3.3V
LVDS B	LCD 2560*1600 12V/5V/3.3V
V-BY-ONE A/Bway	LCD 2560*1600 12V/5V/3.3V
Power	8Ω/9W
RTC	
Audio	2* MIC
USB	1* USB OTG 1* USB 3.0 4* USB
UART	2* TTL
DC	2* 12V DC 4PIN_2.0
RTC	1* RTC
Buttons	2* Buttons
Sensors	1* Sensor (1* ADC/LED/IR_IN)
USB	USB
GPIO	145*100







Amlogic A311D2 Android O2O

Amlogic A311D2 ARM cortex-A73 Cortex-a53 12nm GPU ARM Mali-G52 MC4 (2EE) OpenGL ES 3.2 Vulkan 1.1 OpenCL 2.0 Android 13 2.0GHz

- *HDMI LVDS EDP V_BY_ONE 4K 3840x2160
- *1000M WiFi
- *6 USB 1 otg 2.0 1 USB 3.0 4 2 USB GPIO
- *Android API app
- *O2O

