

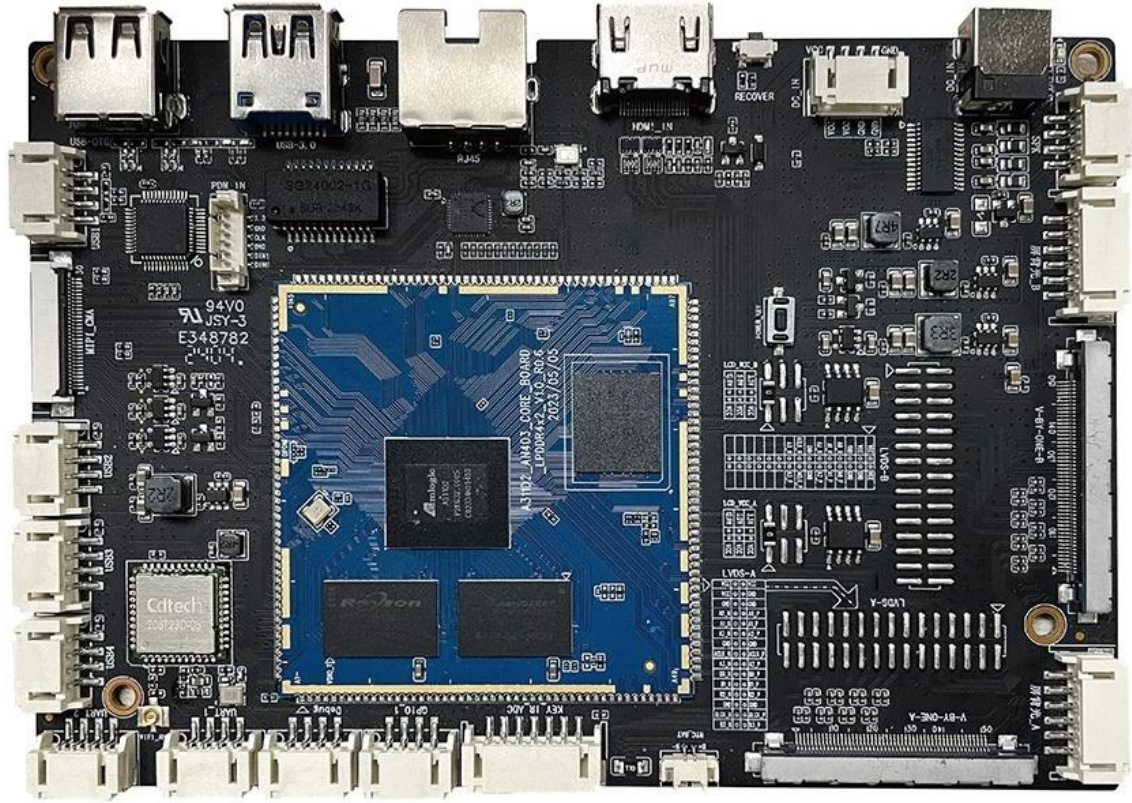
13 4GB 4K

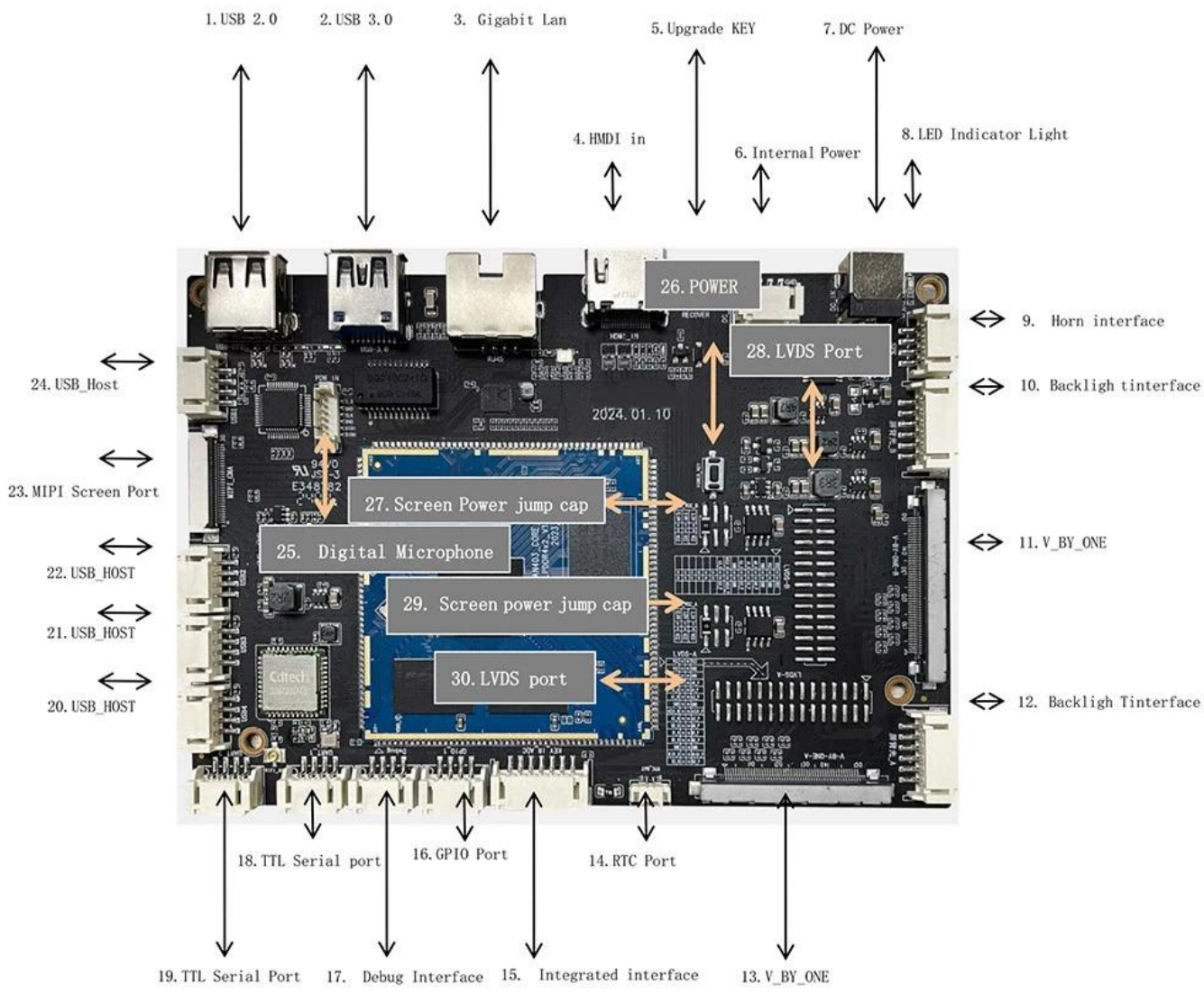
□□

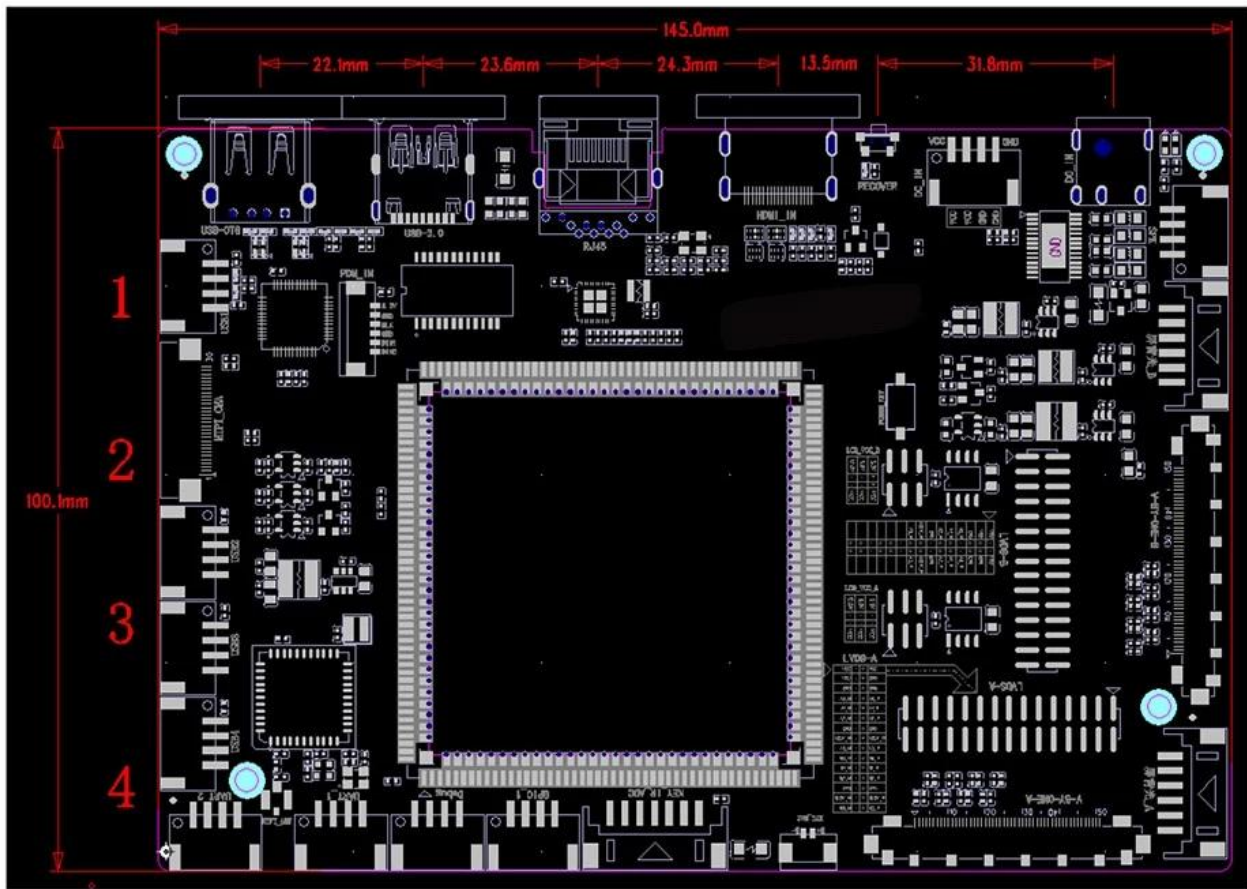
□□ Amlogic A311D2 □□□□□□□□
□□□□ Amlogic A311D2 □□ ARM Cortex-A73 □□ Cortex-a53 □□□□2.0GHz
□□□□ ARM Mali-G52 MC4 (2EE)□OpenGL ES 3.2□Vulkan 1.1 □ OpenCL 2.0
RAM 4GB (LPDDR4)
□□□□ 8GB□16GB/32GB/64GB□□□□128G□
□□□□ Android 13
□□□□/□□ 2.4G□□□□BT5.2

□□/□□□□

HDMI □□ □□HDMI 2.1 3840*2160@60Hz□□
LVDS A □□ □□□□□□□□□□LCD□□□□□□□□1280*800□□□□□□12V/5V/3.3V□
LVDS B □□ □□□□□□□□□□LCD□□□□□□□□2560*1600□□□□□□12V/5V/3.3V□
V-BY-ONE A/Bway □□ □□□□□□□□□□LCD□□□□□□□□2560*1600□□□□□□12V/5V/3.3V□
□□□□ □□□□□□□□8Ω/9W□□
RTC□□□□ □□□□□□/□
2*□□MIC□□
1*USB OTG
1*USB 3.0
4*USB
□□□□ 2*TTL□□□□
2*12V□□□□□□DC□□□4PIN_2.0□□□□□□
1*RTC□□□□
□□□□□□□□□□
2*□□□□
1*□□□□(1*□□/□□□□ 2*ADC□□/LED/IR_IN□□)
□□ □□□□USB□□
□□ 145□□*100□□







Amlogic A311D2 Android O2O

Amlogic A311D2 ARM cortex-A73 Cortex-a53 12nm GPU ARM Mali-G52 MC4 (2EE) OpenGL ES 3.2 Vulkan 1.1 OpenCL 2.0 Android 13 2.0GHz

- *HDMI LVDS EDP V_BY_ONE 4K 3840x2160
- *1000M WiFi
- *6 USB 1 otg 2.0 1 USB 3.0 4 GPIO
- *Android API app
- *O2O

