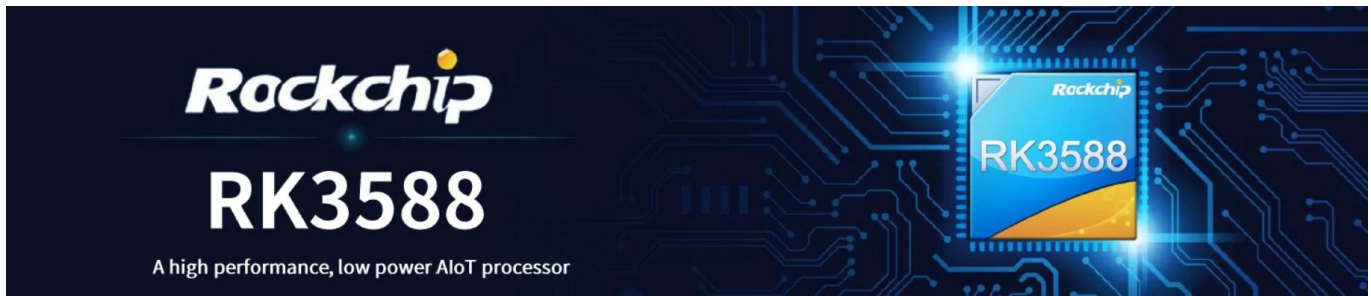


# Rockchip RK3588

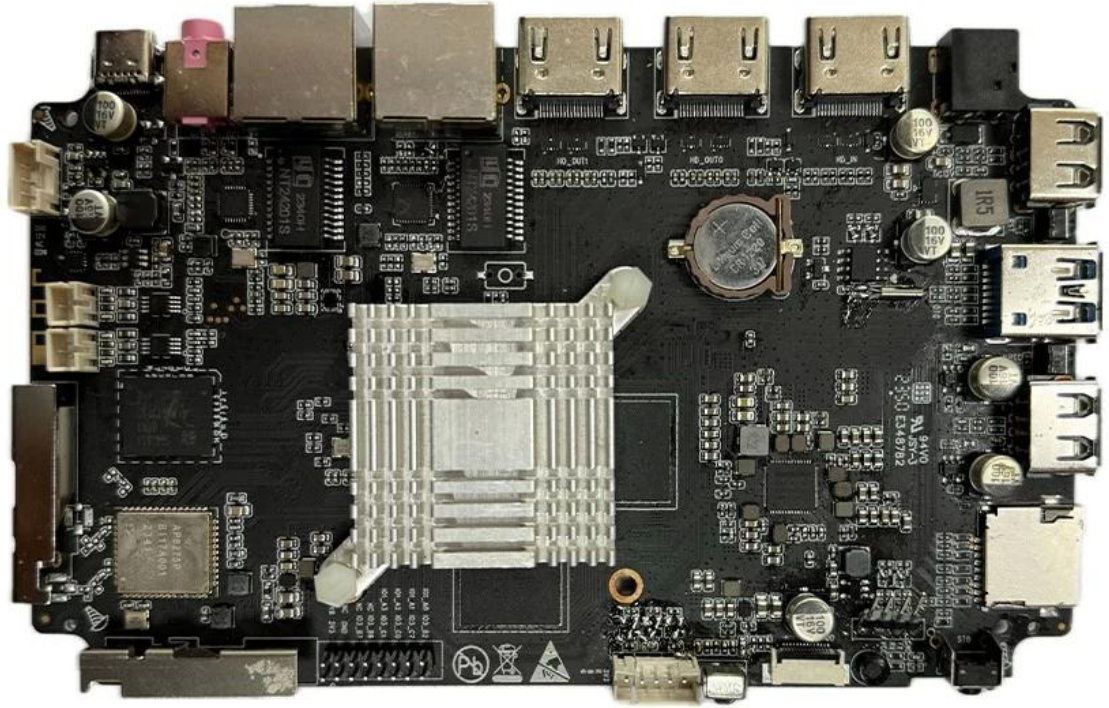


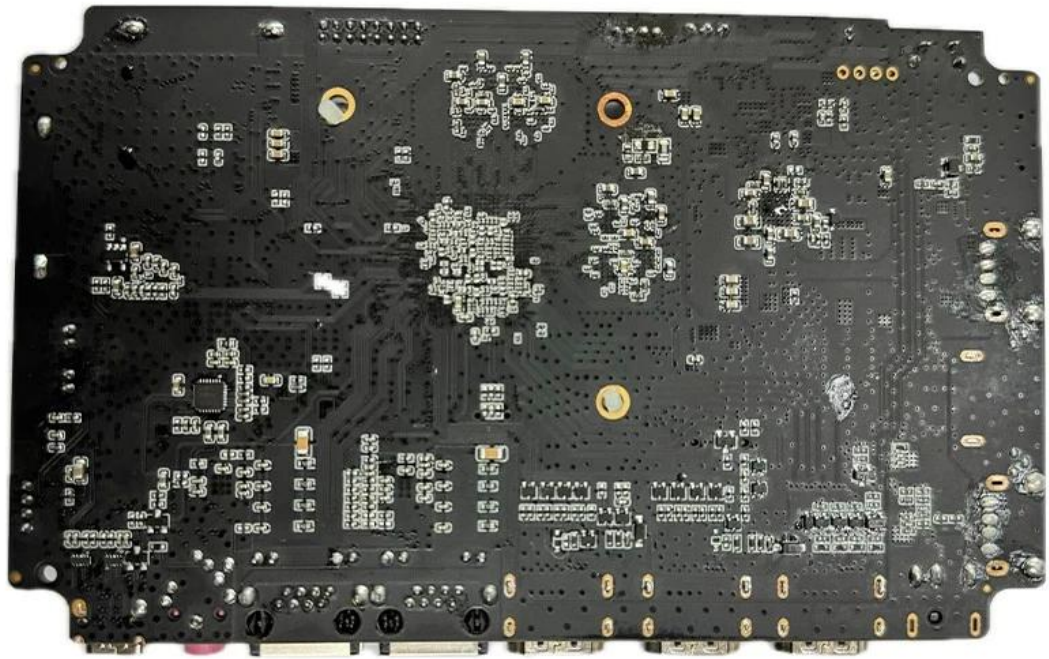
Model	RK3588
Process	8nm
CPU	Cortex-A76 / Cortex-A55
GPU	ARM Mali-G610 MC4, OpenGL ES 1.1/2.0/3.1/3.2, Vulkan 1.1, 1.2, OpenCL 1.1, 1.2, 2.0
AI	6 TOPS (int4/int8/int16/FP16/BF16/TF32)
RAM	4GB/8GB LPDDR4/LPDDR4x
Storage	32G/64G/128G/256G eMMC5.0/5.1
Network	IEEE 802.11a/b/g/n/ac/ax, Wi-Fi6 2.4GHz/5.8GHz, PCIe v3.0
Connectivity	2T2R
OS	Android 12
IO	5.0

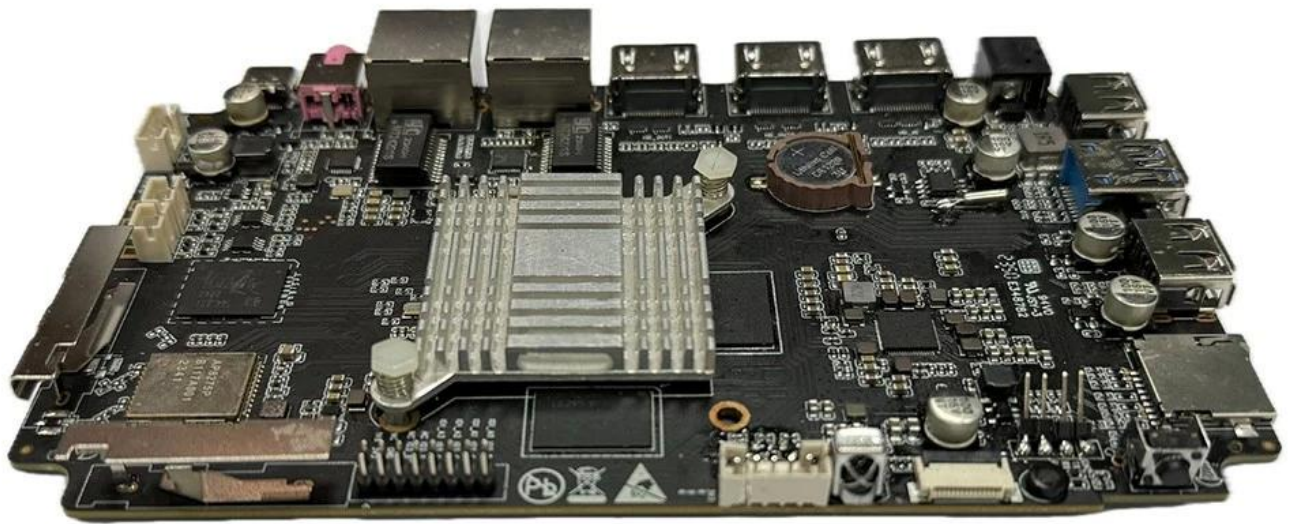
Video	<ul style="list-style-type: none"> <li>* MPEG-1, MPEG-2, MPEG-4, H.263, H.264, H.265, VC-1, VP9, VP8 MVC, AV1</li> <li>* MMU</li> <li>* H.264 AVC/MVC Main10 L6.0@8K@30fps (7680x4320)</li> <li>* VP9 Profile0/2 L6.1@8K@60fps (7680x4320)</li> <li>* H.265 HEVC/MVC Main10 L6.1@8K@60fps (7680x4320)</li> <li>* AVS2 Profile0/2 L10.2.6@8K@60fps (7680x4320)</li> <li>* AV1 8/10bit L5.3@4K@60fps (3840x2160)</li> <li>* MPEG-2 MP@1080p@60fps (1920x1088)</li> <li>* MPEG-1 MP@1080p@60fps (1920x1088)</li> <li>* VC-1 AP 3@1080p@60fps (1920x1088)</li> <li>* VP8 @2@1080p@60fps (1920x1088)</li> </ul>
Image	<ul style="list-style-type: none"> <li>* H.265/H.264</li> <li>* @8K@30fps</li> <li>* 1600 ISP HDR&amp;3DNR</li> <li>I2S0 8</li> <li>* 8 TX 8 RX</li> <li>* 16 32</li> <li>* 192KHz</li> <li>* 3 I2S</li> <li>* 4 PCM early/late1/late2/late3</li> <li>* TDM 1/2</li> <li>* I2S PCM TDM</li> </ul>

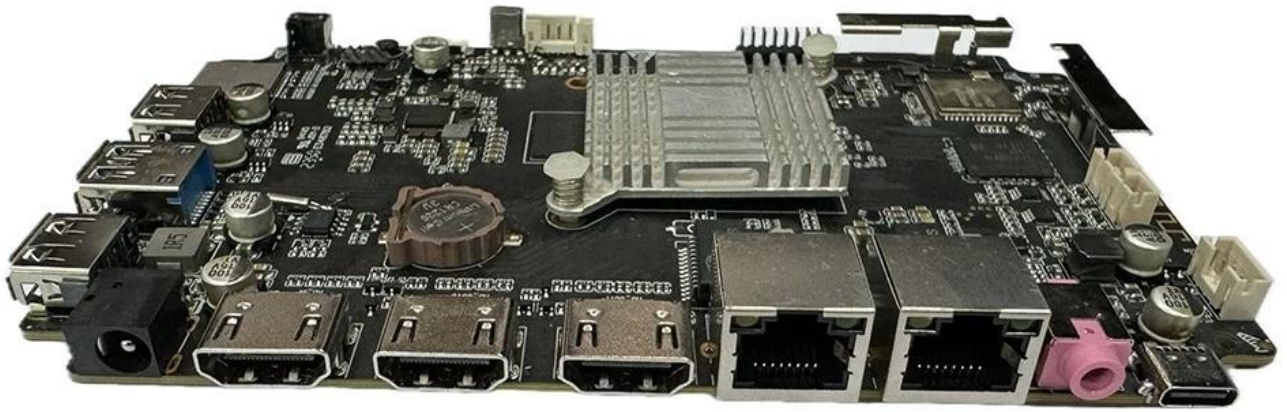
Power	DC 12V/2A
Other	
Connectivity	BT

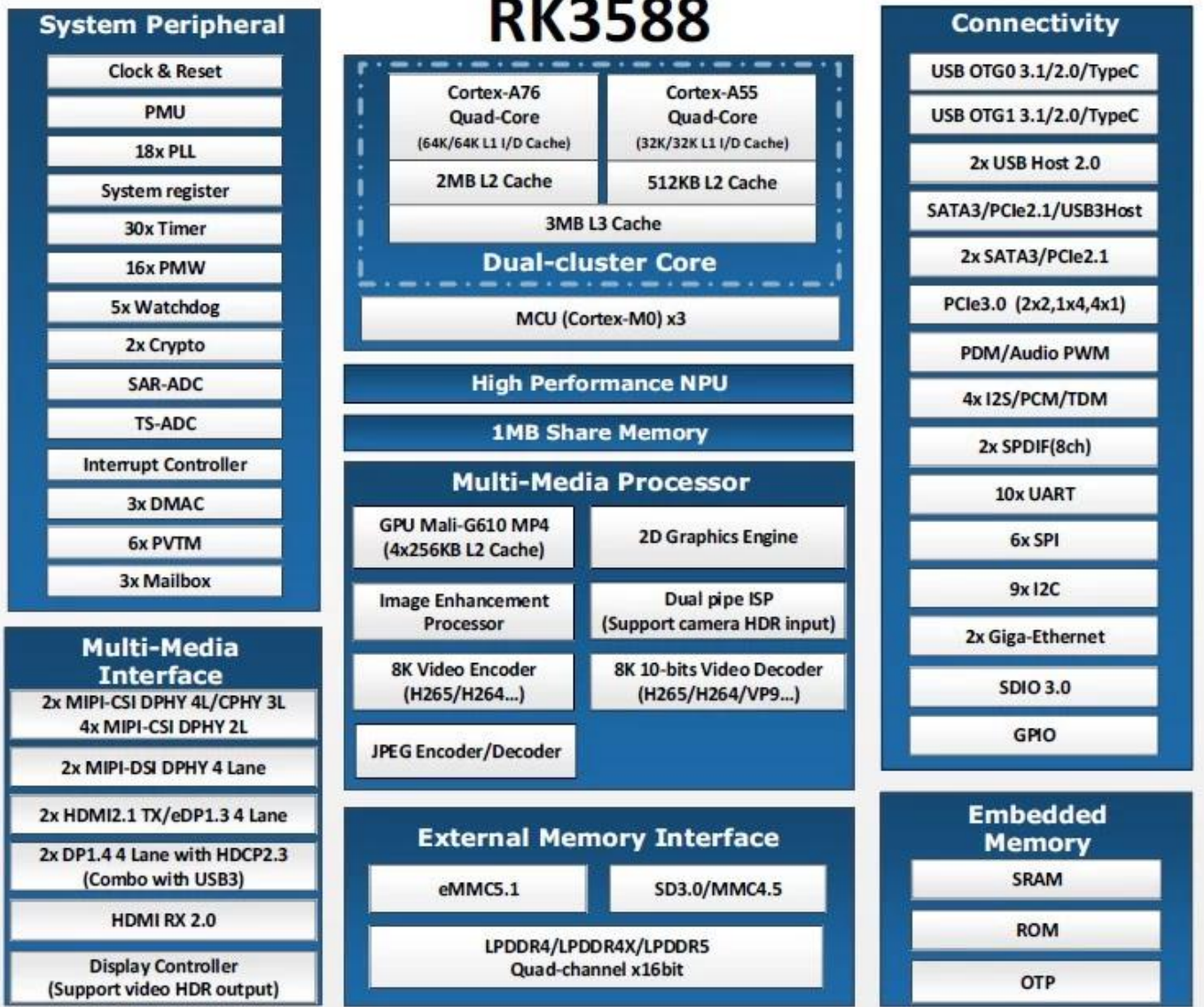
HDMI	HDMI 1 HDMI 2.1/7680x4320@60Hz HDMI 2 HDMI 2.1/4096x2304@60Hz HDMI 3 HDMI 2.0/HDMI 1.4b 4K x 2K 3840x 2160p@24Hz/25Hz/30Hz 4096x2160p@24Hz
□□	1*3.5mm
□□□	□□□1:1*1000M(RGMII) □□□2*1*1000M
TF□	1*TF
USB□□	2*USB 2.0 1*USB3.0
C□	1*Type C 3.0











## Typical Application Diagram – AIoT



