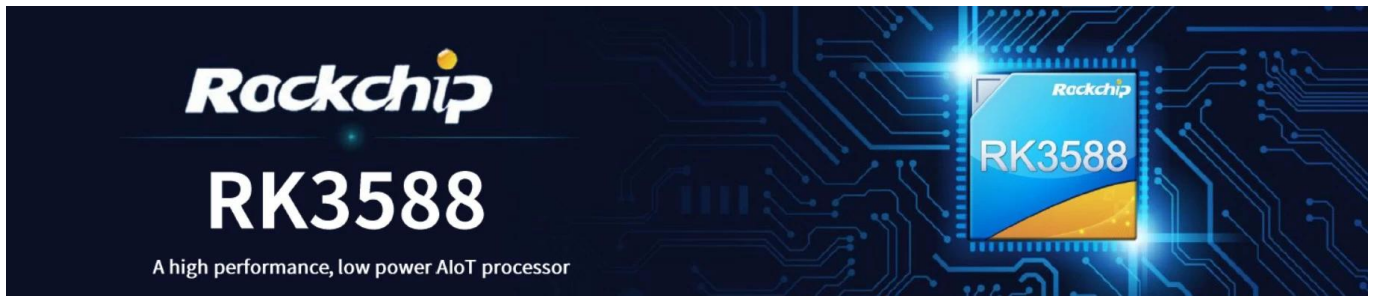


# RK3588 8nm Cortex-A76 Cortex-A55 8K 2D/3D

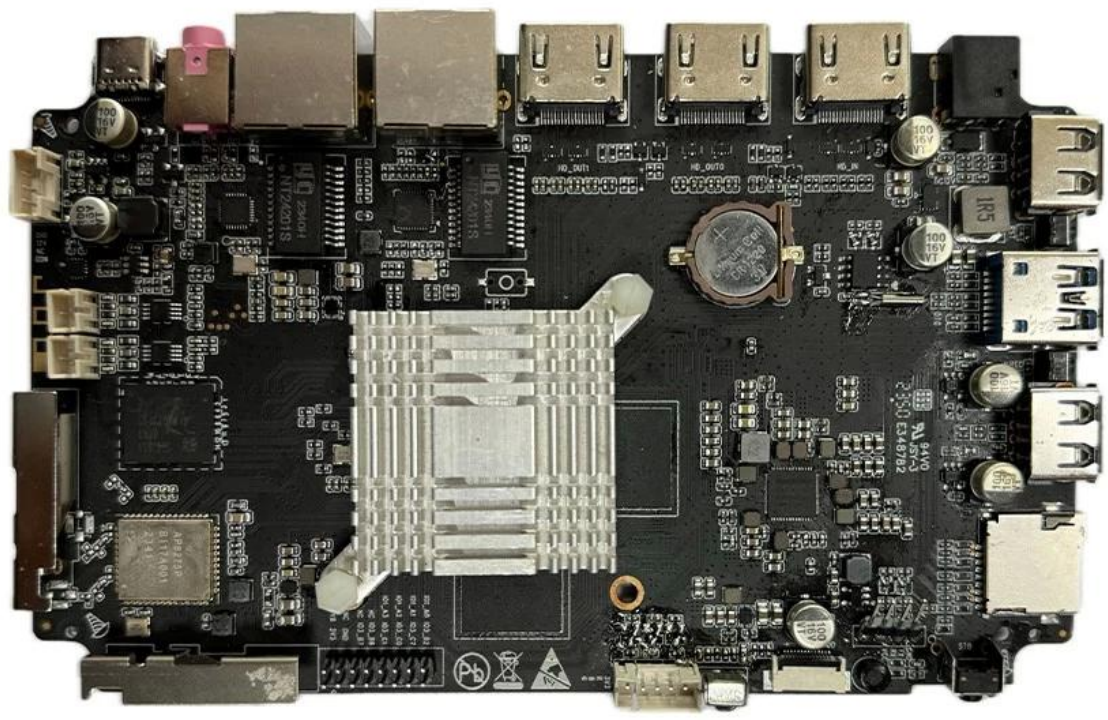


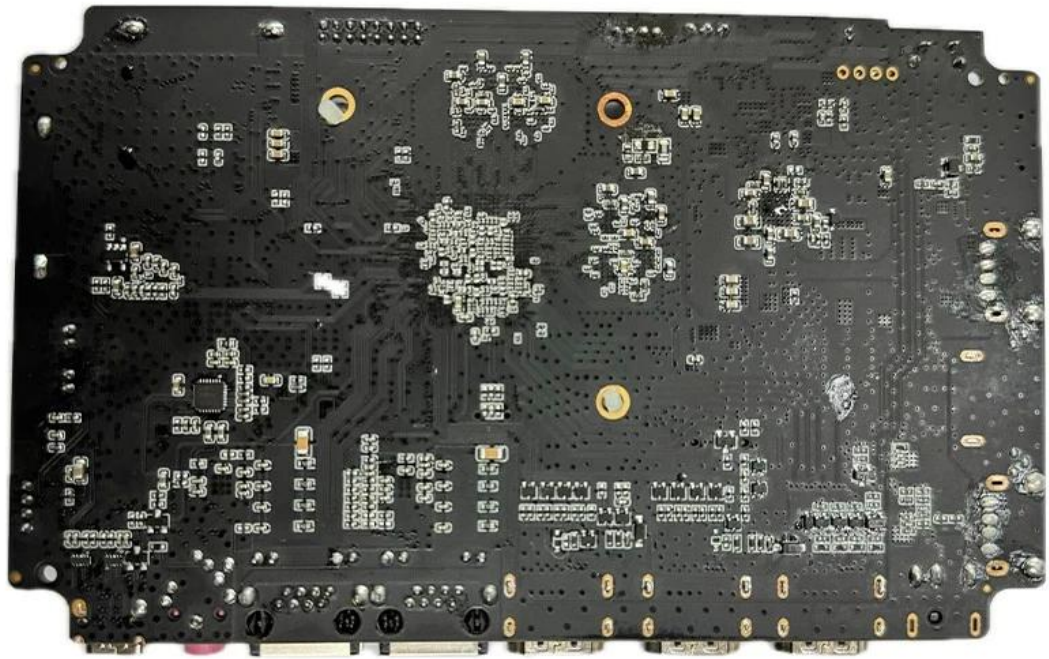
型號	RK3588
制程	8nm
CPU	Cortex-A76 Cortex-A55
GPU	ARM Mali-G610 MC4 OpenGL ES 1.1/2.0/3.1/3.2 Vulkan 1.1, 1.2 OpenCL 1.1,1.2,2.0 2D/3D
AI算力	6 TOPS int4/int8/int16/FP16/BF16/TF32
內存	4GB/8GB LPDDR4/LPDDR4x
儲存	32G/64G/128G/256G eMMC5.0/5.1
無線	IEEE 802.11a/b/g/n/ac/ax
網路	Wi-Fi6 2.4GHz/5.8GHz PCIe v3.0
接口	2T2R
系統	Android 12
其他	5.0

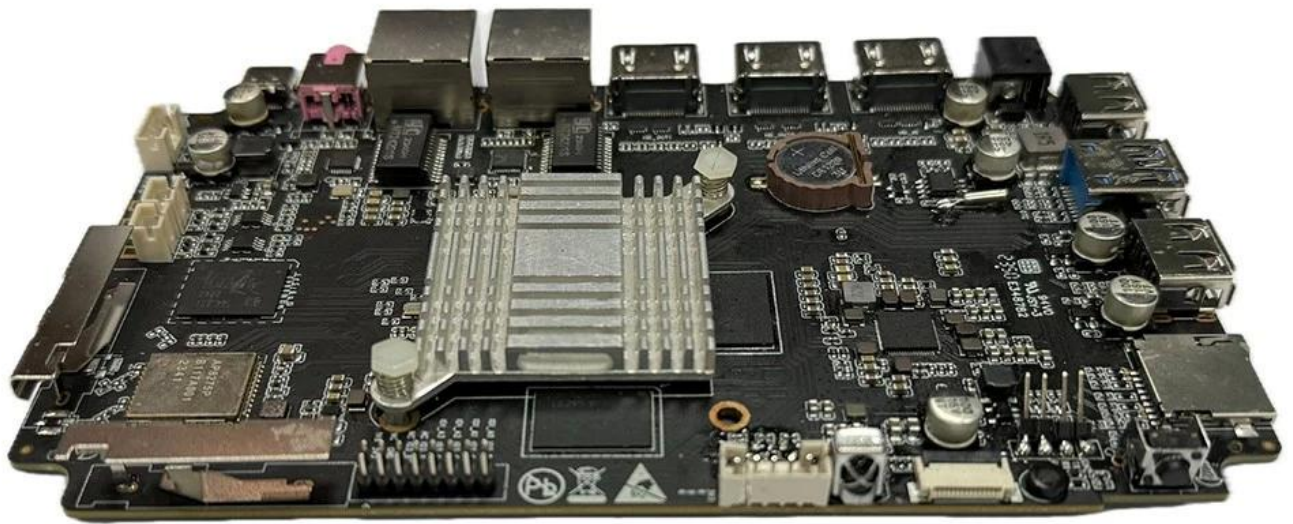
編碼器	<ul style="list-style-type: none"> <li>* MPEG-1, MPEG-2, MPEG-4, H.263, H.264, H.265, VC-1, VP9, VP8 MVC, AV1</li> <li>* MMU</li> <li>* H.264 AVC/MVC Main10 L6.0 8K@30fps (7680x4320)</li> <li>* VP9 Profile0/2 L6.1 8K@60fps (7680x4320)</li> <li>* H.265 HEVC/MVC Main10 L6.1 8K@60fps (7680x4320)</li> <li>* AVS2 Profile0/2 L10.2.6 8K@60fps (7680x4320)</li> <li>* AV1 8/10bit L5.3 4K@60fps (3840x2160)</li> </ul>
解碼器	<ul style="list-style-type: none"> <li>* MPEG-2 MP 1080p@60fps (1920x1088)</li> <li>* MPEG-1 MP 1080p@60fps (1920x1088)</li> <li>* VC-1 AP 3 1080p@60fps (1920x1088)</li> <li>* VP8 2 1080p@60fps (1920x1088)</li> <li>* H.265/H.264 8K@30fps</li> <li>* 1600 ISP HDR&amp;3DNR</li> </ul>
音頻	<ul style="list-style-type: none"> <li>I2S0 8</li> <li>* 8 TX 8 RX</li> <li>* 16 32</li> <li>* 192KHz</li> <li>* 3 I2S</li> <li>* 4 PCM early/late1/late2/late3</li> <li>* TDM 1/2 1 2</li> <li>* I2S PCM TDM</li> </ul>

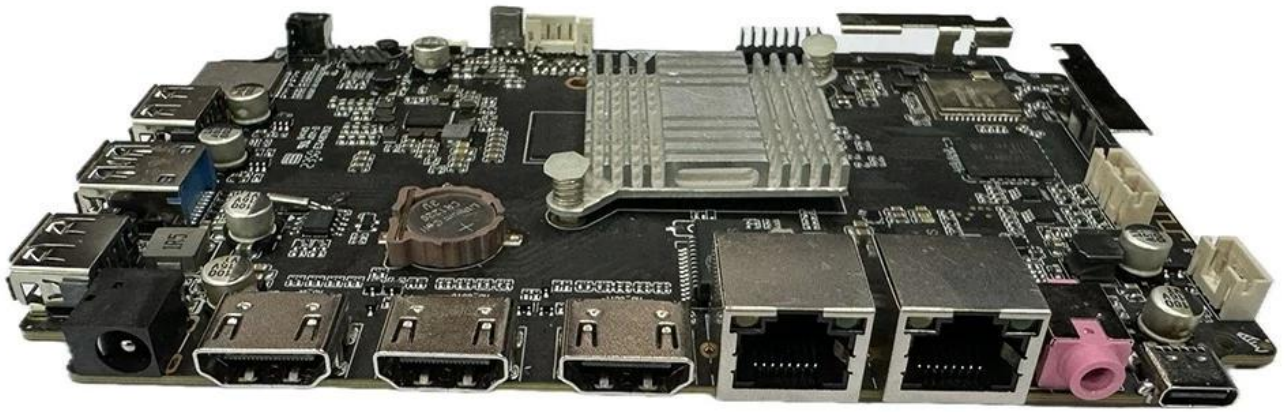
電壓/電流	DC 12V/2A
其他	
接口	BT

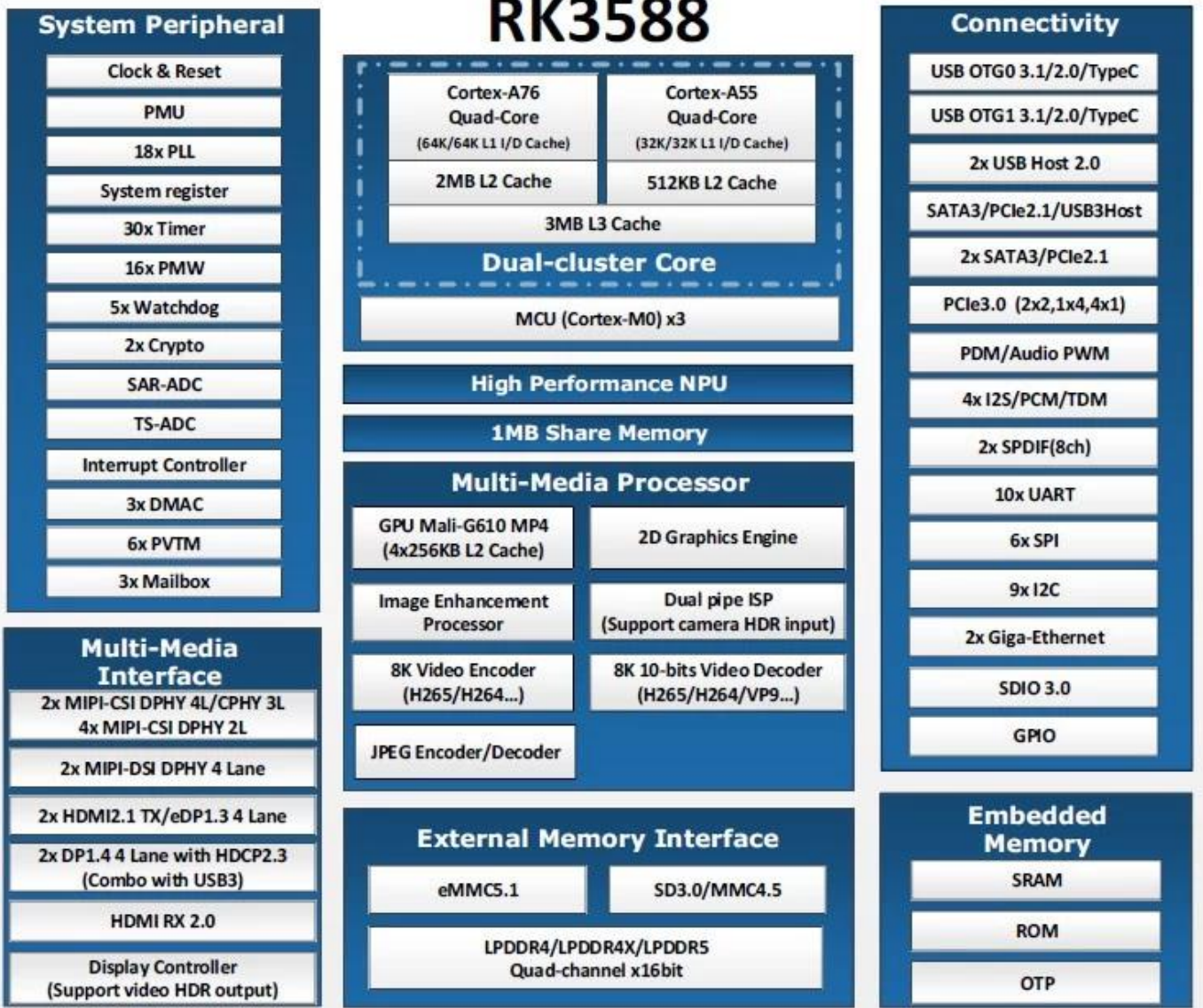
HDMI	HDMI 1 HDMI 2.1/7680x4320@60Hz
	HDMI 2 HDMI 2.1/4096x2304@60Hz
	HDMI 3 HDMI 2.0/HDMI 1.4b 4K x 2K 3840x 2160p@24Hz/25Hz/30Hz
	4096x2160p@24Hz
	1*3.5mm
	1*1000M(RGMII)
	2*1000M
TF	1*TF
USB	2*USB 2.0
	1*USB3.0
C	1*Type C 3.0











## Typical Application Diagram – AIoT





RK3588 Android 12 8K RK3588

RK3588 4GB RAM 16GB

**Android 12**

RK3588 Android 12 Android 12 Google Play Android 12

**8K**

RK3588 8K 8K RK3588 RK3588

**WiFi 6**

RK3588 WiFi 6 8K WiFi 6

**USB**

RK3588 USB HDMI 2.1

**WiFi 6**

RK3588 8K WiFi 6 Android 12 RK3588