

Rockchip RK3588 Android 12

Processor	Rockchip RK3588
CPU	Rockchip RK3588 8nm Cortex-A76 Cortex-A55
GPU	ARM Mali-G610 MC4 OpenGL ES 1.1/2.0/3.1/3.2 Vulkan 1.1, 1.2 OpenCL 1.1,1.2,2.0
AI	2D/3D
AIOPS	6 TOPS int4/int8/int16/FP16/BF16/TF32
RAM	4GB/8GB LPDDR4/LPDDR4x
Storage	32G/64G/128G/256G eMMC5.0/5.1
Network	IEEE 802.11a/b/g/n/ac/ax
Wireless	Wi-Fi6 2.4GHz/5.8GHz PCIe v3.0
Bluetooth	2T2R
OS	Android 12
Version	5.0

Video	<ul style="list-style-type: none"> * MPEG-1, MPEG-2, MPEG-4, H.263, H.264, H.265, VC-1, VP9, VP8 MVC, AV1 * MMU * H.264 AVC/MVC Main10 L6.0 8K@30fps (7680x4320) * VP9 Profile0/2 L6.1 8K@60fps (7680x4320) * H.265 HEVC/MVC Main10 L6.1 8K@60fps (7680x4320) * AVS2 Profile0/2 L10.2.6 8K@60fps (7680x4320) * AV1 8/10bit L5.3 4K@60fps (3840x2160) * MPEG-2 MP 1080p@60fps (1920x1088) * MPEG-1 MP 1080p@60fps (1920x1088) * VC-1 AP 3 1080p@60fps (1920x1088) * VP8 2 1080p@60fps (1920x1088) * H.265/H.264 8K@30fps * 1600 ISP HDR&3DNR I2S0 8 * 8 TX 8 RX * 16 32 * 192KHz * 3 I2S * 4 PCM early/late1/late2/late3 * TDM 1/2 1 2 * I2S PCM TDM
Audio	<ul style="list-style-type: none"> I2S0 8 * 8 TX 8 RX * 16 32 * 192KHz * 3 I2S * 4 PCM early/late1/late2/late3 * TDM 1/2 1 2 * I2S PCM TDM

Power	DC 12V/2A
BT	BT
HDMI	<ul style="list-style-type: none"> HDMI 1 HDMI 2.1/7680x4320@60Hz HDMI 2 HDMI 2.1/4096x2304@60Hz HDMI 3 HDMI 2.0/HDMI 1.4b 4K x 2K 3840x 2160p@24Hz/25Hz/30Hz 4096x2160p@24Hz
Size	1*3.5mm
Memory	1:1*1000M(RGMII)
TF	2:2*1*1000M
USB	1*TF
USB	2*USB 2.0
C	1*USB3.0
C	1*Type C 3.0



Rockchip RK3588

Next generation Octa-Core processor with high performance AI system-on-module



8K Ultra High Quality

Unlock the potential of 8K video output and 4K video input. Rich details display to let you see the world more clearly.



4K 3840×2160



8K 7680×4320



WiFi 6

WiFi6 is faster and has a larger capacity

WiFi 5 3.5Gbps

WiFi 6 9.6Gbps

2T2R 802.11 ax/ac/a/b/g/n



BT 5.0



Android 12/Linux Debian11

Compatible with Android and Linux operating systems



Multi-Screen Different Display

Enhance your viewing experience with multi-screen display.
Perfect for immersive, high-definition, multi-screen interactive scenarios.



Large Memory Capacity

Large storage capacity up to 32GB RAM and 128GB ROM, which allows you to install a wide number of applications.

RAM



4G

8G

16G

32G

ROM



16G

32G

64G

128G



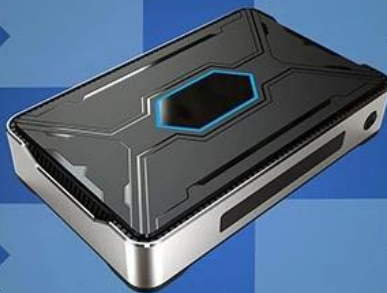
WHAT CAN WE DO?



Watch movies



Working Conference



Teaching



Play games

Interface & Dimension



1. 搭载 Rockchip RK3588 芯片，支持 Android 12 系统，性能卓越，运行流畅。

核心配置 RK3588

搭载 Rockchip RK3588 芯片，支持 8K 视频播放，CPU 性能强劲。

8K 视频播放

支持 8K 视频播放，8K 分辨率，4K 帧率，画质清晰。RK3588 芯片 GPU 性能强大。

Android 12 特色

Android 12 提供許多新特性，包括 Google Play 商店、Netflix 及 Hulu 等應用程式，Android 12 提供許多新特性。

WiFi 6 特色

WiFi 6 提供許多新特性，包括 WiFi 6 提供許多新特性，8K 提供許多新特性，WiFi 6 提供許多新特性。

特色

Rockchip RK3588 提供許多新特性，包括 USB 及 HDMI 提供許多新特性，Rockchip RK3588 提供許多新特性。

特色

Rockchip RK3588 Android 12 提供許多新特性，8K 提供許多新特性，Rockchip RK3588 提供許多新特性。