

RK3588 4K IPTV

概述

| | |
|------|--|
| 型号 | RK3588 4K IPTV |
| CPU | RK3588 8nm 双核 Cortex-A76 双核 Cortex-A55 |
| GPU | ARM Mali-G610 MC4 OpenGL ES 1.1/2.0/3.1/3.2 Vulkan 1.1, 1.2 OpenCL 1.1,1.2,2.0 2D 3D |
| NPU | 6 TOPS(int4/int8/int16/FP16/BF16/TF32) |
| 内存 | 4GB/8GB(64bit LPDDR4/LPDDR4x) |
| 存储 | 32G/64G/128G/256G(eMMC5.0/5.1) |
| WiFi | IEEE 802.11a/b/g/n/ac/ax Wi-Fi6 2.4GHz/5.8GHz(PCIe v3.0) 2T2R |
| 操作系统 | Android 12 |
| 其他 | 5.0 |

功能特性

| | |
|------|---|
| 视频解码 | * MPEG-1,MPEG-2,MPEG-4,H.263,H.264,H.265,VC-1,VP9,VP8 MVC,AV1 |
| 视频编码 | * MMU * H.264 AVC/MVC L6.0: 8K@30fps(7680x4320) * VP9 L6.0/2 L6.1: 8K@60fps(7680x4320) * H.265 HEVC/MVC Main10 L6.1: 8K@60fps(7680x4320) * AVS2 Profile0/2 L10.2.6: 8K@60fps(7680x4320) * AV1 8/10 L5.3: 4K@60fps(3840x2160) |
| 音频 | * MPEG-2 MP: 1080p@60fps(1920x1088) * MPEG-1 MP: 1080p@60fps(1920x1088) * VC-1 AP 3: 1080p@60fps(1920x1088) * VP8 2: 1080p@60fps(1920x1088) |
| 其他 | * H.265/H.264 8K@30fps * HDR 3DNR 16M ISP 8 I2S * 8 TX 8 RX * 16 32 * 192KHz * 3 I2S (0, 1, 2) * 4 PCM (0, 1, 2, 3) * TDM 1/2, 1, 2, 3 * I2S, PCM TDM |

I/O

| | |
|------|---|
| 电源 | DC 12V/2A |
| RTC | |
| IR | BT |
| HDMI | HDMI 1:HDMI 2.1/7680x4320@60Hz HDMI 2:HDMI 2.1/4096x2304@60Hz HDMI IN:HDMI 2.0/HDMI 1.4b 4K x 2K (3840x 2160p@24Hz/25Hz/30Hz) |
| 接口 | 1*3.5mm |
| 接口 | 1:1*1000M(RGMII) 2:1*1000M |
| TF | 1*TF |
| USB | 2*USB 2.0 1*USB3.0 |
| C | 1*C 3.0 |



Rockchip RK3588

Next generation Octa-Core processor with high performance AI system-on-module



8K Ultra High Quality

Unlock the potential of 8K video output and 4K video input. Rich details display to let you see the world more clearly.



4K 3840×2160



8K 7680×4320



WiFi 6

WiFi6 is faster and has a larger capacity

WiFi 5 3.5Gbps

WiFi 6 9.6Gbps

2T2R 802.11 ax/ac/a/b/g/n



BT 5.0



Android 12/Linux Debian11

Compatible with Android and Linux operating systems



Multi-Screen Different Display

Enhance your viewing experience with multi-screen display.
Perfect for immersive, high-definition, multi-screen interactive scenarios.



Large Memory Capacity

Large storage capacity up to 32GB RAM and 128GB ROM, which allows you to install a wide number of applications.

RAM



4G

8G

16G

32G

ROM



16G

32G

64G

128G



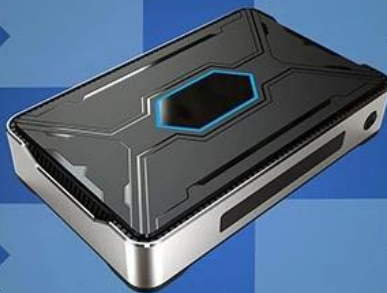
WHAT CAN WE DO?



Watch movies



Working Conference



Teaching



Play games

Interface & Dimension



此款 RK3588 是一款高性能的 4K IPTV 播放器，支持多种视频格式，IPTV 播放，支持多种语言，支持多种字幕，支持多种音效。此款 RK3588，支持 4K 播放，支持 HDR，支持多种视频格式，支持多种语言，支持多种字幕，支持多种音效。

此款 RK3588 支持 HD 4K 播放，支持 HDR，支持多种视频格式，支持多种语言，支持多种字幕，支持多种音效。此款 RK3588，支持 4K UHD 播放，支持 HD 播放，支持 4K 播放，支持 HDR，支持多种视频格式，支持多种语言，支持多种字幕，支持多种音效。

此款 RK3588 支持 Rockchip RK3588 芯片，支持 IPTV 播放，支持多种视频格式，支持多种语言，支持多种字幕，支持多种音效。此款 RK3588，支持 4K 播放，支持 HDR，支持多种视频格式，支持多种语言，支持多种字幕，支持多种音效。

此款 RK3588 支持 WiFi 播放，支持 2.4GHz 和 5GHz 频段，支持多种视频格式，支持多种语言，支持多种字幕，支持多种音效。此款 RK3588，支持 4K 播放，支持 HDR，支持多种视频格式，支持多种语言，支持多种字幕，支持多种音效。

It supports various ports and protocols. It features **USB 3.0** ports for high-speed data transfer, USB storage, and USB networking. Additionally, it supports various protocols, including Ethernet, Wi-Fi, and Bluetooth, providing flexible connectivity options.

It features **Rockchip RK3588** processor, supporting **H.265** video decoding, and offers high-resolution video output up to 4K. It also supports various protocols, including Ethernet, Wi-Fi, and Bluetooth, providing flexible connectivity options.

It features **Android** operating system, offering a rich user interface and a wide range of applications. It also supports various protocols, including Ethernet, Wi-Fi, and Bluetooth, providing flexible connectivity options. **HDMI** ports are available for high-quality video and audio output.

It features a powerful **CPU** and a large amount of memory, ensuring smooth performance and fast data processing. It also supports various protocols, including Ethernet, Wi-Fi, and Bluetooth, providing flexible connectivity options.

It features **4K IPTV** support, allowing for high-quality streaming. It also features **Rockchip RK3588** processor, supporting **4K UHD** video output, and offers high-resolution video output up to 4K. It also supports various protocols, including Ethernet, Wi-Fi, and Bluetooth, providing flexible connectivity options.