

Amlogic S905 TV BOX ARM Cortex-A53 CPU 2.0GHz Android 5.1 Lollipop 1G/8G 4K2K Android TV BOX S9

S9

Amlogic S905 Quad Core S9

New! Amlogic S905 Quad Core ARM Cortex™-A53 CPU
up to 2.0 GHz, 1GB/8GB H.265 4K2K Android 5.1 TV Box!

S905

1GB
8GB

DLNA
CERTIFIED

H.265
HEVC

4k2k

Android 5.1

FULL HD
1080P



□□□□ □□	
□□ □□.	S9
CPU	Amlogic S905 □□ □□ ARM Cortex™ -A53 CPU □□ 2.0GHz(DVFS)
GPU	□□ □□ Mali-450 □□ 750Mhz
□□□	8GB
DDR3	1GB DDR3
□□	□□□□: □□□
□ www.sztomato.com	
□□□□□□	DC 5V/2A
□□ □□□(LED)	LED □□□□, □□ □: □□□□, □□: □□□□ □□ □□: <0.5W
□□□□□□	
□□□□	Android™ 5.1 □□□
□□□	H.265 HEVC MP-10@L5.1 □□ 4Kx2K@60fps
	H.264 AVC HP™@L5.1 □□ 4Kx2K@30fps
	H.264 MVC □□ 1080P@60fps
	MPEG-4 ASP@L5 □□ 1080P@60fps(ISO-14496)
	WMV/VC-1 SP/MP/AP □□ 1080P@60fps
	AVS-P16(AVS) /AVS-P2 □□□□ □□ 1080P@60fps
	MPEG-2 MP/HL □□ 1080P@60fps(ISO-13818)
	MPEG-1 MP/HL □□ 1080P@60fps(ISO-11172)
	RealVideo 8/9/10 □□ 1080P
	WebM(□□ VGA)
	□□ □□ □ □□ □□ □□ □□ □□
	MJPEG □ JPEG □□□□ □□ □□□□ (ISO/IEC-10918)
JPEG □□□□, □□ □□, □□ □ □□ □□ □□	
.mkv,.wmv,*.mpg, *.mpeg, *.dat, *.avi, *.mov, *.iso, *.mp4, *.rm □ *.jpg □□ □□ □□	
□□□	DSP □□□□ □□ □□□□ □□ □□□□ MediaCPU
	MP3, AAC, WMA, RM, FLAC, Ogg □ 5.1 □□□□□□ □□□□□□ □□ □□
	□□□ SPDIF/IEC958 □ PCM □□ □□□ □□□ □□/□□
□□	HD JPEG, BMP, GIF, PNG, TIF
□□ □□	□□□□, □□, □□, □□□□, □□ □ □□□
□□□□ www.sztomato.com	
1*HDMI™	4K*2K UHD □□, HDMI™ 2.0
1*AV □□	480i/576i □□ □□ □□

3*USB	2*USB 3.0 接口, 1*USB 2.0 接口
1*天线	内置天线
1*RJ45	千兆以太网接口, 1000M LAN
1*SD™/MMC 接口	4GB/8GB/16GB/32GB/64GB 存储卡
功能	
网络	支持 Netflix, Hulu, Flixster, Youtube 等流媒体服务。
应用	支持 Amazon™ 等应用商店下载应用。
存储	支持 HDD, U 盘, SD™/MMC 存储卡。
网络应用	支持 SKYPE 网络电话, MSN, 微信, QQ 网络聊天。
其他	支持 DLNA 网络共享 2.4G 无线局域网



Picture Show



Indicator



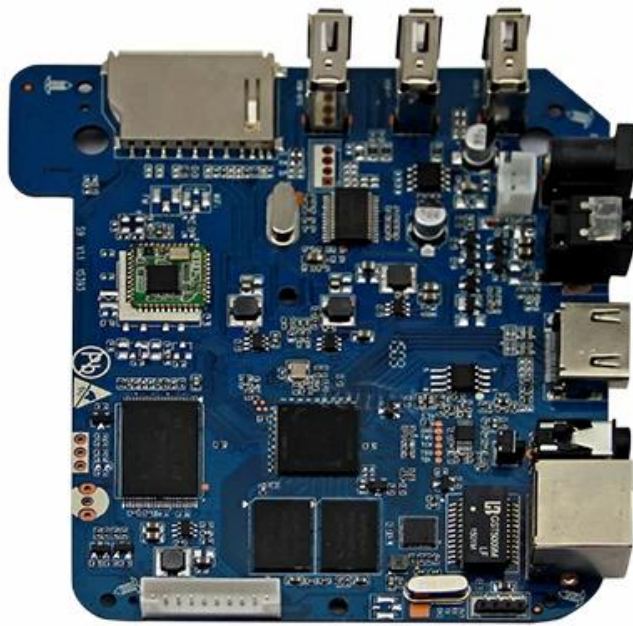
USB*3

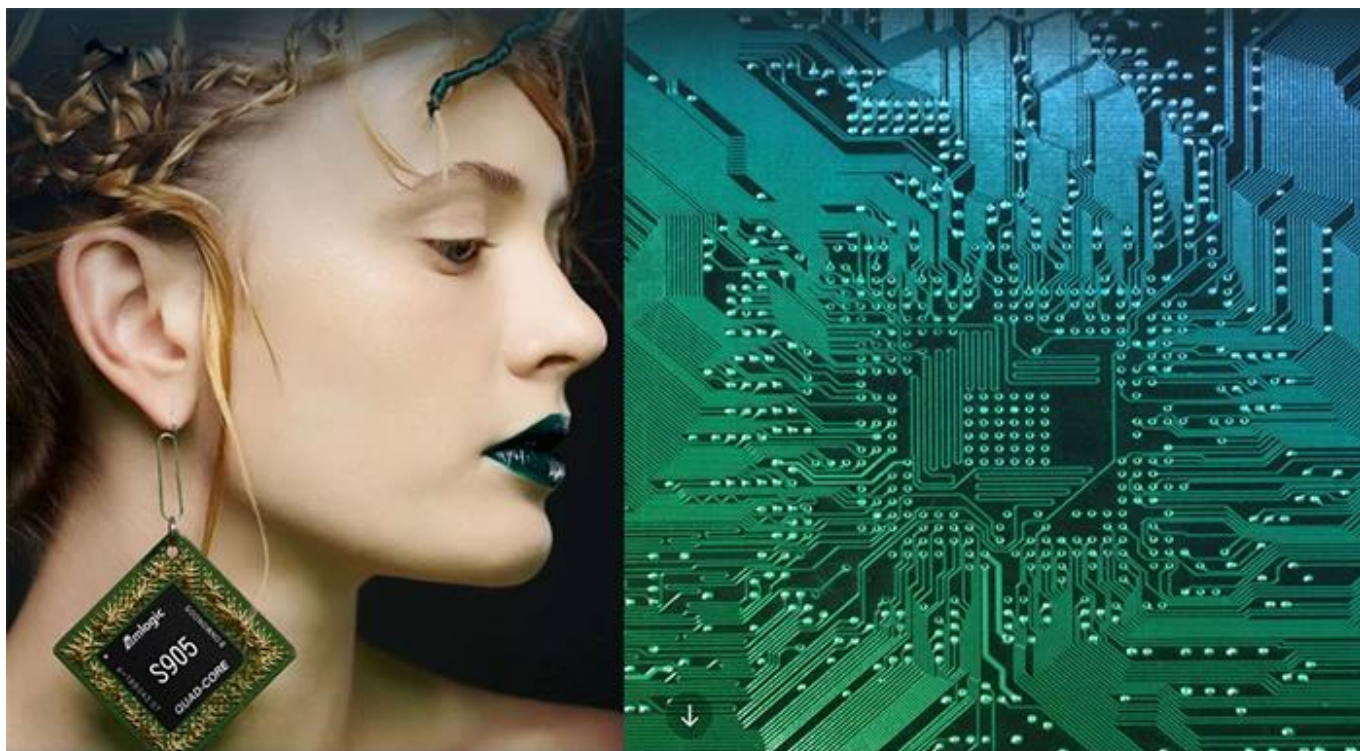
SD/MMC Card



ON/OFF Button DC Port RJ45 ETHERENT AV Port HDMI™ OPTICAL Port







S905

64-Bit
Quad Core
Cortex A53

4K

H.265
@60fps

HDMI 2.0
HDCP 2.2

TSMC
28NM

DRM



64 bit CPU,

While maintaining the same power consumption, the computing power of CPU has also been greatly improved.

With 4K2K decoding capabilities,
it make 4K become the standard.



The color quantity is increase by 60 times more than the previous generation.



10 bit decoding, it could highest support 1.07 billion color,
Compared to the previous generation of 16.7 million colors, it increase by 60 times.

The sound upgrade,
while supporting Dolby Digital Plus and DTS.



3 + 2 core high-frequency GPU,
it make the TV turn into the PlayStation.



The single core CPU frequency increase of 25%, 5-core computing speed can be achieved by the previous generation 8-core, it allowing you to experience smooth gaming.

Support 802.11ac WiFi protocol.

200 Mbps
实际速率

120 Mbps
上一代实际速率



Wireless projection the image&video
of the phone/computer onto the TV.



Miracast



Airplay



DLNA



SMB
共享协议



Intel@WIDI

Equipped with smart contiguous
memory allocation technology,
make the system running more smoothly.



4.1



Bluetooth[®]



HD2.0
Image output



HD1.0
Image output

Home entertainment, perfect enjoyment

- Extreme graphics, HD2.0 Image output
 - 1000M Ethernet LAN
-



Unforgettable visual
experience.

1920 * 1080 HD



Support 3D



1080P



Ultra Wide Vision

It's all about speeding up.



1GB
DDR3
dual channel memory



8GB
eMMC
flash memory

1G DDR3 dual channel memory and 8GB eMMC high speed flash memory.

The dual channel memory runs 1080p HD videos and large games flawlessly,
while the eMMC high speed flash memory controls apps, games, and multi-media storage with ease.

Everything comes alive with 3D.



Experience home entertainment in 3D!



S905

One of industry's first multimedia SoCs with 64-bit architecture, S905 is designed to deliver immersive theatre-level home entertainment to the users with excellent audio and video processing capabilities. It also supports operator-level security and is a perfect choice for OTT/IPTV/DVB STB, TV dongle and smart home applications.