

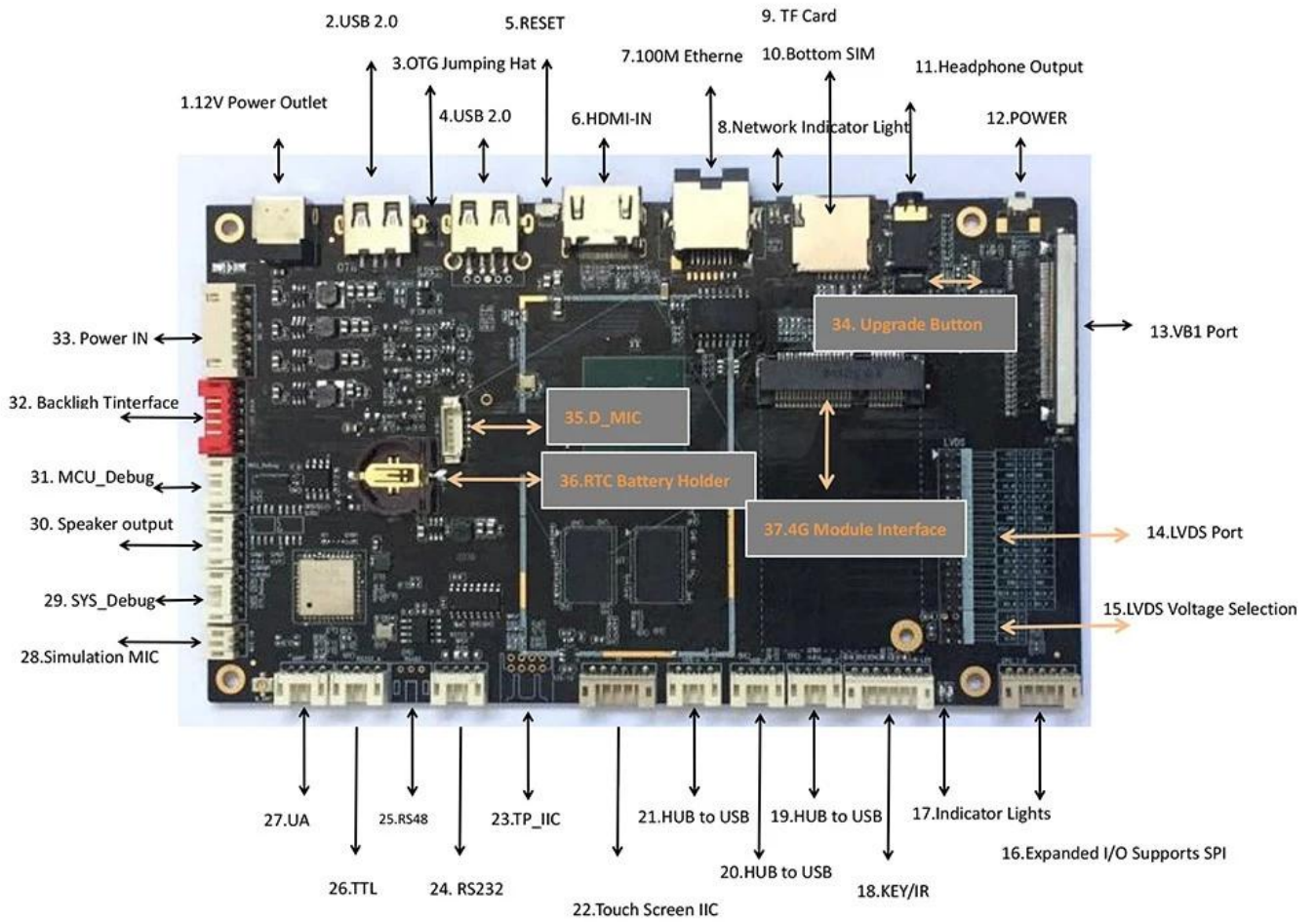
Amlogic T972 4K

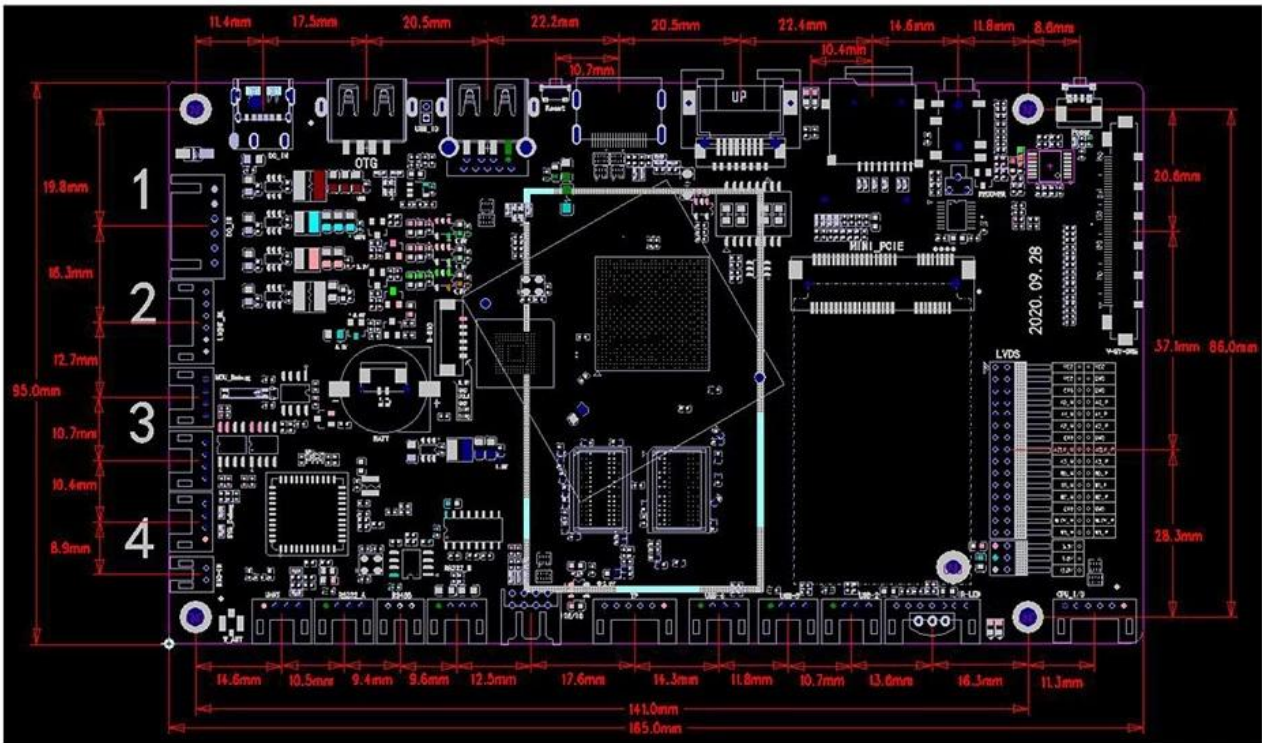
Core

Processor	Amlogic T972
CPU	Amlogic T972 ARM Cortex A55 1.98GHZ
GPU	ARM Mail-450
RAM	2GB
Storage	4GB(16GB/32GB/64GB)
OS	Android 9.0
Wi-Fi / BT	2.4Ghz(2.4G/5G); BT4.2

I/O

Display	1x LVDS, 50/60Hz LCD
Resolution	4K*2K@60Hz
Power	12V, PWM
USB2.0	1*USB OTG, 1*USB2.0A, 3*USB
Serial	4x UART (1x 232, 1x TTL, 1x 485, 1x UART)
Expansion	SPI
HDMI	1x, HDMI 2.1 4K*2K@60Hz
Audio	4Ω/15W
MIC	1x MIC, 1x PDM, 4x MIC
PC	1 PC
4G	PCI-E 4G
TP	1x I ² C
IO	IO, SPI, ADC
Network	10/100M RJ45
RTC	RTC
OTA	USB OTA
Size	125mm*80mm





PCB : 4-layer board

Size : 165mm*95mm, Thickness 1.2mm

Screw hole specifications : $\Phi 3.0\text{mm} \times 4$

Amlogic T7920 64bit ARM Cortex-A55, Mali-G31 GPU, 4K H.265, Android 9.0, LAN, WiFi, 4G LTE, USB-C, HDMI, OTG, etc.

Amlogic T7920 SoC, Cortex-A55 1.9GHz, Mali-G31 GPU, 4K H.265, Android 9.0, LAN, WiFi, 4G LTE, USB-C, HDMI, OTG, etc.

1.3

- ◆ 4-layer PCB, 1.2mm thickness, 165mm x 95mm.
- ◆ HDMI IN/V-By-One/LVDS interface.
- ◆ LAN, WiFi, 4G LTE, USB-C, HDMI, OTG, etc.

