

# Octa Core 4K TV 4K 4K 4K 4K 4K 4K 4K

|           |  |
|-----------|--|
| Processor | Rockchip RK3588 4K 4K 4K 4K TV 4K  |
| CPU       | Rockchip RK3588 8nm 4K 4K, 4K 4K Cortex-A76 4K 4K Cortex-A55                                     |
| GPU       | ARM Mali-G610 MC4 OpenGL ES 1.1/2.0/3.1/3.2 Vulkan 1.1, 1.2 OpenCL 1.1,1.2,2.0 4K 4K 2D 4K 4K 4K |
| NPU       | 6 TOPS(int4/int8/int16/FP16/BF16/TF32 4K)  |
| RAM       | 4GB/8GB(64K LPDDR4/LPDDR4x)  |
| Storage   | 32G/64G/128G/256G(eMMC5.0/5.1)   |
| WiFi      | 4K IEEE 802.11a/b/g/n/ac/ax<br>4K Wi-Fi6 2.4GHz/5.8GHz(PCIe v3.0)                                |
| OS        | Android 12 4K 4K   |
| Version   | 4K 5.0   |

## 4K&4K 4K

|    |  |
|----|--|
| 4K | <ul style="list-style-type: none"> <li>* MPEG-1,MPEG-2,MPEG-4,H.263,H.264,H.265,VC-1,VP9,VP8 MVC,AV1 4K 4K 4K</li> <li>* MMU 4K</li> <li>* 4K 4K 4K 4K 4K 4K</li> <li>* H.264 AVC/MVC 4K10 L6.0: 8K@30fps(7680x4320)</li> <li>* VP9 4K0/2 L6.1: 8K@60fps(7680x4320)</li> <li>* H.265 HEVC/MVC Main10 L6.1: 8K@60fps(7680x4320)</li> <li>* AVS2 Profile0/2 L10.2.6: 8K@60fps(7680x4320)</li> <li>* AV1 4K 4K 8/10K L5.3: 4K@60fps(3840x2160)</li> <li>* MPEG-2 4K MP: 1080p@60fps(1920x1088)</li> <li>* MPEG-1 4K MP: 1080p@60fps(1920x1088)</li> <li>* VC-1 4K AP 4K 3: 1080p@60fps(1920x1088)</li> <li>* VP8 4K2: 1080p@60fps(1920x1088)</li> <li>4K 4K</li> <li>* 4K H.265/H.264 4K 4K</li> <li>* 4K 8K@30fps 4K</li> <li>* 4K 4K 4K 4K 4K 4K</li> <li>* HDR 4K 3DNR 4K 4K 16M 4K ISP</li> <li>8K 4K 4K I2S0</li> <li>* 4K 8K 4K TX 4K 8K 4K RX 4K</li> <li>* 16K 4K 32K 4K 4K 4K</li> <li>* 4K 192KHz 4K 4K</li> <li>* 4K 4K 4K 4K 4K, 4K 4K 4K 4K</li> <li>* 3K I2S 4K 4K(4K, 4K 4K, 4K 4K)</li> <li>* 4K PCM 4K 4K(4K, 4K1, 4K2, 4K3)</li> <li>* TDM 4K, 1/2K 4K 4K, 1K 4K 4K, 2K 4K 4K, 4K 4K 4K 4K 4K 4K 4K</li> <li>* I2S, PCM 4K TDM 4K 4K 4K 4K 4K.</li> </ul> |
| 4K |  |
| 4K |  |

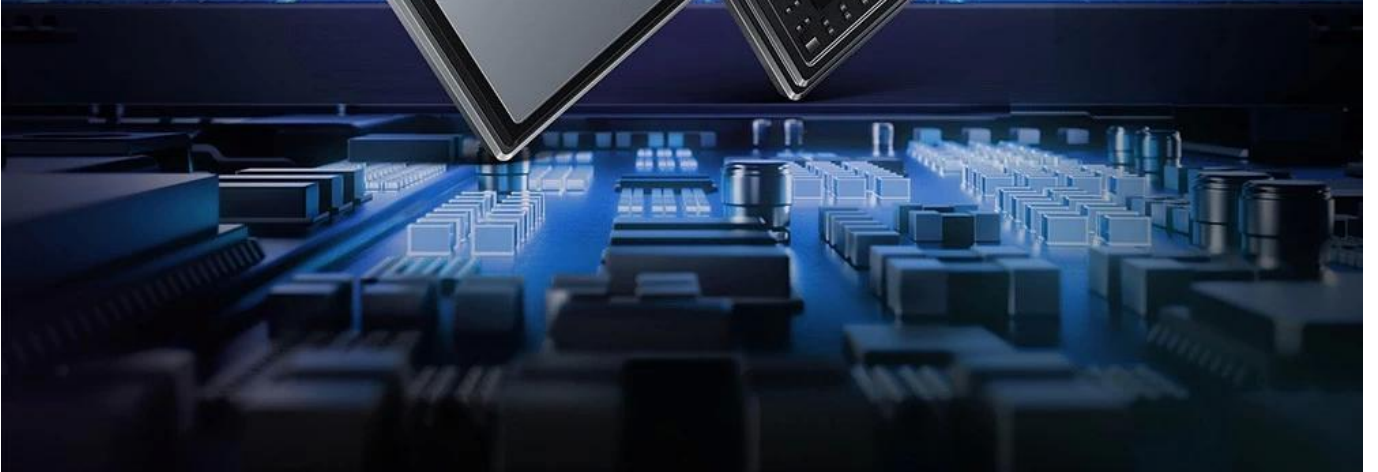
## I/O 4K

|       |   |
|-------|---|
| Power | DC 12V/2A 4K 4K: 4K   |
| RTC   | 4K  |
| IR    | 4K BT 4K 4K   |
| HDMI  | HDMI 4K 1:HDMI 2.1/7680x4320@60Hz<br>HDMI 4K 2:HDMI 2.1/4096x2304@60Hz<br>HDMI IN:HDMI 2.0/HDMI 1.4b 4K x 2K 4K 4K(3840x 2160p@24Hz/25Hz/30Hz 4K 4096x2160p@24Hz) |
| Port  | 1*3.5mm 4K  |
| Port  | 4K 1:1*1000M(RGMII)   |
| Port  | 4K 2:1*1000M  |
| TF    | 1*TF 4K   |
| USB   | 2*USB 2.0(4K)   |
| USB   | 1*USB3.0(4K)  |
| C     | 1*4K C 3.0(4K 4K) 4K 4K   |



# Rockchip RK3588

Next generation Octa-Core processor with high performance AI system-on-module



# 8K Ultra High Quality

Unlock the potential of 8K video output and 4K video input. Rich details display to let you see the world more clearly.



4K 3840×2160

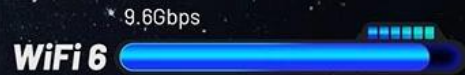
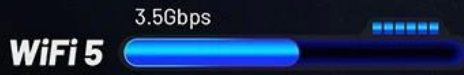


8K 7680×4320



# WiFi 6

WiFi6 is faster and has a larger capacity



2T2R 802.11 ax/ac/a/b/g/n



BT 5.0



# Android 12/Linux Debian11

Compatible with Android and Linux operating systems



# Multi-Screen Different Display

Enhance your viewing experience with multi-screen display.  
Perfect for immersive, high-definition, multi-screen interactive scenarios.



# Large Memory Capacity

Large storage capacity up to 32GB RAM and 128GB ROM, which allows you to install a wide number of applications.

RAM



4G

8G

16G

32G

ROM



16G

32G

64G

128G





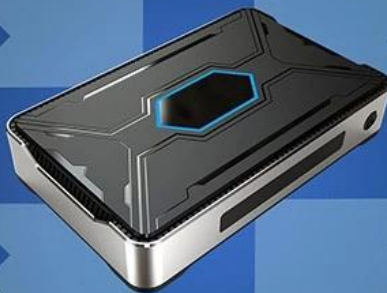
# WHAT CAN WE DO?



Watch movies



Working Conference



Teaching



Play games



Experience the ultimate in home entertainment with our Octa Core Android TV Box. TV content is available in 8K resolution, providing a cinematic viewing experience. The device is designed for high performance and reliability.

### **Android OS:** Enjoy the flexibility of Android

Our Android TV Box features an Octa Core processor, ensuring smooth performance and fast loading times. The Android OS supports a wide range of streaming services, including Netflix, Hulu, and Disney+. You can also download apps from the Google Play Store. The TV Box is designed to be a central hub for your entertainment needs, offering a seamless and enjoyable viewing experience.

### **WiFi 6:** Fast and reliable connectivity

Our Octa Core Android TV Box is equipped with WiFi 6, providing faster and more reliable connectivity. WiFi 6 offers improved performance, especially in crowded networks, ensuring a smooth streaming experience. The device also supports other connectivity options, including Ethernet and Bluetooth, making it easy to integrate into your home network.

### **Ports:** Versatile connectivity options

Our Octa Core Android TV Box offers a variety of ports for connectivity. It features a USB port for external storage, an HDMI port for connecting to your TV, and a Bluetooth port for wireless audio. The device is designed to be a versatile and convenient solution for your entertainment needs.

### **Summary:**

Our Octa Core Android TV Box is a powerful and versatile entertainment solution. It features an Octa Core processor, 8K Ultra HD resolution, and WiFi 6 connectivity. The device is designed to provide a seamless and enjoyable viewing experience. For more information, visit our [Android TV Box](#) page.