

Rockchip RK3588 8K WiFi6 4G 16GB TV

Model	RK3588 TV
CPU	Rockchip RK3588 8nm Cortex-A76 Cortex-A55
GPU	ARM Mali-G610 MC4 OpenGL ES 1.1/2.0/3.1/3.2 Vulkan 1.1, 1.2 OpenCL 1.1,1.2,2.0
NPU	6 TOPS(int4/int8/int16/FP16/BF16/TF32)
RAM	4GB/8GB(64 LPDDR4/LPDDR4x)
ROM	32G/64G/128G/256G(eMMC5.0/5.1)
WiFi	IEEE 802.11a/b/g/n/ac/ax Wi-Fi6 2.4GHz/5.8GHz(PCIe v3.0) 2T2R
OS	Android 12
Version	5.0

Video	<ul style="list-style-type: none"> * MPEG-1,MPEG-2,MPEG-4,H.263,H.264,H.265,VC-1,VP9,VP8 MVC,AV1 * MMU * H.264 AVC/MVC L6.0: 8K@30fps(7680x4320) * VP9 L6.1: 8K@60fps(7680x4320) * H.265 HEVC/MVC Main10 L6.1: 8K@60fps(7680x4320) * AVS2 Profile0/2 L10.2.6: 8K@60fps(7680x4320) * AV1 L5.3: 4K@60fps(3840x2160) * MPEG-2 MP: 1080p@60fps(1920x1088) * MPEG-1 MP: 1080p@60fps(1920x1088) * VC-1 AP 3: 1080p@60fps(1920x1088) * VP8 2: 1080p@60fps(1920x1088) * H.265/H.264 8K@30fps * HDR 3DNR 16M ISP * I2S0 8 TX 8 RX * 16 32 192KHz * 3 I2S (1, 2, 3) * 4 PCM (1, 2, 3) * TDM 1/2, 1, 2, 3 * I2S, PCM TDM
-------	------------------------------------------------------------------------------------------------------------------------------------------------------------------------------------------------------------------------------------------------------------------------------------------------------------------------------------------------------------------------------------------------------------------------------------------------------------------------------------------------------------------------------------------------------------------------------------------------------------------------------------------------------------------------------------------------------------------------------------------------------------------------------------------------

I/O	DC 12V/2A
RTC	
IR	BT
HDMI	HDMI 1: HDMI 2.1/7680x4320@60Hz HDMI 2: HDMI 2.1/4096x2304@60Hz HDMI IN: HDMI 2.0/HDMI 1.4b 4K x 2K (3840x 2160p@24Hz/25Hz/30Hz)
Size	1*3.5mm
GPIO	1:1*1000M(RGMII) 2:1*1000M
TF	1*TF

USB 接口

2*USB 2.0(接口)

1*USB3.0(接口)

C 接口

1*Type C 3.0(接口) 接口



Rockchip RK3588

Next generation Octa-Core processor with high performance AI system-on-module



8K Ultra High Quality

Unlock the potential of 8K video output and 4K video input. Rich details display to let you see the world more clearly.



4K 3840×2160

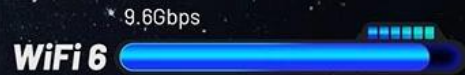
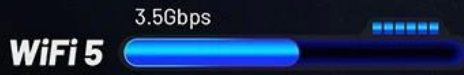


8K 7680×4320



WiFi 6

WiFi6 is faster and has a larger capacity



2T2R 802.11 ax/ac/a/b/g/n



BT 5.0



Android 12/Linux Debian11

Compatible with Android and Linux operating systems



Multi-Screen Different Display

Enhance your viewing experience with multi-screen display.
Perfect for immersive, high-definition, multi-screen interactive scenarios.



Large Memory Capacity

Large storage capacity up to 32GB RAM and 128GB ROM, which allows you to install a wide number of applications.

RAM



4G

8G

16G

32G

ROM



16G

32G

64G

128G



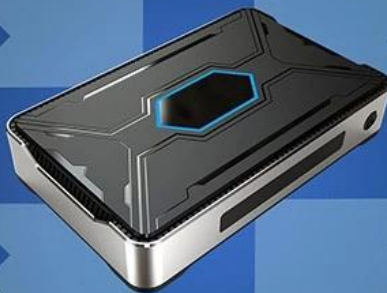
WHAT CAN WE DO?



Watch movies



Working Conference



Teaching



Play games

Interface & Dimension



Rockchip RK3588 Octa Core TV Box 是一個功能強大的電視盒，支持 Android 12 和 Linux Debian 11 系統。它提供了 8K 視頻輸出，支持 PC 顯示。RK3588 是一個強大的處理器，適合各種應用。

主要特點：

Rockchip RK3588 採用八核 CPU，配備 4GB RAM 和 16GB 存儲。它支持 8K 視頻輸出，並具有多種接口，包括 HDMI、USB、以太网和 Type-C。該設備適合家庭娛樂和專業應用。

系統支持：

Rockchip RK3588 支持 Android 12 和 Linux Debian 11 系統。Android

12 Google Play 应用程序，支持 Linux Debian 11，IT 爱好者必备。RK3588 电视盒子支持 TV 盒子，支持 8K 视频。

8K 视频支持

RK3588 8K 视频支持，搭载 Mali-G610 GPU，支持 Android 系统。RK3588 电视盒子，支持 8K 视频，支持 WiFi 6。

WiFi 6 支持

Rockchip RK3588 电视盒子，支持 WiFi 6，支持 8K 视频，支持 HDMI 2.1。

其他功能

RK3588 电视盒子，支持 HDMI 2.1，支持 HDR，支持 USB 接口。

总结

Rockchip RK3588 Octa Core TV Box，支持 Octa Core CPU，支持 8K 视频，支持 WiFi 6。