

# Rockchip RK3588 8K Android 12 OTT TV

8K



## Processor

Processor	Rockchip RK3588 OTT TV
CPU	Rockchip RK3588 8nm Cortex-A76 Cortex-A55
GPU	ARM Mali-G610 MC4 OpenGL ES 1.1/2.0/3.1/3.2 Vulkan 1.1, 1.2 OpenCL 1.1,1.2,2.0
NPU	6 TOPS(int4/int8/int16/FP16/BF16/TF32)
RAM	4GB/8GB(64-bit LPDDR4/LPDDR4x)
Storage	32G/64G/128G/256G(eMMC5.0/5.1)
WiFi	IEEE 802.11a/b/g/n/ac/ax Wi-Fi6 2.4GHz/5.8GHz(PCIe v3.0)
OS	Android 12
Security	TrustZone

## Video & Audio

Video	* MPEG-1,MPEG-2,MPEG-4,H.263,H.264,H.265,VC-1,VP9,VP8 MVC,AV1 * MMU * H.264 AVC/MVC L6.0: 8K@30fps(7680x4320) * VP9 L6.1: 8K@60fps(7680x4320) * H.265 HEVC/MVC Main10 L6.1: 8K@60fps(7680x4320) * AVS2 Profile0/2 L10.2.6: 8K@60fps(7680x4320) * AV1 L5.3: 4K@60fps(3840x2160) * MPEG-2 MP: 1080p@60fps(1920x1088) * MPEG-1 MP: 1080p@60fps(1920x1088) * VC-1 AP 3: 1080p@60fps(1920x1088) * VP8 2: 1080p@60fps(1920x1088)
Audio	* H.265/H.264 8K@30fps * HDR 3DNR 16M ISP * 8 I2S * 8 TX 8 RX * 16 32 * 192KHz * 3 I2S (1, 2, 3) * 4 PCM (1, 2, 3) * TDM 1/2, 1, 2, 3 * I2S, PCM, TDM

## I/O

Power	DC 12V/2A
RTC	

IR                    蓝牙 BT 蓝牙

HDMI                HDMI 1:HDMI 2.1/7680x4320@60Hz  
HDMI 2:HDMI 2.1/4096x2304@60Hz  
HDMI IN:HDMI 2.0/HDMI 1.4b 4K x 2K 帧率 (3840x 2160p@24Hz/25Hz/30Hz 帧率  
4096x2160p@24Hz)

接口                1\*3.5mm 接口

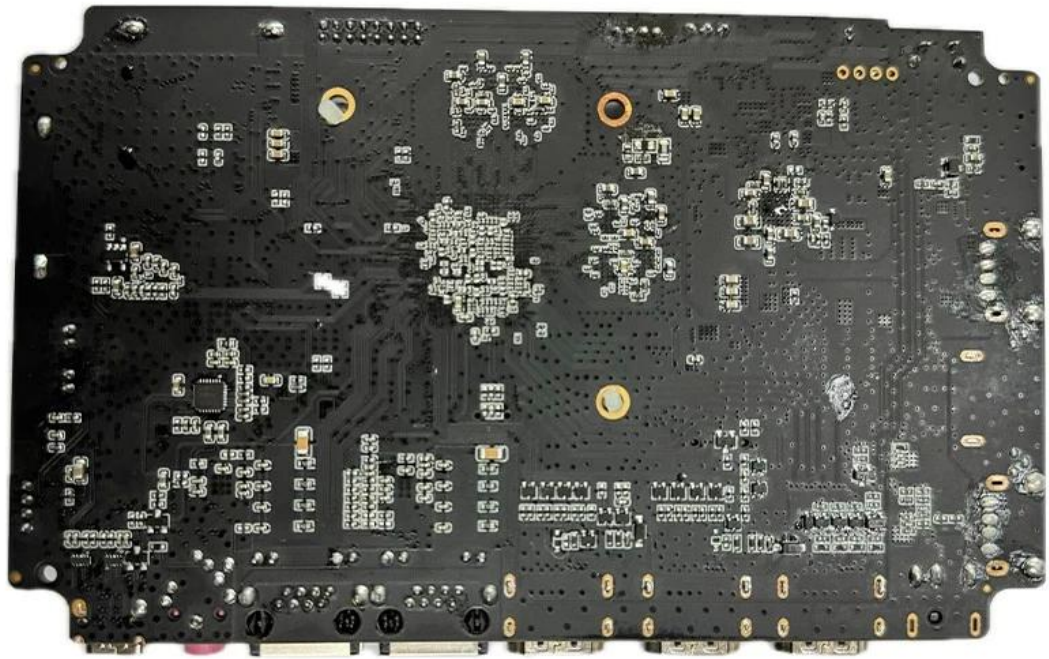
接口                接口 1:1\*1000M(RGMII)  
接口 2:1\*1000M

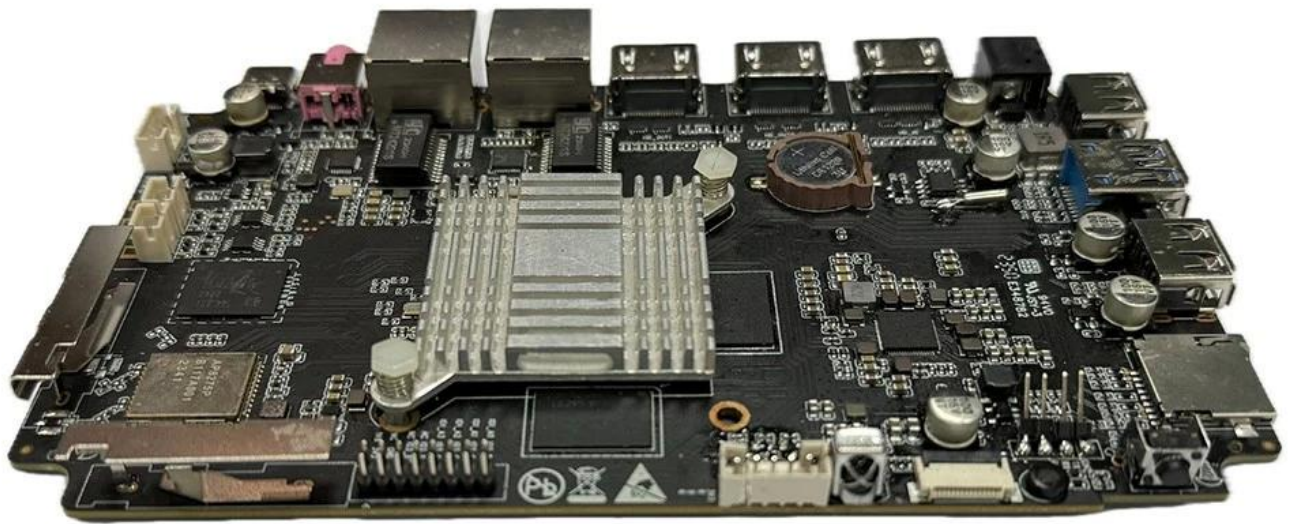
TF 接口            1\*TF 接口

USB 接口           2\*USB 2.0(接口)  
1\*USB3.0(接口)

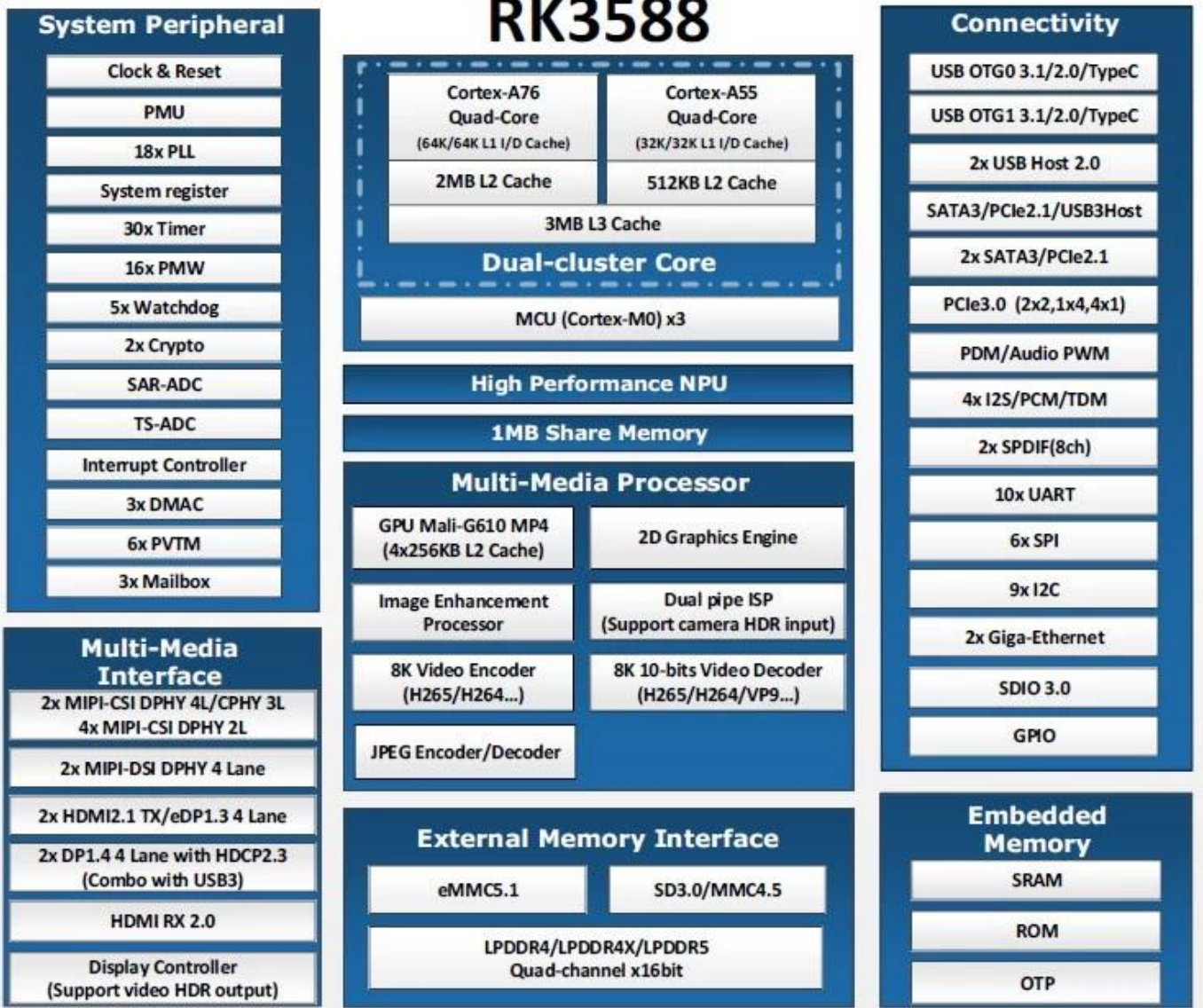
C                    1\*接口 C 3.0(接口 接口) 接口 接口











## Typical Application Diagram – AIoT



