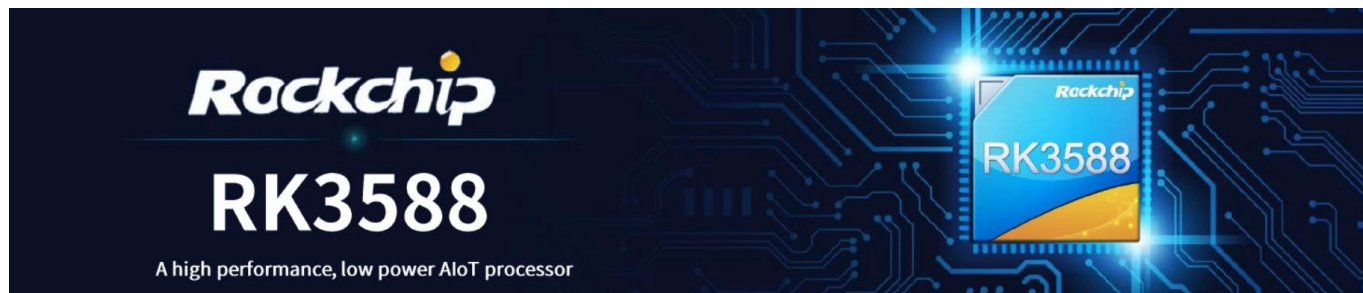


Rockchip RK3588 四核 CPU 4GB 内存 32GB 闪存

支持 HD 摄像头 支持 4K 视频



主要规格

处理器	Rockchip RK3588 四核 CPU
CPU	Rockchip RK3588 四核 ARM, 四核 Cortex-A76 @2.4GHz 四核 Cortex-A55@1.8GHz
GPU	ARM Mali-G610 MC4, OpenGL ES 1.1/2.0/3.1/3.2, Vulkan 1.1, 1.2, OpenCL 1.1,1.2,2.0 支持 2D 加速
NPU	6 TOPS(int4/int8/int16/FP16/BF16/TF32 支持)
RAM	4GB LPDDR4X(2GB*2, 支持 32GB)
闪存	32G
WiFi	支持 WiFi 6E, 802.11 ax/ac/a/b/g/n
OS	支持 Linux
接口	支持 USB 5.0

接口与外设

电源	C 接口 (12V/2A)
存储	1*TF 存储卡 1*PCIE 接口
摄像头	1* 摄像头
RTC	CR1220 实时时钟
串口	2*UART 接口
网络	1* 10/100/1000Mbps RJ45 接口
WiFi	支持 WiFi 6E, 802.11 ax/ac/a/b/g/n
USB	1*USB3.0 接口 1*USB2.0 接口 1* USB2.0 接口 4 针接口
LED	1*3 针 LED 接口
LCD	1*4 针 32 针 MIPI 接口 1* 摄像头 30 针 EDP 接口
显示	1*HD 接口, HD 2.1 接口 8K@60Hz 支持 1*DP 接口, DP1.4 接口 4K@60Hz 支持 1*MIPI-CSI(接口)
摄像头	1*HD 接口, 支持 HD 2.0 4K@60Hz 支持
接口	1*接口 1*L/R, 接口 接口 接口 (3.5mm 接口)
音频	1*SPK 7*GPIO, 3.3V 接口 4*I2C, 3V 接口, 接口
其他	1*ADC 2*PWM 1*5V 接口

其他信息

Codec: MPEG-1, MPEG-2, MPEG-4, H.263, H.264, H.265, VC-1, VP9, VP8, MVC AV1@MMU

Codec: H.264 AVC/MVC Main10 L6.0: 8K@30fps(7680*4320);

Codec: VP9 Profile0/2 L6.1: 8K@60fps(7680*4320);

Codec: H.265 HEVC/MVC Main10 L6.1: 8K@60fps(7680*4320);

Codec: AVS2 0/2 L10.2.6: 8K@60fps(7680*4320);

Codec: AV1 8/10bit L5.3: 4K@60fps(3840*2160);

Codec: MPEG-2 MP 1080p@60fps(1920*1088);

Codec: MPEG-1 MP 1080p@60fps(1920*1088);

Codec: VC-1 AP 1080p@60fps(1920*1088);

Codec: VP8 1080p@60fps(1920*1088)

Codec: MP3, AAC, FLAC, WAV

Codec: RTL8111HS

Codec: 10/100/1000Mbps

Codec: AP6275P

WiFi: 2.4Gbps

WiFi: 802.11ax/ac/a/b/g/n

WiFi: 2.4GHz 5GHz

WiFi: MU-MIMO

WiFi: BT 5.0

WiFi: BLE

WiFi: YBT

HDMI TX: 8K@60fps(7680x4320)

HDMI TX: 4K@60fps(3840x2160)

HDMI TX: MIPI CSI 4K@60fps(3840x2160)

HDMI TX: DP(type-c) 4K@60fps(3840x2160)

HDMI TX: HDMI RX 4K@60fps(3840*2160)

HDMI TX: MIPI DSI

PIP(picture-in-picture)

RTC: HYM8563

RTC: HYM8563

RTC: HYM8563

RTC: HYM8563

RTC: HYM8563

RTC: HYM8563

RTC: HYM8563

RTC: HYM8563

RTC: HYM8563

RTC: HYM8563

RTC: HYM8563

RTC: HYM8563

RTC: HYM8563

RTC: HYM8563

RTC: HYM8563

RTC: HYM8563

RTC: HYM8563

RTC: HYM8563

RTC: HYM8563

RTC: HYM8563

RTC: HYM8563

RTC: HYM8563

RTC: HYM8563

RTC: HYM8563

RTC: HYM8563

RTC: HYM8563

RTC: HYM8563

RTC: HYM8563

RTC: HYM8563

RTC: HYM8563

RTC: HYM8563

RTC: HYM8563

RTC: HYM8563

RTC: HYM8563

RTC: HYM8563

RTC: HYM8563

RTC: HYM8563

RTC: HYM8563

Codec

Codec

WiFi

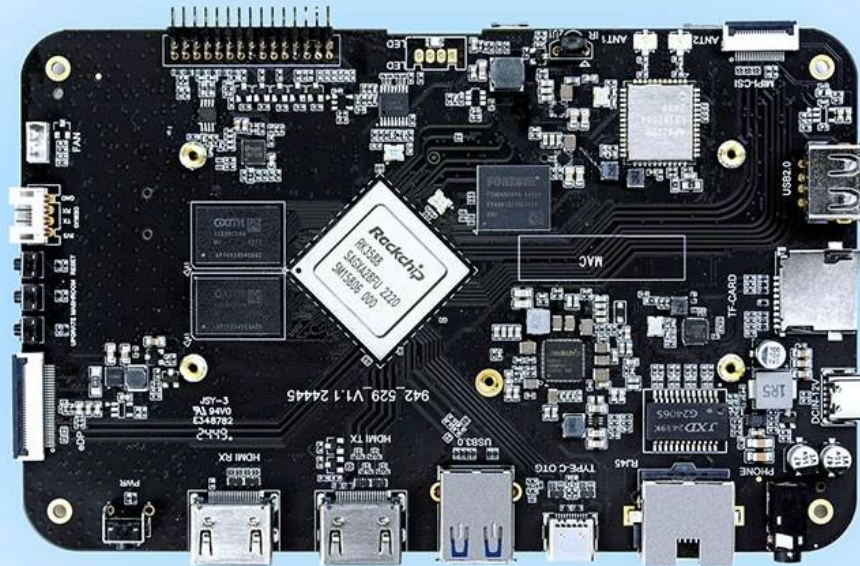
Codec

Codec

RTC

High-Performance AI Development Board

The RK3588 is a flagship AIoT chip built on 8nm LP process, featuring an octa-core CPU (up to 2.4GHz), ARM Mali-G610 MP4 GPU, and a 6TOPs NPU for AI acceleration. It also integrates a 48MP ISP with HDR & 3DNR, supporting major deep learning frameworks for enhanced AI performance.



RK3588
Octa-core CPU



Mali-G610
MC4 1GHz GPU



6Tops
NPU



8K
8K Codec
H.265 HEVC



4~32GB RAM
8~128GB ROM



WiFi6
1000M LAN



BT5.x



Android/Linux

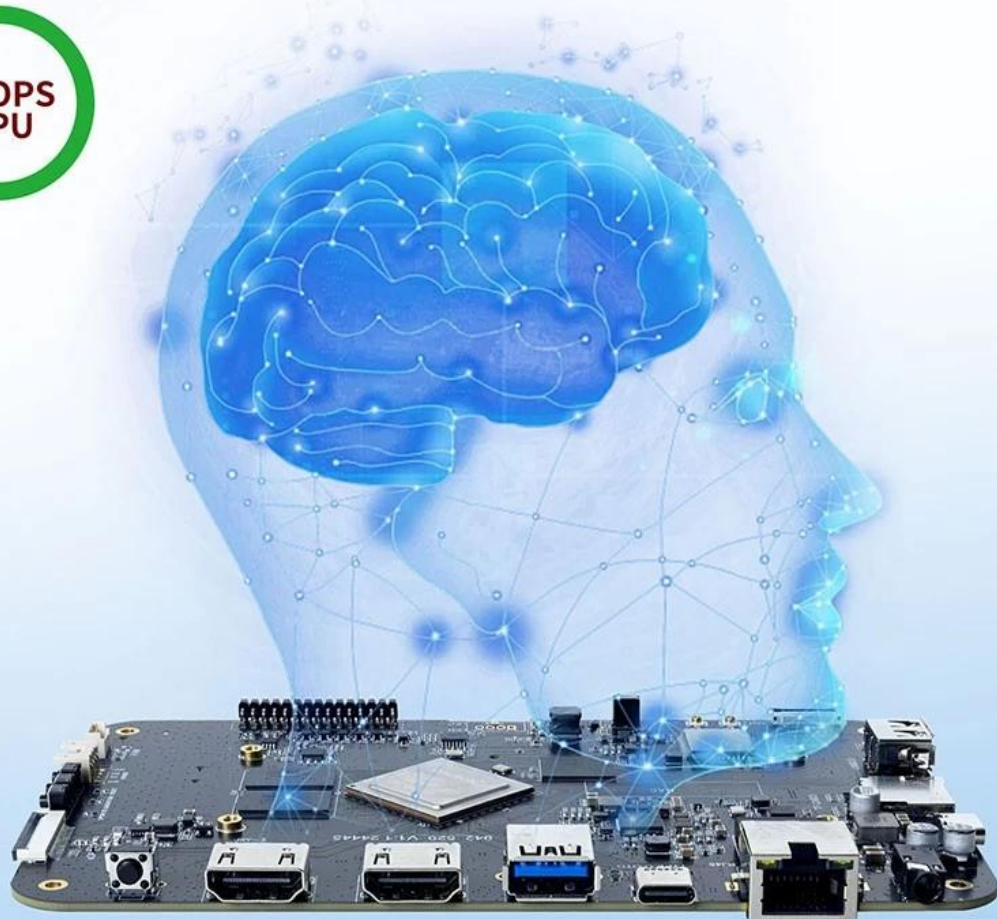
RK3588---Next-Generation Flagship AIoT CPU

Powered by the RK3588 octa-core 64-bit chipset, with ARM Mali-G610 MP4 GPU and 6TOPs AI NPU for superior AI performance and expanded possibilities.



6 TOPS Powerful Computing Boosts AI Applications

Powerful NPU with 6TOPS performance, supporting INT4/INT8/INT16 operations. Compatible with TensorFlow, MXNet, PyTorch, Caffe, and more. Efficiently accelerates convolution and traditional image processing operations like Gaussian filter, median filter, Laplacian, and Sobel, ideal for edge computing and vision control applications.



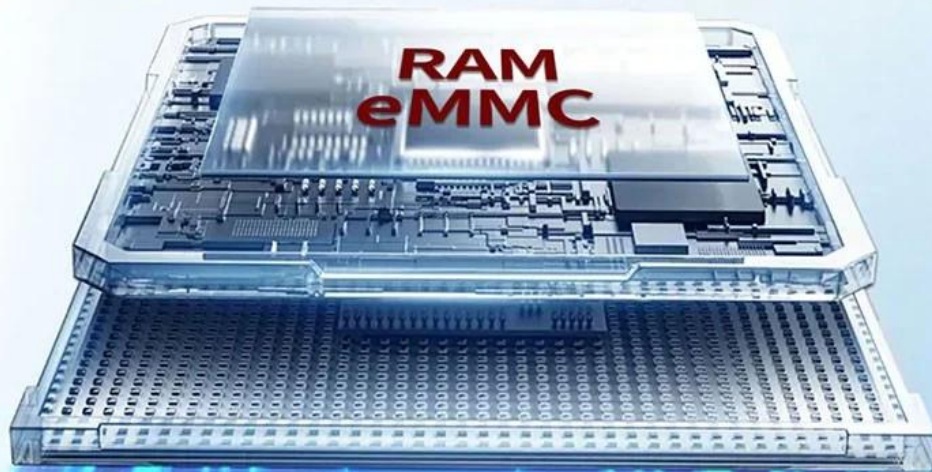
8K Video Encoding & Decoding

Supports 8K@60fps H.265/VP9 decoding and 8K@30fps H.265/H.264 encoding, with up to 32x 1080P@30fps decoding and 16x 1080P@30fps encoding. Delivers stunning 8K video quality.



32GB Large RAM & 128GB EMMC

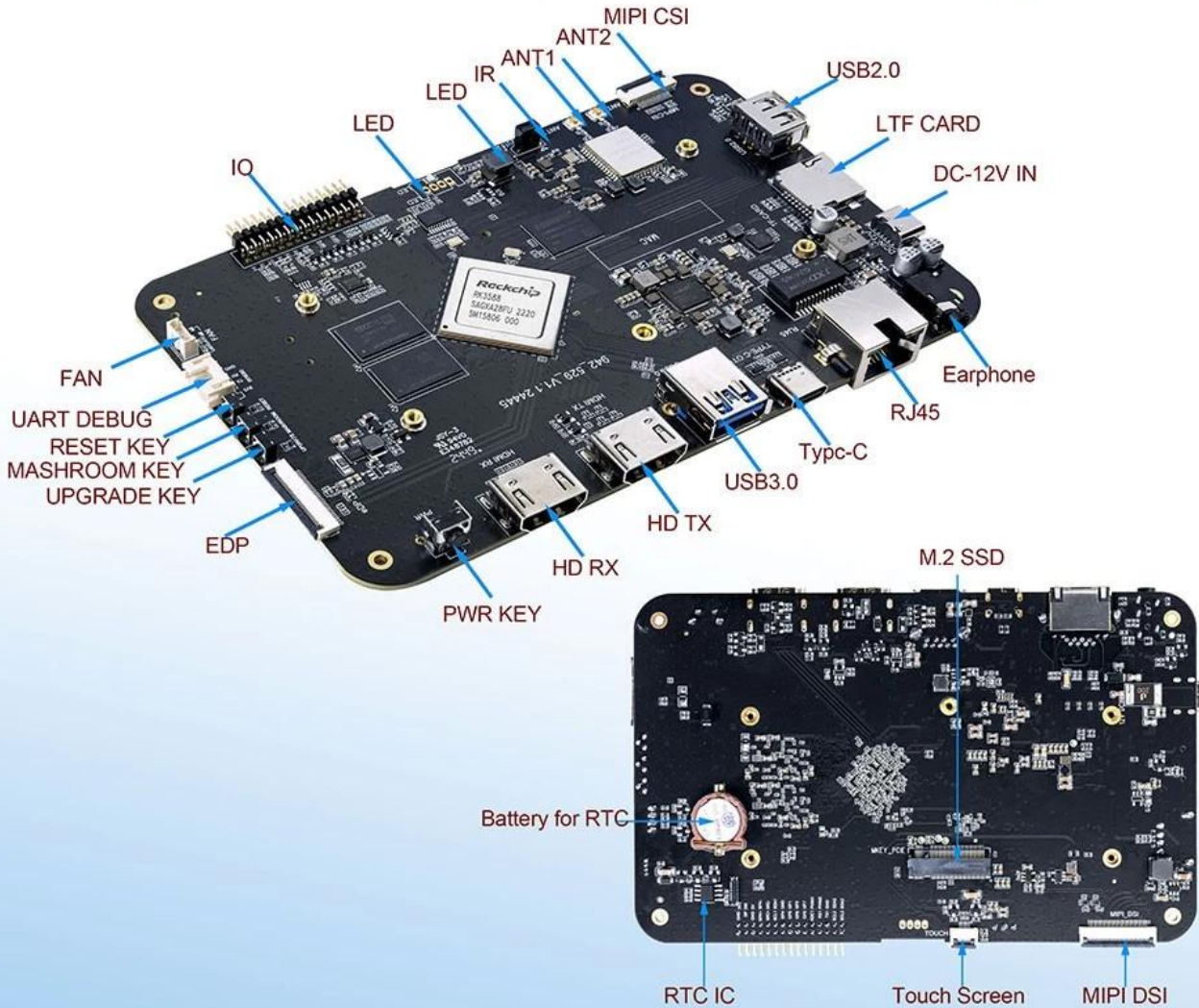
Up to 32GB RAM and 128GB eMMC storage, surpassing previous memory limits for faster response and meeting the demands of high-memory, high-storage applications.



32GB
128GB

Rich Expansion Interfaces

Multiple video output and input interfaces support simultaneous 8K@60fps video output and 4K@60fps video input. It also supports quad-screen display for high-definition interactive scenarios. The board offers rich expansion interfaces for diverse industry applications.



Powerful Network

Onboard Gigabit Ethernet, dual-band WiFi 6 (2.4GHz/5GHz), and Bluetooth 5.3 ensure seamless network connectivity and flexible support for various application needs.



