

27.6 Inch HD Intelligent Square Stainless Steel Frame Advertising Machine Wall Digital Signage Support Multiple Size Customization

Cloud CMS Software Function:

1. Support real-time management and publishing on mobile phones, iPads, and PCs
2. Support remote upgrade of advertising machine software version and OTA upgrade
3. Support synchronous and consistent playback of advertising machines within the same group, with a synchronization interval of less than 500ms
4. Support remote setting of advertising machine properties on mobile phones, control of advertising machine volume, rotation angle, time zone, power off, etc.
5. Support remote monitoring of advertising machine network status, system status, and hardware status, and monitoring of advertising machine playback content
6. Support multiple forms of scrolling subtitles and barrage requirements, The font, size, and content of subtitles and bullet screens can be edited.
7. Scheduling supports multiple priorities, including pad/normal/insert/emergency message priority
8. Scheduling supports multiple cycle modes, daily/weekly/monthly.
9. It can support various media such as video/images/running lights/subtitles/RSS/components/ppt/pdf

Design

Color.	Black or Customized
Size	497mm*564.4mm*35mm(LxWxT)
Material	Stainless Steel
Installation	Wall Hanging
Net Weight	7.4KG

Panel

Panel Size	27.6" a-Si TFT-LCD
Screen Area	461mm(H)*528.4mm (V)
Display Ratio	1:1.15
Max Resolution	1885*2160
Brightness (typ)/(min)	450cd
Contrast Ratio	3200:1
View Angle	178°
Response Time	8ms
Colour	16.7M

Hardware

CPU	Amlogic T972 Quad-Core Cortex-A55 CPU up to 1.9GHz
DDR	2GB DDR4
EMMC	16GB EMMC
WiFi	Built-in 2.4G WiFi(2.4GHz/5GHz Optional)
Bluetooth	BT4.2
Ethernet	100M, Standard RJ45
Ports	USB *2
	DC IN *1
	Ethernet *1
	MIC *1
System	Android 9.0

Multi-language OSD: Chinese, English, Russian, American, French, Spanish, and other Languages Menu

Others

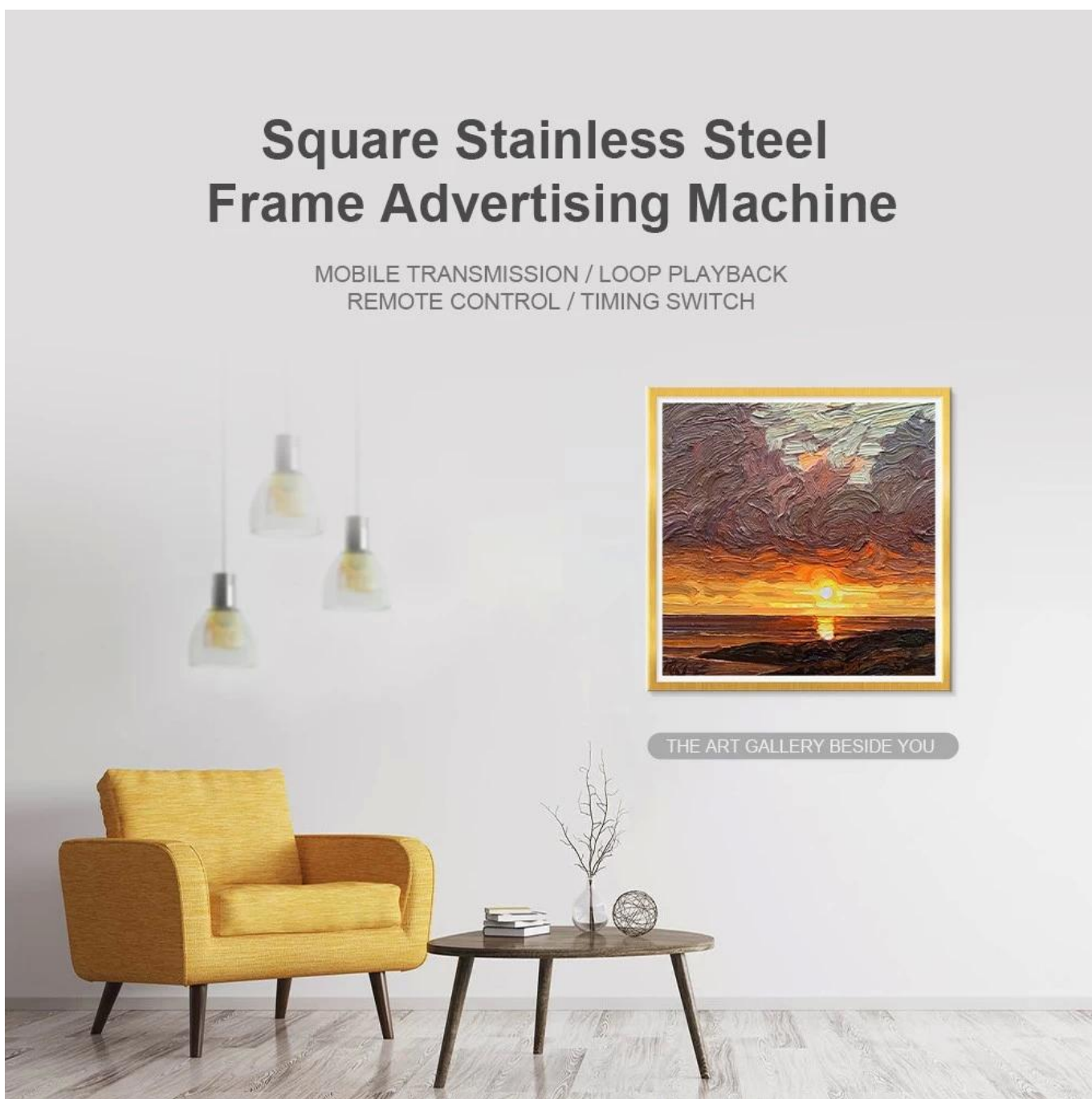
Input Voltage	100V~240V AC 50/60Hz
Power Consumption	58W
Operation Temperature	0°C~50°C
Power Amplifier	2*5W

Square Stainless Steel Frame Advertising Machine

MOBILE TRANSMISSION / LOOP PLAYBACK
REMOTE CONTROL / TIMING SWITCH



THE ART GALLERY BESIDE YOU



FEATURES



Smart home
decoration



Anti glare
screen



Frame
customization



7*24 hours
loopplay



APP
control



Intelligent Split
Screen



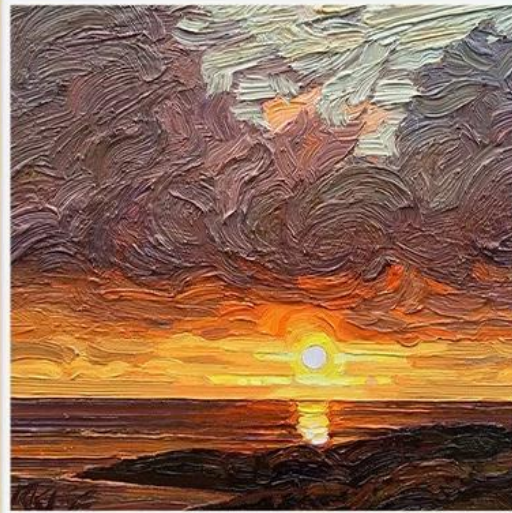
Auto loop
playback



WIFI

1885 X 2160 HD QUALITY

Superior Visibility / Lifelike Picture / Super clear viewing Angle
Fine pixels / Pure color



178°



EASY CONNECTION

Support mobile phone screen, upload pictures at any time,
stay at home, see the world classic



Smart Connect



Remote Control



Real-time
Monitoring



Data
Management

DIGITAL ART SOLUTIONS

NFT Frame, is a fantastic way to give collectors the chance to own unique works of digital art and show off their collections.



SQUARE ASPECT RATIO FOR
NFT DISPLAY



ANTI-GLARE TREATMENT MORE REALISTIC VISION

Screen adopts Unique Anti-Glare Processing Technology to eliminate the reflection, the vision is more delicate and clarity

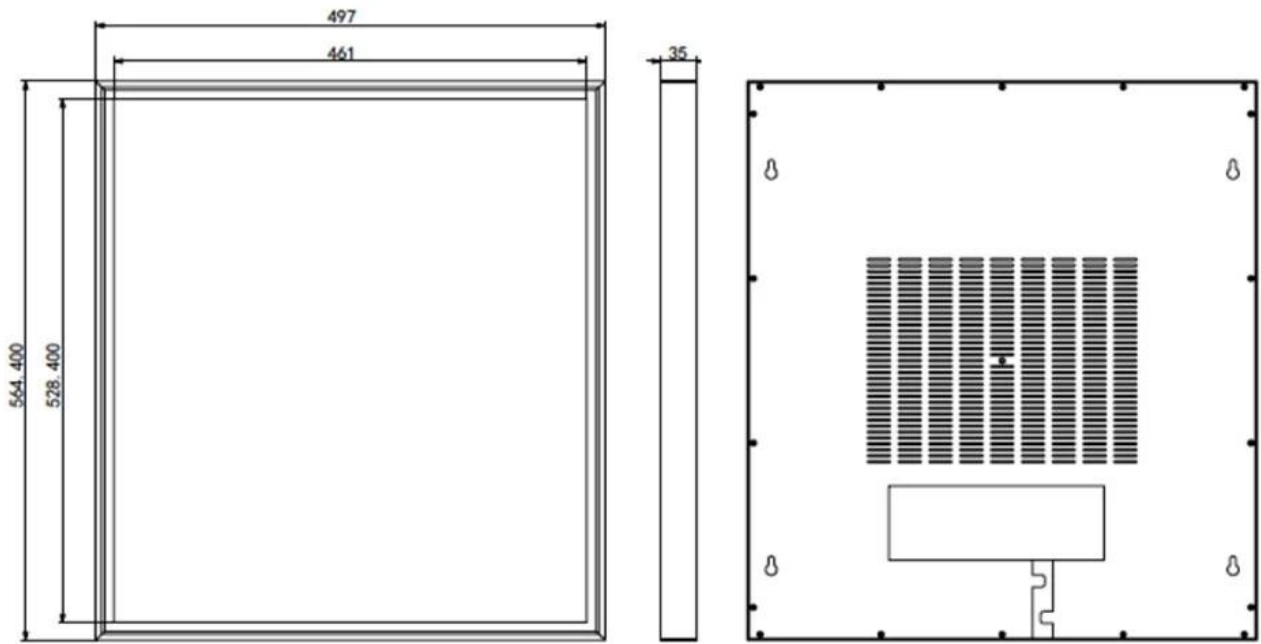


PRODUCT SIZE



PROVIDE CUSTOMIZED SERVICES

27"PRODUCT INFORMATION



AUTOMATIC WHEEL SEEDING

Play Pictures and Videos slide to slide as your wish



Discover the ultimate advertising solution with our 27.6-inch HD intelligent digital signage featuring a high-quality stainless steel square frame. Designed for modern businesses, this wall-mounted signage offers a harmonious blend of style, durability, and advanced technology to meet your advertising and branding needs.

Elegant Design and Sturdy Construction

The stainless steel frame provides a premium, contemporary look that complements any setting, from upscale boutiques to professional office spaces. The material ensures robust performance and resistance to wear and tear, making it ideal for high-traffic environments. Its square frame adds a modern touch, creating a visually appealing presence that draws attention to your content.

High-Definition Display with Customization Options

This digital signage boasts a 27.6-inch HD display that delivers sharp, vibrant visuals, ensuring your multimedia content stands out. Whether you're displaying promotional videos, high-resolution images, or informational text, the signage ensures maximum engagement. Additionally, it supports

multiple size customizations, enabling businesses to tailor the device to their specific needs, enhancing versatility across various applications.

Intelligent Technology for Seamless Operation

Equipped with intelligent software, the signage allows for the easy scheduling and management of multimedia content. Its compatibility with diverse formats ensures that your videos, images, and text are presented flawlessly. The signage also supports remote operation, enabling businesses to update content in real-time, ensuring relevance and timely promotions.

Easy Installation and Maintenance

The lightweight design of this wall-mounted signage simplifies installation, saving time and effort for users. Its durable stainless steel frame ensures low maintenance requirements, making it a cost-effective investment for long-term use.

Versatile Applications

This signage is perfect for a wide range of environments, including retail stores, restaurants, hotels, and corporate offices. Whether you're promoting sales, enhancing brand visibility, or displaying digital menus, this signage delivers exceptional performance tailored to your goals.

Environmentally Friendly and Energy Efficient

Designed with energy efficiency in mind, the signage minimizes power consumption without compromising performance, contributing to sustainable business practices.

Elevate your advertising efforts with this 27.6-inch HD intelligent digital signage. Combining advanced features with customizable options and a premium build, it offers a cutting-edge solution for effective communication and branding.