

8K Android TV Box with High-Speed Performance and Storage

Specifications

Model No.	Amlogic S928X-J 8K Android TV Box
CPU	Amlogic S928X-J ARM Cortex-A76+Quad-Core ARM Cortex-A55
GPU	ARM Mali-G57 MC2, 4K GUI OpenGL ES 3.2, Vulkan 1.2 and OpenCL 2.0
NPU	3.2 TOPS
RAM	64-bit DDR4, LPDDR4/4X UP to 8GB DDR4266
eMMC	eMMC 5.1, SLC NAND Flash
Decoding resolution	Amlogic Video Engine (AVE) with dedicated hardware decoders and encoders Decoding AV1 MP-10 @ L6.1 up to 8Kp60 VP9 Profile-2 @ 6.1 up to 8Kp60 H.265 HEVC MP-10 @ L6.1 up to 8Kp60 AVS3 Phase 1 up to 8Kp60 AVS2-P2 Profile up to 8Kp60 H.264 AVC HP @ L5.2 up to 4Kp60 MPEG-4, WMV/VC-1, AVS, MPEG-2, MPEG-1 up to 1080p60 MJPEG and JPEG unlimited pixel resolution decoding (ISO/IEC-10918) Support multi-video decoder up to 4x 4Kp60 Encoding JPEG image encoding up to 4Kp60 H.265 video encoding up to 4Kp60 with low latency H.264 video encoding up to 4Kp60 with low latency 8th Generation Advanced Amlogic TruLife Image Engine with support for Dolby Vision (optional), HDR10+, HDR10, HLG, and HDR Vivid processing
AI accelerator	Up to 3.2 TOPS Neural Network Accelerator (NNA) with Tensor Processing Unit (TPU) architecture, supports TensorFlow and Caffe
Video output	HDMI 2.1a transmitter including both controller and PHY supporting CEC, Dynamic HDR, and HDCP 2.2/2.3, up to 8Kp60 max resolution output with support for eARC, VRR, QMS, QFT, ALLM, DSC & SBTM Support for MP3, AAC, WMA, RM, FLAC, Ogg Vorbis, Opus, SRS TruVolume, Dolby Audio (optional), DTS (optional), and programmable with 7.1/5.1 down-mixing Low-power VAD
Audio output	Built-in SPDIF input/output up to 192KHz 16/24/32bit stereo 3x built-in TDM/PCM/I2S ports with TDM/PCM mode up to 48kHz x 32bits x 32ch or 192kHz x 16bits x 16ch and I2S mode up to 384kHz x 32bits x 16ch Digital microphone PDM input with programmable CIC, LPF, HPF, support up to 8 DMICs Built-in stereo audio DAC
Network interface	10/100/1000 MAC
USB2.0 interface	1x USB XHCI OTG 2.0, 2x USB 2.0 host, 1x USB 3.0 (5 Gbps) multiplexed with PCIe 2.0

S928X



* Supported configuration: PCIe 2.0 port + USB 2.0 Host, or USB3.0 port without PCIe.





YB910_428_V1.0 23082
JSY-3
94V0
E343782
2309

DDR0

DDR1

VDD_DDR

G5080CC
G-8481
R145

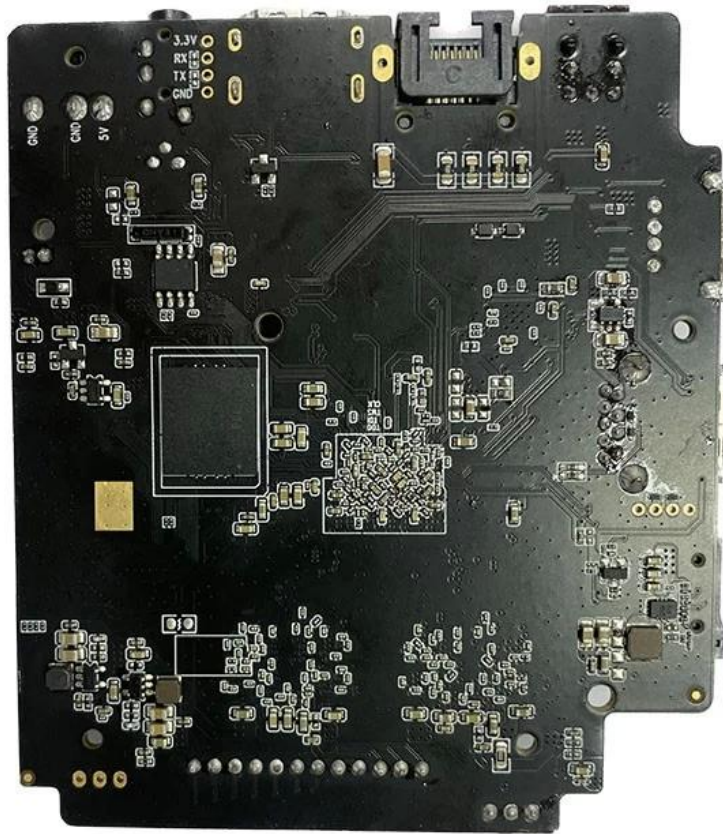
HDMI

Audio

TF_CARD



220
16V



The **8K Android TV Box with High-Speed Performance and Storage** is a top-tier device crafted for tech enthusiasts seeking the ultimate home entertainment experience. Featuring cutting-edge technology, this TV box provides exceptional speed, expansive storage, and stunning 8K resolution for seamless streaming and enhanced functionality.

Unparalleled 8K Visuals

Enjoy a cinematic experience with **8K ultra-HD resolution**, which delivers crystal-clear visuals and lifelike colors. Whether you're streaming movies, gaming, or browsing multimedia content, this TV box ensures an immersive and vibrant display. It supports HDR10+ for deeper contrast and enhanced brightness, making every scene more captivating.

High-Speed Performance

Powered by a **high-performance processor** and equipped with a **dedicated GPU**, the 8K Android TV Box ensures lightning-fast operation. It handles multitasking effortlessly, allowing users to switch between apps, stream high-definition content, and run demanding applications without lag. The

optimized Android OS further enhances performance by offering smooth navigation and quick access to a vast range of apps.

Ample Storage Capacity

With **large internal storage** and expandable memory options, this TV box provides ample space for downloading apps, games, and media files. Its high-speed storage ensures rapid read and write speeds, reducing loading times and enhancing overall performance.

Advanced Connectivity Features

This device supports **dual-band WiFi** and **Bluetooth**, ensuring fast and stable wireless connections. Multiple ports, including **HDMI, USB, and Ethernet**, allow seamless integration with various peripherals and home theater systems. The TV box is compatible with voice control, making it easier to search content, control playback, and access smart home features.

Optimized for Entertainment

The TV box is preloaded with the latest Android OS, granting access to **popular streaming platforms**, gaming apps, and productivity tools. Users can enjoy a personalized entertainment experience with easy app management, customizable settings, and regular software updates.

Energy Efficiency and Durability

Engineered for long-lasting performance, the device is built with energy-efficient components that minimize power consumption. Its durable design ensures reliable operation, making it a smart investment for continuous use in home entertainment setups.

Versatile Applications

The **8K Android TV Box** is not limited to streaming; it also supports advanced features such as:

- **Gaming:** Enjoy lag-free gaming with high-quality graphics and responsive controls.
- **Video Conferencing:** Connect with colleagues, friends, or family using compatible apps.
- **Smart Home Control:** Manage IoT devices directly from the TV box.
- **Educational and Professional Use:** Access online courses, productivity tools, and presentations effortlessly.

Easy Setup and User-Friendly Interface

Setting up the TV box is a breeze with its intuitive interface and plug-and-play functionality. The on-screen setup guide walks users through configuration, ensuring a hassle-free experience. Its responsive remote control and optional keyboard support further simplify navigation.

Why Choose This TV Box?

The **8K Android TV Box with High-Speed Performance and Storage** stands out as an all-in-one entertainment hub. Its robust features, sleek design, and reliable performance make it an ideal choice for users seeking the best in home entertainment technology.

Conclusion

With its high-speed performance, expansive storage, and unparalleled 8K visuals, this Android TV box redefines home entertainment. Whether for streaming, gaming, or productivity, it offers unmatched versatility, ensuring an enjoyable and dynamic user experience.