

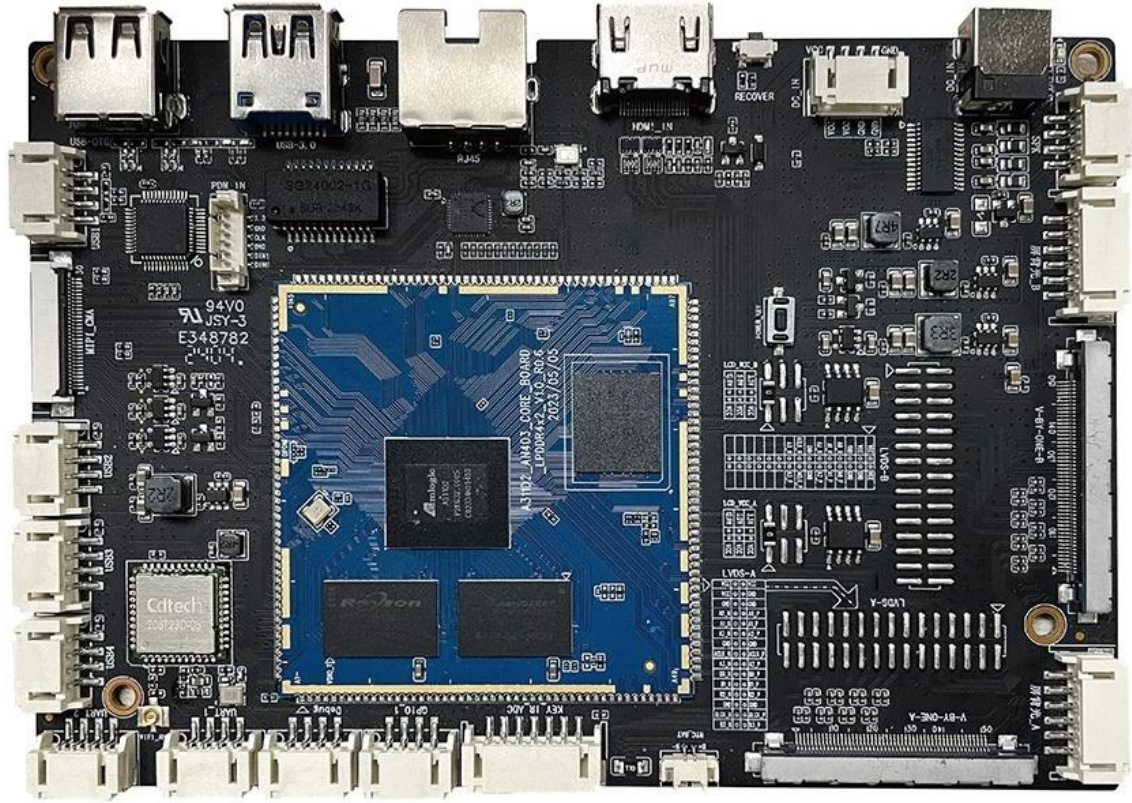
# Amlogic A311D2 Digital Signage

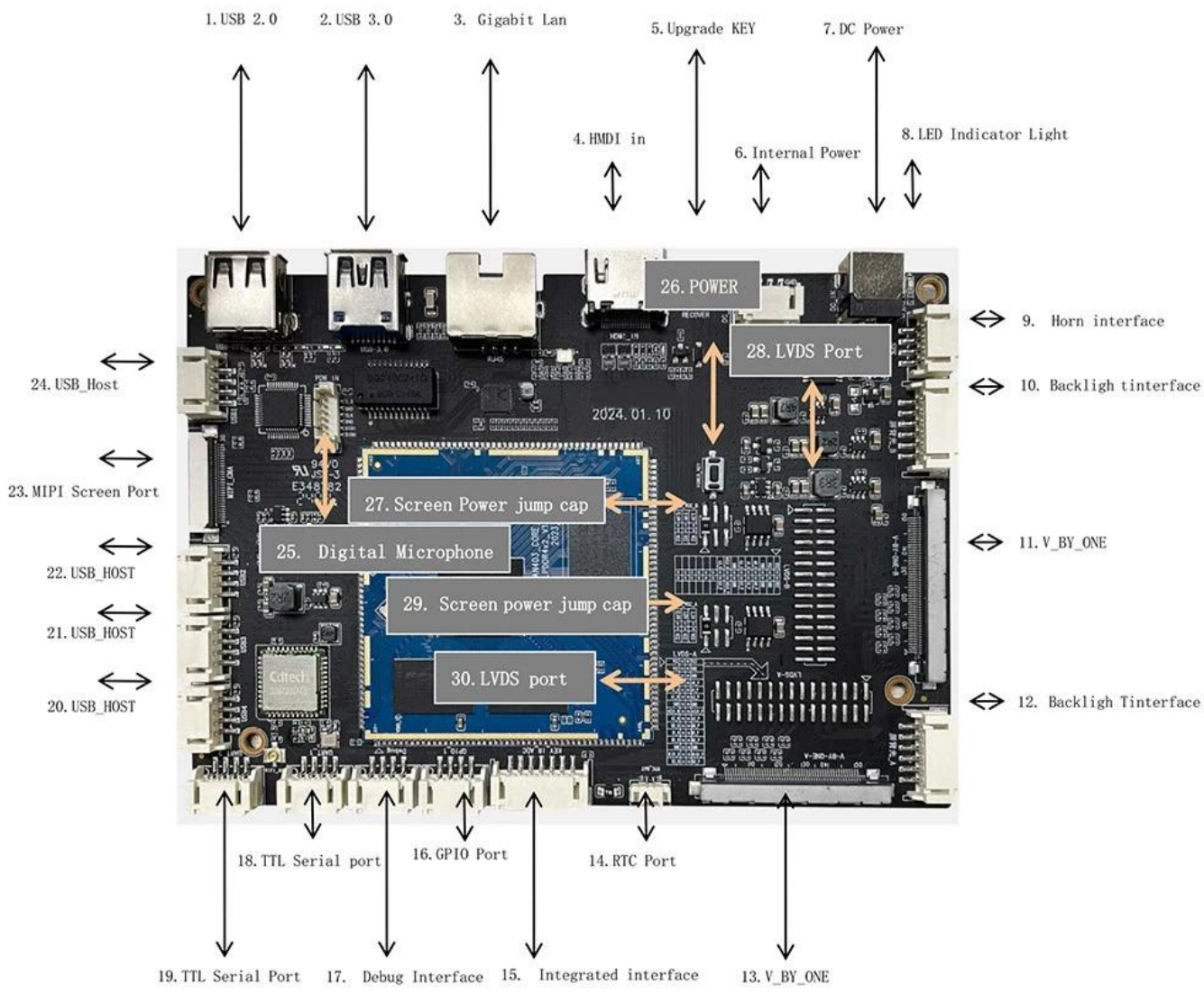
## Specifications

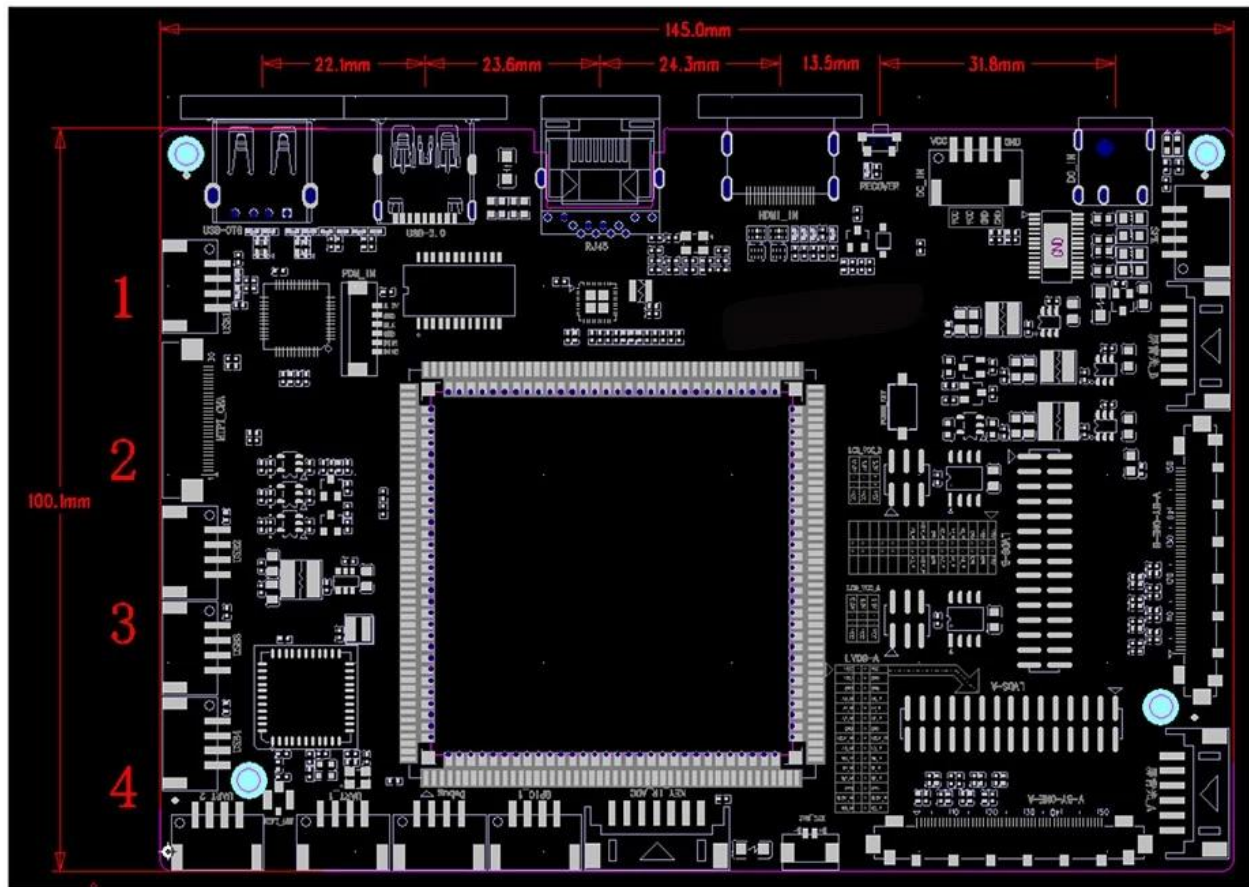
Model No.	Amlogic A311D2 Digital Signage
CPU	Amlogic A311D2 Quad Core ARM Cortex-A73+ Quad Core Cortex-a53 Main Frequency up to2.0GHz
GPU	ARM Mali-G52 MC4 (2EE), OpenGL ES 3.2, Vulkan 1.1 and OpenCL 2.0
RAM	4GB (LPDDR4)
ROM	8GB (16GB/32GB/64GB Optional, Maximum128G)
OS	Android 13
Wi-Fi / BT	2.4G WiFi, BT5.2

## I/O Port

HDMI In	Support HDMI 2.1 3840*2160@60Hz in
LVDS A output	Supports LCD Cropping Screens of Various Sizes and Resolutions, with a Resolution of 1280*800 (Screen Power Supply: 12V/5V/3.3V)
LVDS B output	Supports LCD Cropping Screens of Various Sizes and Resolutions, with a Resolution of 2560*1600(Screen Power Supply: 12V/5V/3.3V)
V-BY-ONE A/Bway out	Supports LCD Cropping Screens of Various Sizes and Resolutions, with a Resolution of 2560*1600 (Screen Power Supply: 12V/5V/3.3V)
Audio and Video Output	Left and Right Channel Output, Built-in Dual 8Ω/9W Power Amplifiers
RTC Real-time Clock	Timer Power On/Off
	2*Simulated MIC Input
	1*USB OTG
	1*USB 3.0
	4*USB
Output Interface	2*TTL Available Serial Ports
	2*12V Power Interface (DC Socket and 4PIN_2.0 Spacing Socket)
	1*RTC Power Interface
	Gigabit Adaptive Ethernet Port
	2*Backlight Interface
	1*Integrated Interface(1*On/Off Button 2*ADC key/LED/IR_IN Port)
Upgrade Size	Support Local USB Upgrade 145mm*100mm







Amlogic A311D2 Digital Signage belongs to the Android smart motherboard and is generally suitable for smart display terminal products, video terminal products, industrial automation terminal products, and is generally suitable for advertising machines, digital signage, intelligent self-service terminals, intelligent retail terminals, O2O smart devices, industrial control hosts, educational equipment, robot devices, etc.

Amlogic A311D2 Digital Signage motherboard A311D2 Quad core ARM cortex-A73+ Quad core Cortex-a53 with advanced 12nm process technology, high-performance, low-power, and high-speed cache application processor. The GPU is supported by ARM Mali-G52 MC4 (2EE), OpenGL ES 3.2, Vulkan 1.1 and OpenCL 2.0. The motherboard is equipped with the Android 13 system, with a main frequency of up to 2.0GHz and excellent performance.

### Product features

- \*Specially designed for self-service terminals, standard board type, suitable for various structures.
- \*The onboard standard HDMI in interface, double LVDS, double EDP, and double V\_BY\_ONE

interfaces ,Independent dual backlight, supporting 4K dual screen display and support a maximum decoding LCD display of 3840x2160, and support cropping screens of various sizes and resolutions.

- \*Supports wired networks 1000M and WiFi/Bluetooth modules.
- \*Rich expansion interfaces:6-way USB interface (1-way otg2.0,1-way USB 3.0, 4-way reserved interfaces,2-way standard USB, Multi-way GPIO interface etc., can meet the access requirements of various peripherals in the market.
- \*Support Android system customization, provide system call API reference code, and perfectly support the development of upper level application apps for customers.
- \*Perfect support for various mainstream touch screens such as infrared, optical, capacitive, resistive, and touch film.
- \*Easy to operate and maintain.

The Amlogic A311D2 Digital Signage Player is a premium choice for delivering impactful digital signage solutions. Leveraging the advanced Amlogic A311D2 chipset, this device offers an Octa Core ARM Cortex processor and is engineered to deliver exceptional graphics and multimedia performance, making it ideal for high-definition signage in commercial settings. It supports up to 4K UHD resolution, ensuring content is displayed with vibrant colors, crisp details, and smooth motion, perfect for capturing the attention of passersby.

Designed for dynamic environments, this digital signage player goes beyond standard playback by incorporating AI-powered features that bring intelligent content management and analytics to the forefront. This capability allows businesses to streamline content scheduling, automate updates, and gather real-time insights into customer engagement. By analyzing viewer behavior, the device helps tailor content delivery to maximize impact, making it a powerful tool for enhancing marketing efforts and improving user experience in environments such as retail, restaurants, airports, and corporate offices.

Connectivity options are robust and flexible, allowing for integration with various display setups. It includes HDMI, USB, Ethernet, and WiFi connections, making installation and setup simple and adaptable to different display requirements. The Ethernet and WiFi capabilities support remote content management, giving operators the flexibility to update signage content from anywhere, a vital feature for managing multiple display locations efficiently. Additionally, with USB ports and expandable storage options, the device can hold a substantial library of media files, allowing for local content storage in situations where network connectivity may be limited.

In terms of video and image processing, the Amlogic A311D2 chipset is designed to handle multiple video formats, including H.265 video decoding, ensuring smooth, high-quality playback even when handling complex media files. This makes it suitable for displaying high-resolution promotional videos, rotating image galleries, interactive content, or multi-screen displays that demand reliable performance. The digital signage player also features energy-efficient operation, which is a valuable advantage for businesses running displays continuously in high-traffic areas.

With its versatility and high-performance hardware, the Amlogic A311D2 Digital Signage Player is an excellent choice for businesses seeking a comprehensive, AI-enabled signage solution. It meets the demands of high-definition digital advertising while offering advanced features that optimize content delivery and engage viewers effectively. Ideal for a variety of applications, including point-of-sale displays, information kiosks, and interactive installations, this signage player provides a reliable, future-ready solution for any business aiming to enhance its visual communications and strengthen its brand presence.