

Amlogic S928X-J 8K Streaming Media Player with Wi-Fi 6E: Ultimate Home Theater Experience

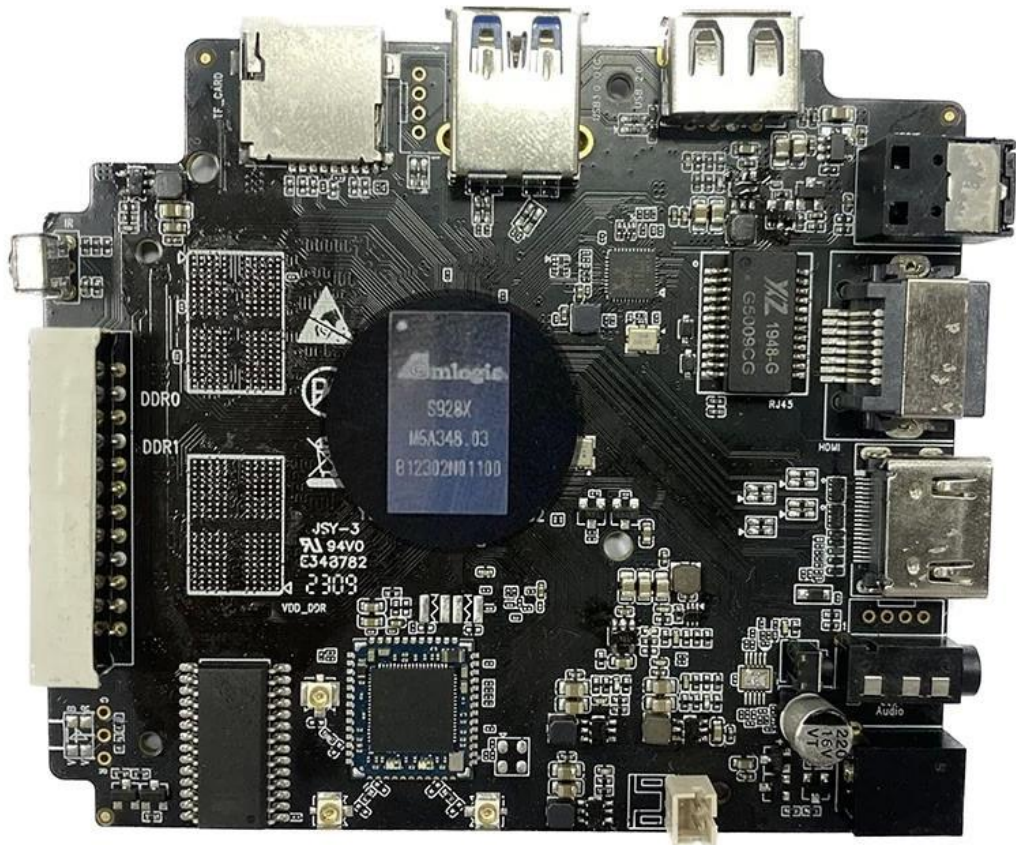
Specifications

Model No.	Amlogic S928X-J Streaming Media Player
CPU	Amlogic S928X-J ARM Cortex-A76+Quad-Core ARM Cortex-A55
GPU	ARM Mali-G57 MC2, 4K GUI OpenGL ES 3.2, Vulkan 1.2 and OpenCL 2.0
NPU	3.2 TOPS
RAM	64-bit DDR4, LPDDR4/4X UP to 8GB DDR4266
eMMC	eMMC 5.1, SLC NAND Flash
Decoding resolution	Amlogic Video Engine (AVE) with dedicated hardware decoders and encoders Decoding AV1 MP-10 @ L6.1 up to 8Kp60 VP9 Profile-2 @ 6.1 up to 8Kp60 H.265 HEVC MP-10 @ L6.1 up to 8Kp60 AVS3 Phase 1 up to 8Kp60 AVS2-P2 Profile up to 8Kp60 H.264 AVC HP @ L5.2 up to 4Kp60 MPEG-4, WMV/VC-1, AVS, MPEG-2, MPEG-1 up to 1080p60 MJPEG and JPEG unlimited pixel resolution decoding (ISO/IEC-10918) Support multi-video decoder up to 4x 4Kp60 Encoding JPEG image encoding up to 4Kp60 H.265 video encoding up to 4Kp60 with low latency H.264 video encoding up to 4Kp60 with low latency 8th Generation Advanced Amlogic TruLife Image Engine with support for Dolby Vision (optional), HDR10+, HDR10, HLG, and HDR Vivid processing
AI accelerator	Up to 3.2 TOPS Neural Network Accelerator (NNA) with Tensor Processing Unit (TPU) architecture, supports TensorFlow and Caffe
Video output	HDMI 2.1a transmitter including both controller and PHY supporting CEC, Dynamic HDR, and HDCP 2.2/2.3, up to 8Kp60 max resolution output with support for eARC, VRR, QMS, QFT, ALLM, DSC & SBTM Support for MP3, AAC, WMA, RM, FLAC, Ogg Vorbis, Opus, SRS TruVolume, Dolby Audio (optional), DTS (optional), and programmable with 7.1/5.1 down-mixing Low-power VAD
Audio output	Built-in SPDIF input/output up to 192KHz 16/24/32bit stereo 3x built-in TDM/PCM/I2S ports with TDM/PCM mode up to 48kHz x 32bits x 32ch or 192kHz x 16bits x 16ch and I2S mode up to 384kHz x 32bits x 16ch Digital microphone PDM input with programmable CIC, LPF, HPF, support up to 8 DMICs Built-in stereo audio DAC
Network interface	10/100/1000 MAC
USB2.0 interface	1x USB XHCI OTG 2.0, 2x USB 2.0 host, 1x USB 3.0 (5 Gbps) multiplexed with PCIe 2.0

S928X



* Supported configuration: PCIe 2.0 port + USB 2.0 Host, or USB3.0 port without PCIe.





YB910_428_V1.0 23082
JSY-3
94V0
E343782
2309

DDR0

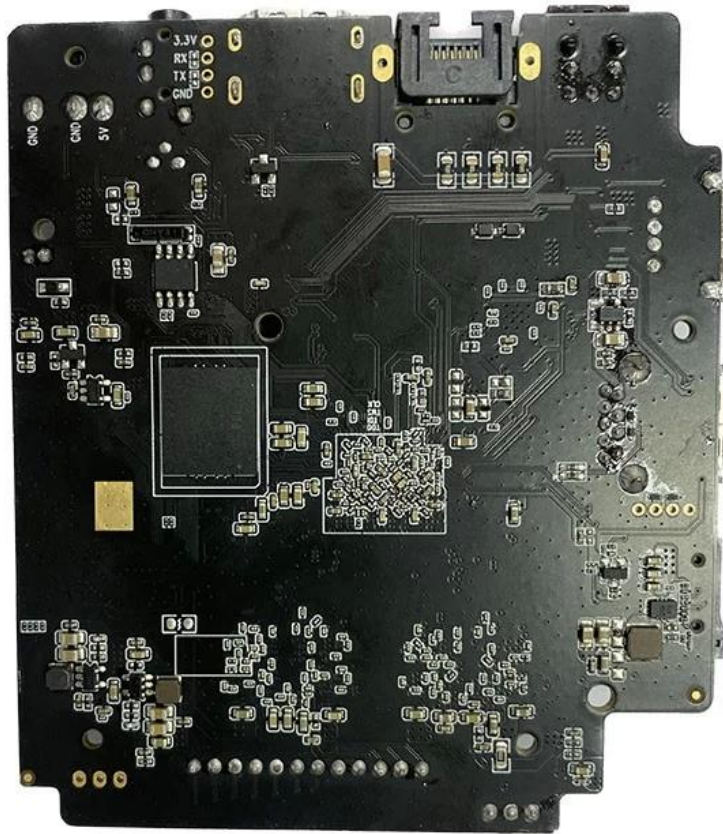
DDR1

VDD_DDR

G5000CC
94V0
R145

HDMI

220
16V
Audio



Amlogic S928X-J is the first 8K UHD smart STB SoC integrating ARM Cortex-A76, ARM Cortex-A55 and self-developed neural network processor. It supports 8Kp60 video decoding function of global mainstream video formats—AV1, H.265, VP9, AVS3, AVS2, etc. Meanwhile, 4K GUI, intelligent SR and other functions are viable as well, thus providing an outstanding hardware engine for customized high-end applications.

As the demand for high-performance multimedia entertainment continues to rise, Amlogic has once again delivered an innovative solution with the launch of its latest S928X-J chip. Designed to deliver a seamless, immersive multimedia experience, the S928X-J chip boasts a range of impressive features that are sure to impress tech enthusiasts and consumers alike.

One of the key selling points of the S928X-J chip is its powerful processing capabilities. The chip is equipped with an eight-core ARM Cortex-A53 CPU, which provides lightning-fast speeds and delivers exceptional performance for a wide range of multimedia applications. Whether you're streaming 4K content, playing high-definition games, or running multiple apps at once, the S928X-J chip ensures that you enjoy a smooth and uninterrupted experience.

Another standout feature of the S928X-J chip is its support for high-quality audio and video output. The chip supports up to 4K resolution at 60 frames per second, which means that you can enjoy your favorite movies and TV shows with breathtaking clarity and detail. Additionally, the chip supports HDR10 and HLG technologies, which provide a wider color gamut and better contrast, making your viewing experience more immersive than ever before.

The S928X-J chip is also designed to deliver a high-quality gaming experience. The chip is equipped with a powerful Mali-G31 MP2 GPU, which provides exceptional graphics performance and supports OpenGL ES3.2, Vulkan 1.1, and OpenCL 2.0. This means that you can play the latest games with stunning graphics and enjoy smooth, lag-free gameplay.

In addition to its impressive hardware specs, the S928X-J chip also features advanced software optimizations that enhance its performance and usability. The chip is based on the Android TV 10 operating system, which provides a user-friendly interface and access to a wide range of apps and content. The chip also supports Google Assistant, which allows you to control your TV and other connected devices with your voice.

The S928X-J chip is also designed with connectivity in mind. The chip supports dual-band Wi-Fi and Bluetooth 5.0, which ensure fast and reliable wireless connectivity. It also features a range of ports, including HDMI, USB, and Ethernet, which provide flexible connectivity options for a wide range of devices and peripherals.

Overall, the Amlogic S928X-J chip is a game-changing solution for high-performance multimedia entertainment. Its powerful processing capabilities, support for high-quality audio and video output, and advanced software optimizations make it a standout choice for tech enthusiasts and consumers who demand the best in multimedia entertainment. Whether you're streaming your favorite content, playing games, or using your TV for other applications, the S928X-J chip ensures that you enjoy a seamless, immersive experience.

The 8K [Android TV Box](#) with Amlogic S928X-J is the ultimate high-performance media player that brings your TV to life. It is a smart TV box that features dual-band Wi-Fi and HDR support, giving you seamless access to all your favorite streaming apps and services in stunning 8K resolution. With USB 3.0 and Bluetooth 5.0, you can easily connect your external devices and enjoy your media on the big screen. Whether you want to watch movies, TV shows, play games or browse the web, this TV box has got you covered.

Step into the future of entertainment with our Amlogic S928X-J 8K Android TV Box featuring Wi-Fi 6E. Immerse yourself in stunning visuals and seamless streaming. This Android TV Box delivers 8K brilliance, elevating your viewing experience. With advanced Wi-Fi 6E technology, enjoy fast and reliable connectivity. Explore a new dimension of entertainment with this powerful and feature-packed Android TV Box. Order now and redefine the way you experience TV!

The Amlogic S928X-J 8K [Streaming Media Player](#) with Wi-Fi 6E is a cutting-edge device that redefines home entertainment. At the heart of this media player is the powerful Amlogic S928X-J chipset, designed to handle the most demanding 8K Ultra HD content with ease. This advanced processor ensures that you experience stunning visuals with vibrant colors, sharp contrasts, and unmatched clarity, bringing every scene to life in your living room.

One of the most impressive aspects of this media player is its support for 8K resolution. As 8K content becomes more widely available, the Amlogic S928X-J ensures that you can enjoy it in its full

glory. With four times the resolution of 4K, 8K Ultra HD offers an incredibly detailed and immersive viewing experience. Whether you're watching the latest blockbuster, streaming a nature documentary, or playing a high-definition game, this media player delivers every frame with precision and realism.

In addition to its exceptional visual capabilities, the Amlogic S928X-J media player is equipped with Wi-Fi 6E technology. This next-generation wireless connectivity operates on the 6GHz band, providing faster data transfer speeds, lower latency, and more stable connections. Wi-Fi 6E is particularly beneficial in environments with multiple connected devices, ensuring that your streaming experience remains smooth and uninterrupted, even when other household members are using the network. This means you can enjoy high-quality 8K streaming without buffering, engage in online gaming with minimal lag, and download large files quickly and efficiently.

The media player is designed with user-friendliness in mind. It features an intuitive interface powered by the latest Android operating system, allowing for easy navigation and access to a vast array of apps and services. Whether you're streaming from popular platforms like Netflix, Hulu, or Disney+, or exploring the latest games and apps from the Google Play Store, the Amlogic S928X-J provides a seamless and responsive user experience. The Android OS also ensures that your device stays updated with the latest features and security patches, keeping your entertainment experience smooth and secure.

Connectivity options are another strong point of the Amlogic S928X-J 8K Streaming Media Player. It includes HDMI 2.1 for optimal video output, multiple USB ports for connecting external storage or peripherals, and an Ethernet port for wired internet connections. These features make it easy to integrate the media player into your existing home theater setup, whether you're connecting to a surround sound system, a gaming console, or other devices. The versatility of this media player allows you to customize your entertainment experience according to your preferences.

The design of the Amlogic S928X-J media player is sleek and modern, making it a stylish addition to any entertainment center. Despite its compact size, the device is packed with powerful hardware and advanced features that deliver a high-performance experience. The media player is also easy to set up and operate, making it accessible to users of all technical levels.

In summary, the Amlogic S928X-J 8K Streaming Media Player with Wi-Fi 6E is a top-of-the-line device that brings the ultimate home theater experience to your fingertips. With its powerful chipset, support for 8K Ultra HD content, and cutting-edge Wi-Fi 6E connectivity, it offers everything you need for a superior entertainment experience. Whether you're a movie enthusiast, a gamer, or someone who simply enjoys high-quality streaming, this media player is an essential addition to your home entertainment system, offering performance, reliability, and an immersive viewing experience that is second to none.