

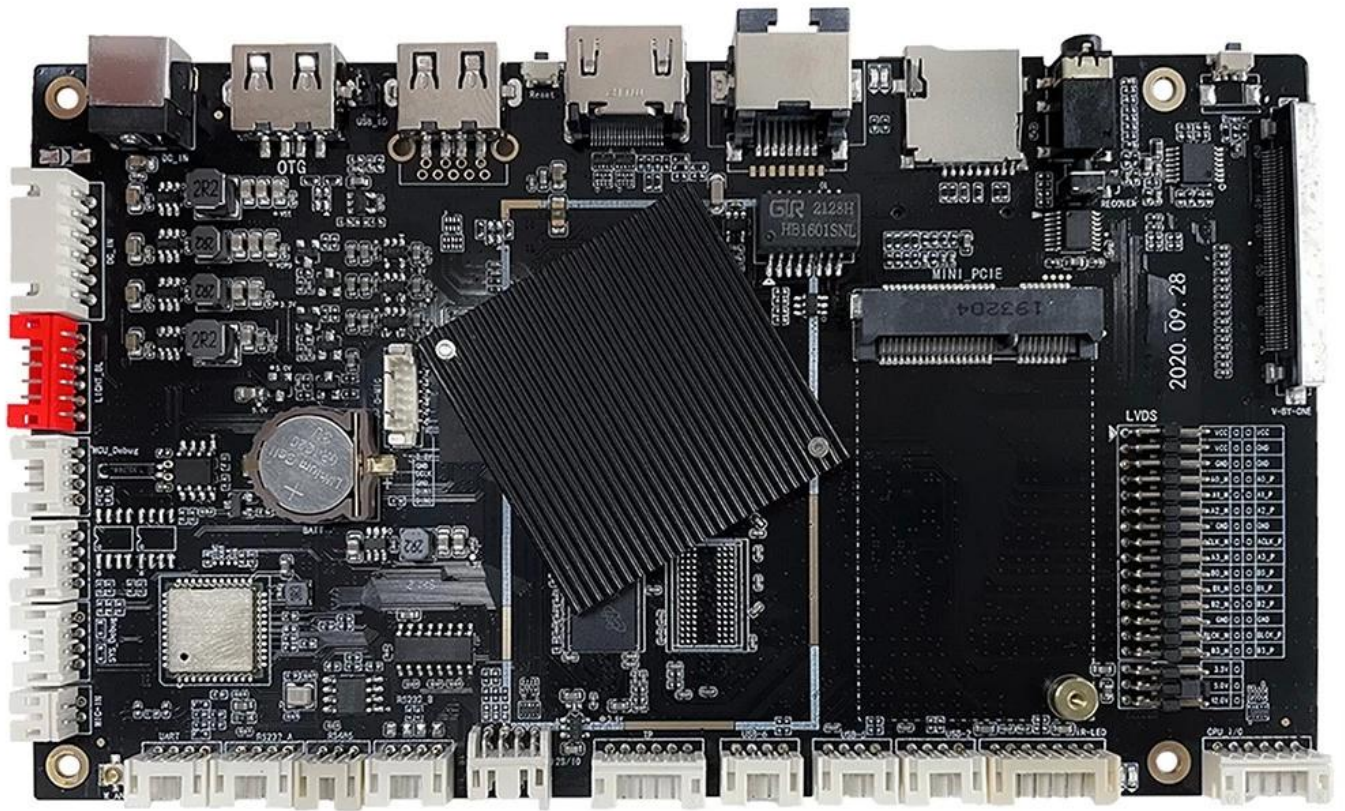
# Amlogic T972 Quad Core 4K Digital Signage

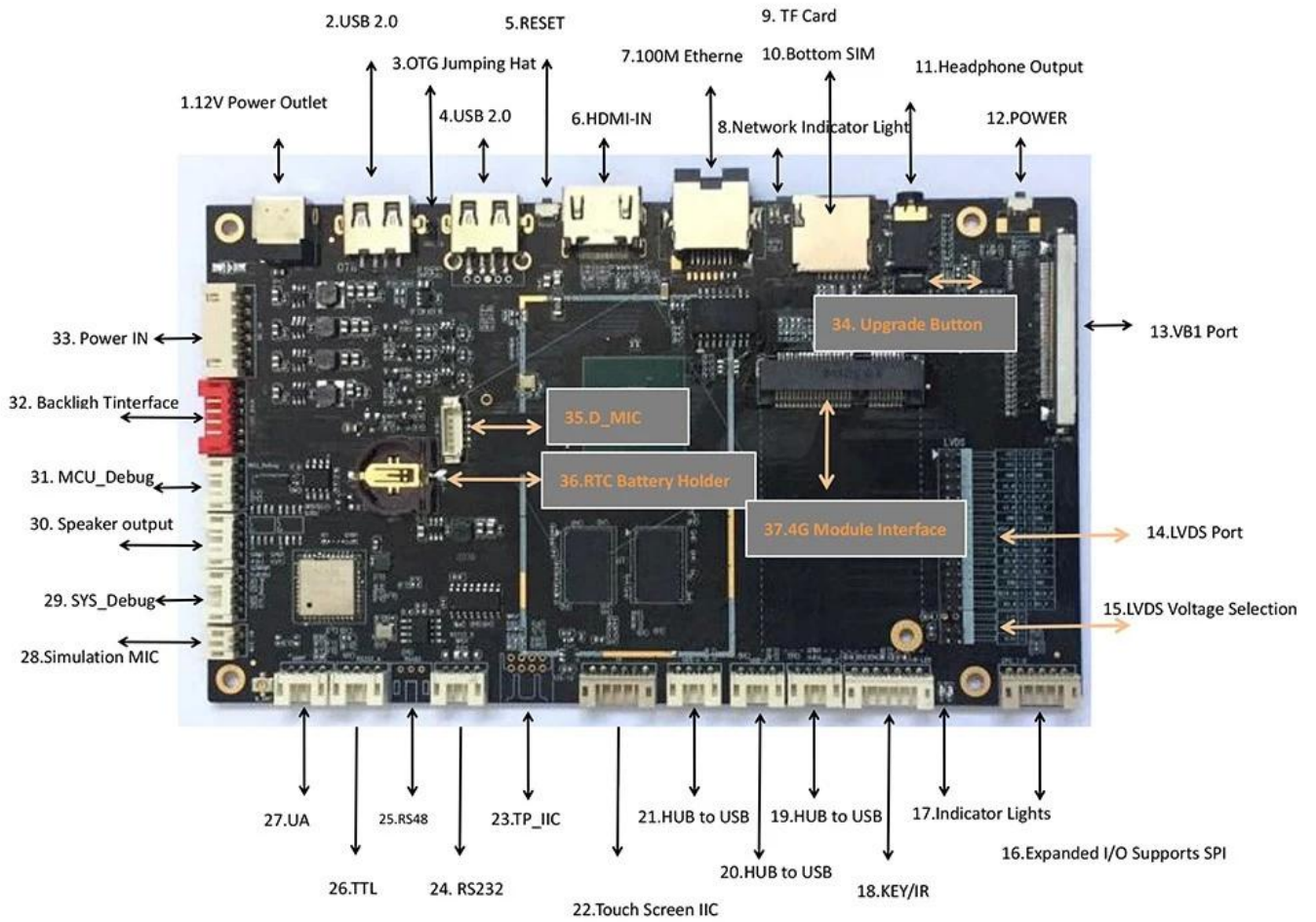
## Specifications

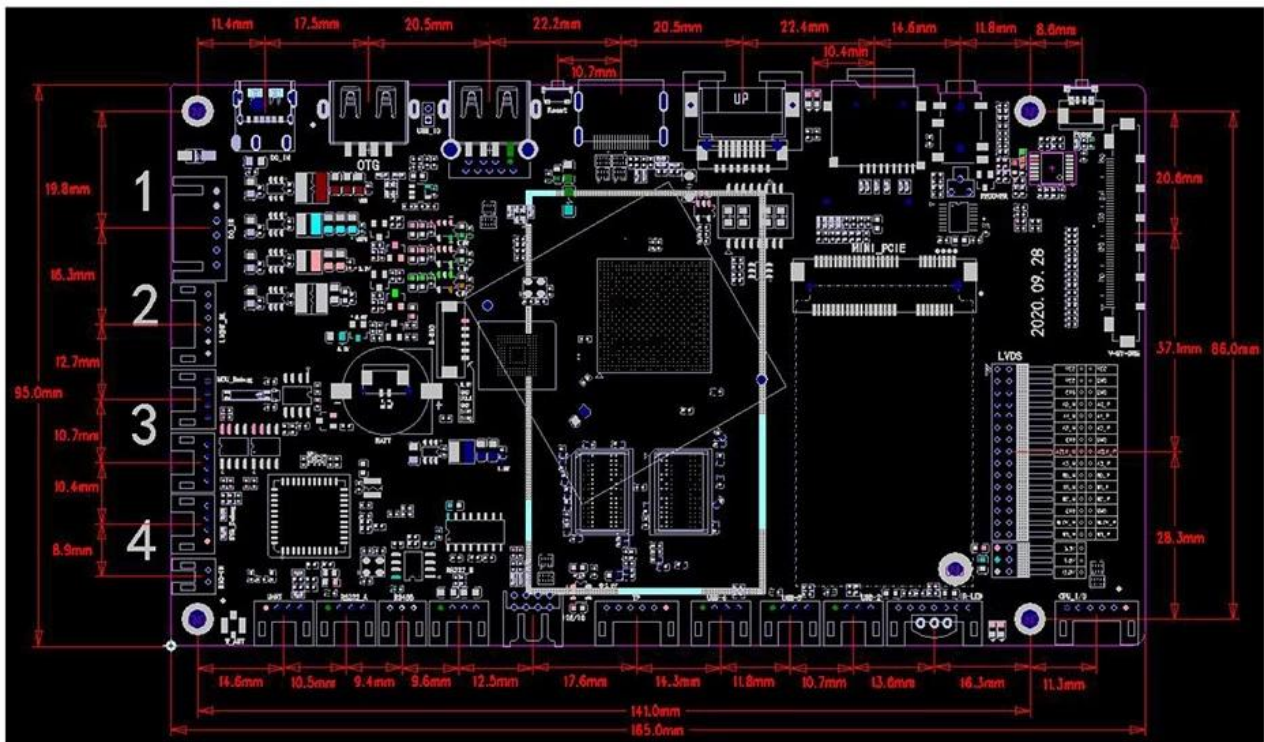
Model No.	Amlogic T792 Digital Signage
CPU	Amlogic T972 Quad Core ARM Cortex A55 1.98GHZ
GPU	Penta Core ARM Mail-450
RAM	2GB
ROM	4GB (16GB/32GB/64GB Optional)
OS	Android 9.0
Wi-Fi / BT	2.4Ghz (2.4G/5G Optional); BT4.2

## I/O Port

LVDS Output	1 Single/Dual Channel, Drive 50/60Hz LCD Screen
V-BY-ONE Out	4K*2K@60Hz
Standard Screen Backlight Control Interface	12V, Enable, PWM Dimmer;
USB2.0	1*USB OTG, 1*USB2.0 A 3*USB Port
Serial Port	4 Serial Ports (including 1 way 232, 1 way TTL, 1 way 485, 1 way UART)
Area Backlight	SPI
HDMI Input	1pc, HDMI 2.1 4K*2K@60Hz Input
Audio/Video Output	Left/Right Channel Output, Built-in Dual 4Ω/15W Power Amplifier
MIC Input	One Analog MIC Input, Reserved 4 Digital MIC Inputs in PDM Array
Earphone	1 PC
4G	Mini PCI-E 4G
TP/touch Screen Interface	1 way I <sup>2</sup> C Touch Screen Interface
Other Expansion Interfaces	Multipath IO Interface, SPI, ADC and Button Interface
Ethernet	10/100M Fast Ethernet RJ45 Port
RTC	Support
Upgrade	Support Local USB And OTA Upgrade
Size	125mm*80mm







PCB : 4-layer board  
 Size : 165mm\*95mm, Thickness 1.2mm  
 Screw hole specifications :  $\Phi 3.0\text{mm} \times 4$

Amlogic T792 belongs to the Android smart motherboard, which is generally applicable to smart display terminal products, video terminal products, industrial automation terminal products, such as: advertising machines, digital signage, smart self-service terminals, smart retail terminals, O2O smart devices, industrial control hosts, educational equipment, Robot equipment, etc.

Amlogic T972 chipset, quad-core Cortex-A55 processor, clocked at up to 1.9 GHz; uses Mali-G31 GPU; supports 4K, H.265 hard decoding; equipped with Android 9.0 system; supports multiple video output and input; Abundant peripheral interfaces, support a variety of peripheral expansion; ultra-low power consumption, super performance, is the best choice for commercial display, human-computer interaction, and industrial control projects.

### 1.3Feathers

- ◆ Designed for self-service terminals, standard ultra-thin board type, suitable for various structures.
- ◆ Onboard HDMI IN/V-By-One / LVDS and other input and output interfaces.
- ◆ Support LAN, WiFi, 4G access, support a variety of PCI-E 3G/4G modules, support IoT cards or ordinary data cards.
- ◆ Rich extended interface. 5 USB ports (3 pins, 2 standard USB 2.0), 3 expandable serial ports (1 RS232 serial port, 1 3.3V TTL serial port, 1pc 1.8V or 3.3V or 5V optional level 4-wire TTL serial port), multiple GPIO and ADC interfaces can meet the access requirements of various peripherals on the market.
- ◆ High definition: Maximum support 8K\*4K@24fps decoding and various LVDS/V-By-One interface LCD display screens, crop screens.
- ◆ Support Android system customization, provide system call interface API reference code, perfect support for customer upper-level application APP development.
- ◆ Perfectly support a variety of mainstream touch screens such as infrared, optical, capacitive, resistive, and touch film.
- ◆ Perfectly support a variety of mainstream touch screens such as infrared, optical, capacitive, resistive, and touch film.
- ◆ Easy to operate, simple and convenient operation and maintenance.

The **Amlogic T972 Quad Core 4K Digital Signage Player** redefines the standards of digital signage technology with its robust performance and versatile capabilities. Powered by the advanced Amlogic T972 processor, this player ensures seamless operation for demanding applications, offering an optimal balance of efficiency and power.

Designed for Ultra HD (4K) output, this signage player guarantees crisp, vibrant visuals that capture attention in any environment. The advanced video decoding capabilities, including support for H.265 and VP9 formats, provide smooth playback of high-resolution content while minimizing bandwidth and storage usage. This makes it an excellent choice for retail displays, corporate presentations, and large-scale advertising installations.

The T972's quad-core architecture enables quick data processing and multitasking, while its energy-efficient design ensures lower power consumption, contributing to environmentally friendly operations. Equipped with multiple connectivity options, including HDMI, USB, and Ethernet, the player ensures compatibility with various peripherals and networks. Additionally, support for WiFi connectivity allows for seamless remote updates and content management, providing convenience and flexibility for dynamic content delivery.

Running on a customizable Android platform, the Amlogic T972 Digital Signage Player offers an intuitive interface and access to a wide range of apps, enabling personalized and interactive user experiences. Its compact design allows for discreet installation, while the robust build quality ensures reliability in both indoor and outdoor setups.

Ideal for retail stores, transportation hubs, hospitality venues, and more, the Amlogic T972 Quad Core 4K Digital Signage Player is a versatile, future-proof solution for professional digital signage needs. Enhance your audience engagement with a product designed for performance, efficiency, and

scalability.