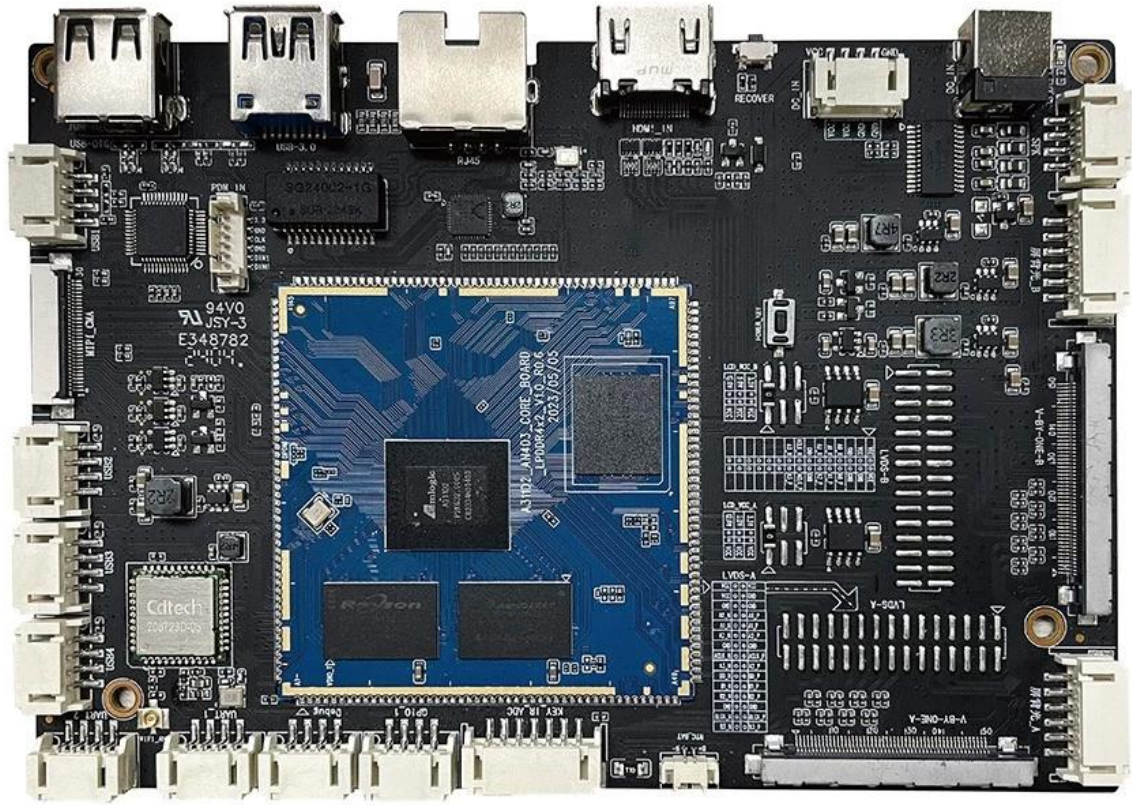
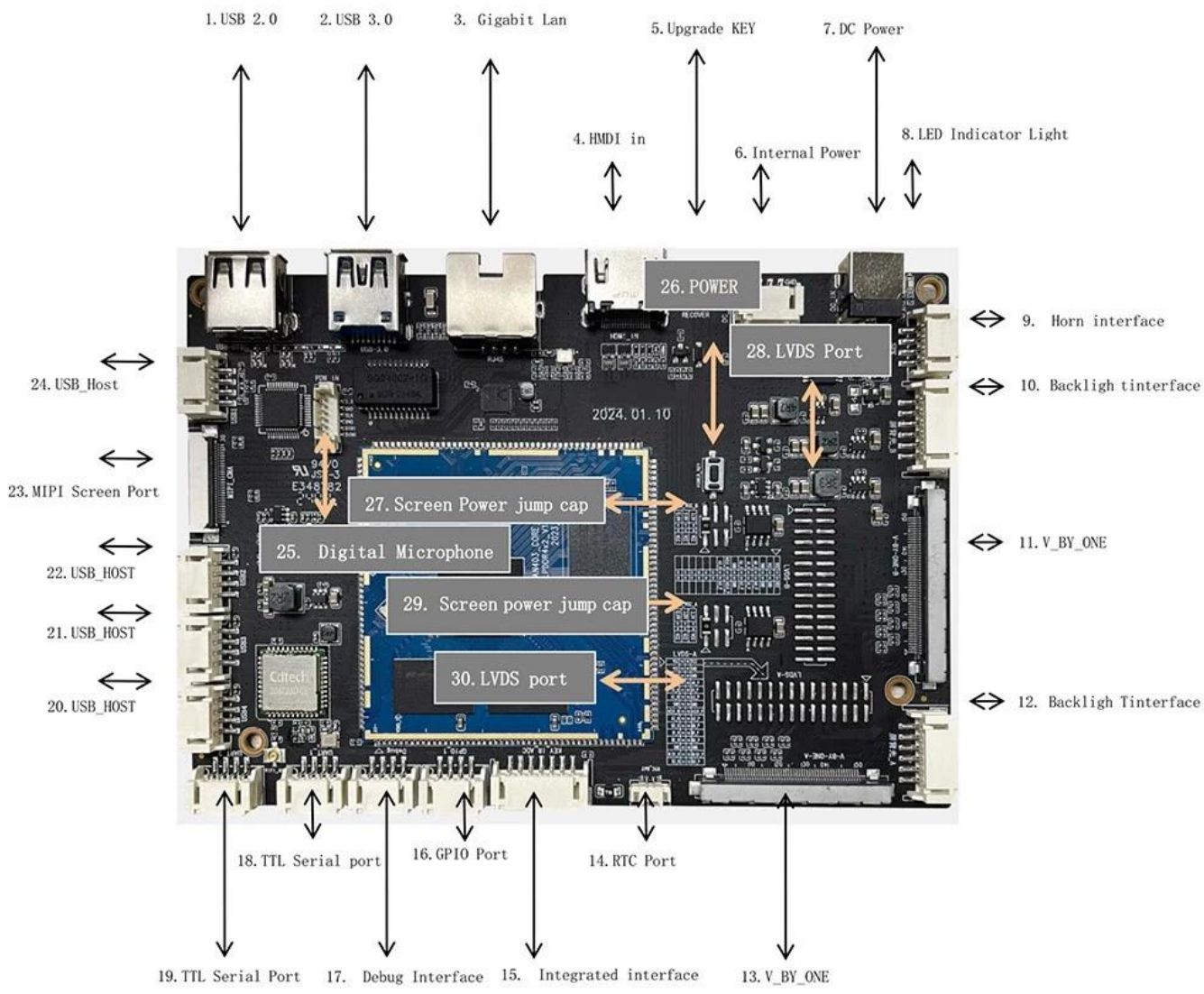
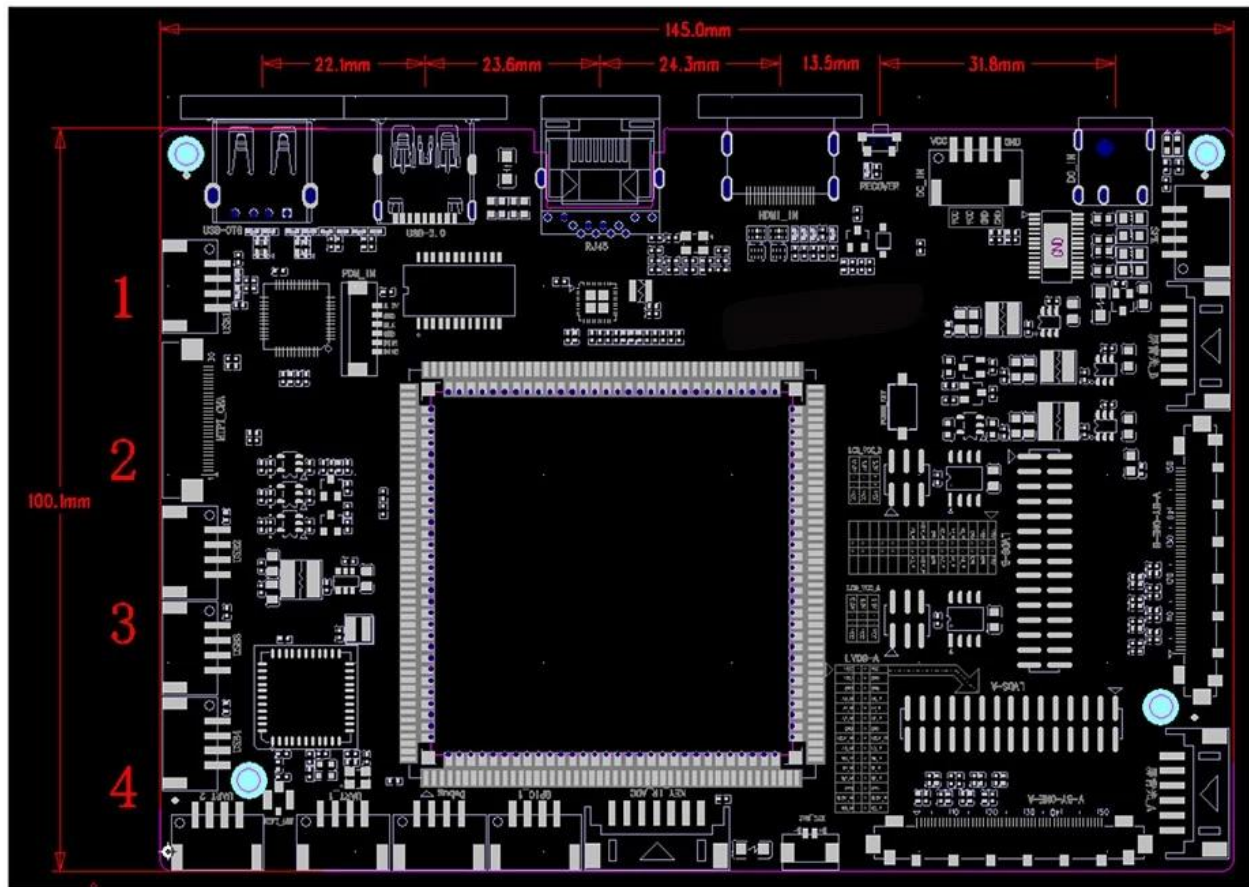


# Digital Signage Player Android 13 OS

Specifications	
Model No.	Amlogic A311D2 Digital Signage Media Player
CPU	Amlogic A311D2 Quad Core ARM Cortex-A73+ Quad Core Cortex-a53 Main Frequency up to2.0GHz
GPU	ARM Mali-G52 MC4 (2EE), OpenGL ES 3.2, Vulkan 1.1 and OpenCL 2.0
RAM	4GB (LPDDR4)
ROM	8GB (16GB/32GB/64GB Optional, Maximum128G)
OS	Android 13
Wi-Fi / BT	2.4G WiFi, BT5.2
I/O Port	
HDMI In	Support HDMI 2.1 3840*2160@60Hz in
LVDS A output	Supports LCD Cropping Screens of Various Sizes and Resolutions, with a Resolution of 1280*800 (Screen Power Supply: 12V/5V/3.3V)
LVDS B output	Supports LCD Cropping Screens of Various Sizes and Resolutions, with a Resolution of 2560*1600(Screen Power Supply: 12V/5V/3.3V)
V-BY-ONE A/Bway out	Supports LCD Cropping Screens of Various Sizes and Resolutions, with a Resolution of 2560*1600 (Screen Power Supply: 12V/5V/3.3V)
Audio and Video Output	Left and Right Channel Output, Built-in Dual 8Ω/9W Power Amplifiers
RTC Real-time Clock	Timer Power On/Off
Output Interface	2*Simulated MIC Input
	1*USB OTG
	1*USB 3.0
	4*USB
	2*TTL Available Serial Ports
Upgrade	2*12V Power Interface (DC Socket and 4PIN_2.0 Spacing Socket)
	1*RTC Power Interface
	Gigabit Adaptive Ethernet Port
Size	2*Backlight Interface
	1*Integrated Interface(1*On/Off Button 2*ADC key/LED/IR_IN Port)
Support Local USB Upgrade	
145mm*100mm	







Amlogic A311D2 Digital Signage belongs to the Android smart motherboard and is generally suitable for smart display terminal products, video terminal products, industrial automation terminal products, and is generally suitable for advertising machines, digital signage, intelligent self-service terminals, intelligent retail terminals, O2O smart devices, industrial control hosts, educational equipment, robot devices, etc.

Amlogic A311D2 Digital Signage motherboard A311D2 Quad core ARM cortex-A73+ Quad core Cortex-a53 with advanced 12nm process technology, high-performance, low-power, and high-speed cache application processor. The GPU is supported by ARM Mali-G52 MC4 (2EE), OpenGL ES 3.2, Vulkan 1.1 and OpenCL 2.0. The motherboard is equipped with the Android 13 system, with a main frequency of up to 2.0GHz and excellent performance.

### Product features

- \*Specially designed for self-service terminals, standard board type, suitable for various structures.
- \*The onboard standard HDMI in interface, double LVDS, double EDP, and double V\_BY\_ONE



interfaces ,Independent dual backlight, supporting 4K dual screen display and support a maximum decoding LCD display of 3840x2160, and support cropping screens of various sizes and resolutions.

- \*Supports wired networks 1000M and WiFi/Bluetooth modules.
- \*Rich expansion interfaces:6-way USB interface (1-way otg2.0,1-way USB 3.0, 4-way reserved interfaces,2-way standard USB, Multi-way GPIO interface etc., can meet the access requirements of various peripherals in the market.
- \*Support Android system customization, provide system call API reference code, and perfectly support the development of upper level application apps for customers.
- \*Perfect support for various mainstream touch screens such as infrared, optical, capacitive, resistive, and touch film.
- \*Easy to operate and maintain.

## **Digital Signage Player with Android 13 OS: The Next Level in Visual Communication**

As digital signage continues to evolve, businesses seek solutions that combine cutting-edge performance, versatility, and reliability. The **Digital Signage Player with Android 13 OS** emerges as the ideal tool for delivering stunning 4K Ultra HD content, ensuring impactful audience engagement across various sectors.

### **Advanced Android 13 Operating System**

At the core of this signage player is the latest Android 13 OS, which offers an intuitive and user-friendly interface. This operating system ensures compatibility with a wide range of apps, providing businesses with flexible content management options. From dynamic advertising to real-time updates and interactive features, Android 13 enhances the player's adaptability to diverse use cases.

### **Powerful Hardware for Seamless 4K Playback**

Designed for performance, this digital signage player handles 4K Ultra HD content with ease, delivering sharp, vibrant, and lifelike visuals. Its robust hardware ensures smooth operation even with demanding multimedia content, allowing businesses to captivate their audiences with visually striking displays.

### **Versatile Connectivity Options**

This player is equipped with multiple connectivity options, including HDMI, USB, Ethernet, and Wi-Fi, ensuring seamless integration with various display systems and networks. Whether installed in a single location or deployed across multiple sites, the device supports real-time updates and centralized content management, streamlining operations and enhancing efficiency.

### **Compact and Energy-Efficient Design**

The sleek and compact design of this media player allows for easy installation in a variety of setups, from wall-mounted displays to freestanding kiosks. Additionally, its energy-efficient operation minimizes power consumption, making it a sustainable choice for businesses aiming to reduce operational costs.

### **Applications Across Industries**

This digital signage player is versatile and adaptable to a wide range of applications:

1. **Retail:** Drive customer engagement with dynamic advertisements, promotions, and product displays.
2. **Corporate:** Streamline internal communication with vibrant, real-time informational displays.
3. **Education:** Enhance learning environments with interactive content and announcements.
4. **Public Spaces:** Provide timely updates on transportation schedules, events, and public notices.

### **Interactive Features for Enhanced Engagement**

Supporting interactive content, this device empowers businesses to create touch-screen experiences for wayfinding, product selection, and more. This feature enhances user engagement and transforms passive screens into interactive communication tools.

### **Reliable 24/7 Performance**

Built for durability, the Digital Signage Player is designed for continuous 24/7 operation, making it ideal for environments with high usage demands. Its advanced cooling system ensures consistent performance, even during extended use.

### **Conclusion**

The [\*\*Digital Signage Player with Android 13 OS\*\*](#) is the ultimate solution for businesses looking to elevate their visual communication strategies. Combining robust hardware, versatile connectivity, and the intuitive Android 13 platform, it empowers organizations to deliver captivating 4K content that engages and inspires audiences. Whether for retail, corporate, educational, or public applications, this player offers the reliability and performance needed to stand out in a crowded marketplace.