

Rockchip RK3588 Octa Core Android 12/Linux Debian11 8K WiFi6 4G RAM 16GB ROM TV Box

Specifications

Model No.	Rockchip RK3588 TV Box
CPU	Rockchip RK3588 8nm process, quad-core Cortex-A76 + quad-core Cortex-A55
GPU	ARM Mali-G610 MC4 OpenGL ES 1.1/2.0/3.1/3.2 Vulkan 1.1, 1.2 OpenCL 1.1,1.2,2.0 Embedded high performance 2D image acceleration module
NPU	6 TOPS (Supports int4/int8/int16/FP16/BF16/TF32)
RAM	4GB/8GB (64bit LPDDR4/LPDDR4x)
ROM	32G/64G/128G/256G (eMMC5.0/ 5.1)
WiFi	Type IEEE 802.11a/b/g/n/ac/ax Frequency Wi-Fi6 2.4GHz/5.8GHz (PCIe v3.0) Antenna Type 2T2R
OS	Android 12 and Multi-Language
Bluetooth	Bluetooth 5.0

Video&Audio CODEC

Video Codec	<ul style="list-style-type: none"> * Real-time video decoder of MPEG-1,MPEG-2,MPEG-4,H.263,H.264,H.265,VC-1,VP9,VP8 MVC,AV1 * MMU Embedded * Multi-channel decoder in parallel for less resolution * H.264 AVC/MVC Main10 L6.0 : 8K@30fps (7680x4320) * VP9 Profile0/2 L6.1 : 8K@60fps (7680x4320) * H.265 HEVC/MVC Main10 L6.1 : 8K@60fps (7680x4320) * AVS2 Profile0/2 L10.2.6 : 8K@60fps (7680x4320) * AV1 Main Profile 8/10bit L5.3 : 4K@60fps (3840x2160) * MPEG-2 up to MP : 1080p@60fps (1920x1088) * MPEG-1 up to MP : 1080p@60fps (1920x1088) * VC-1 up to AP level 3 : 1080p@60fps (1920x1088) * VP8 version2 : 1080p@60fps (1920x1088)
Audio Codec	<p>Video Encoder</p> <ul style="list-style-type: none"> * Real-time H.265/H.264 video encoding * Support up to 8K@30fps * Multi-channel encoder in parallel for less resolution * Dual 16M Pixel ISP with HDR&3DNR <p>I2S0 with 8 channels</p> <ul style="list-style-type: none"> * Up to 8 channels TX and 8 channels RX path * Audio resolution from 16bits to 32bits * Sample rate up to 192KHz <p>Provides master and slave work mode, software configurable</p> <ul style="list-style-type: none"> * Support 3 I2S formats (normal, left-justified, right-justified) * Support 4 PCM formats (early, late1, late2, late3) * Support TDM normal, 1/2 cycle left shift, 1 cycle left shift, 2 cycle left shift, right shift mode serial audio data transfer * I2S, PCM and TDM mode cannot be used at the same time

I/O Port

Power Supply	DC 12V/2A Power ON: Blue
RTC	Support
IR	Infrared + BT Voice Remote
HDMI	HDMI OUT 1:HDMI 2.1/7680x4320@60Hz HDMI OUT 2:HDMI 2.1/4096x2304@60Hz HDMI IN:HDMI 2.0/HDMI 1.4b 4K x 2K video formats(3840x2160p@24Hz/25Hz/30Hz and 4096x2160p@24Hz)

Earphone	1*3.5mm Port
Ethernet	Ethernet 1:1*1000M(RGMII) Ethernet 2:1*1000M
TF Card	1*TF Card
USB port	2*USB 2.0 (Host) 1*USB3.0 (Host)
Type-C	1*Type C 3.0 (Download Port) Supported Devices



Rockchip RK3588

Next generation Octa-Core processor with high performance AI system-on-module



8K Ultra High Quality

Unlock the potential of 8K video output and 4K video input.
Rich details display to let you see the world more clearly.



4K 3840×2160



8K 7680×4320



WiFi 6

WiFi6 is faster and has a larger capacity

WiFi 5 3.5Gbps

WiFi 6 9.6Gbps

2T2R 802.11 ax/ac/a/b/g/n



BT 5.0



Android 12/Linux Debian11

Compatible with Android and Linux operating systems



Multi-Screen Different Display

Enhance your viewing experience with multi-screen display.
Perfect for immersive, high-definition, multi-screen interactive scenarios.



Large Memory Capacity

Large storage capacity up to 32GB RAM and 128GB ROM, which allows you to install a wide number of applications.

RAM



4G

8G

16G

32G

ROM



16G

32G

64G

128G



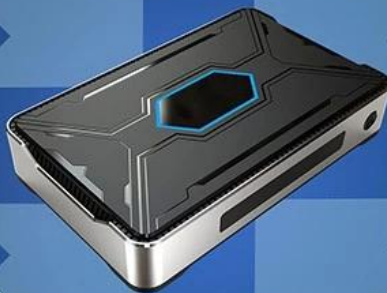
WHAT CAN WE DO?



Watch movies



Working Conference

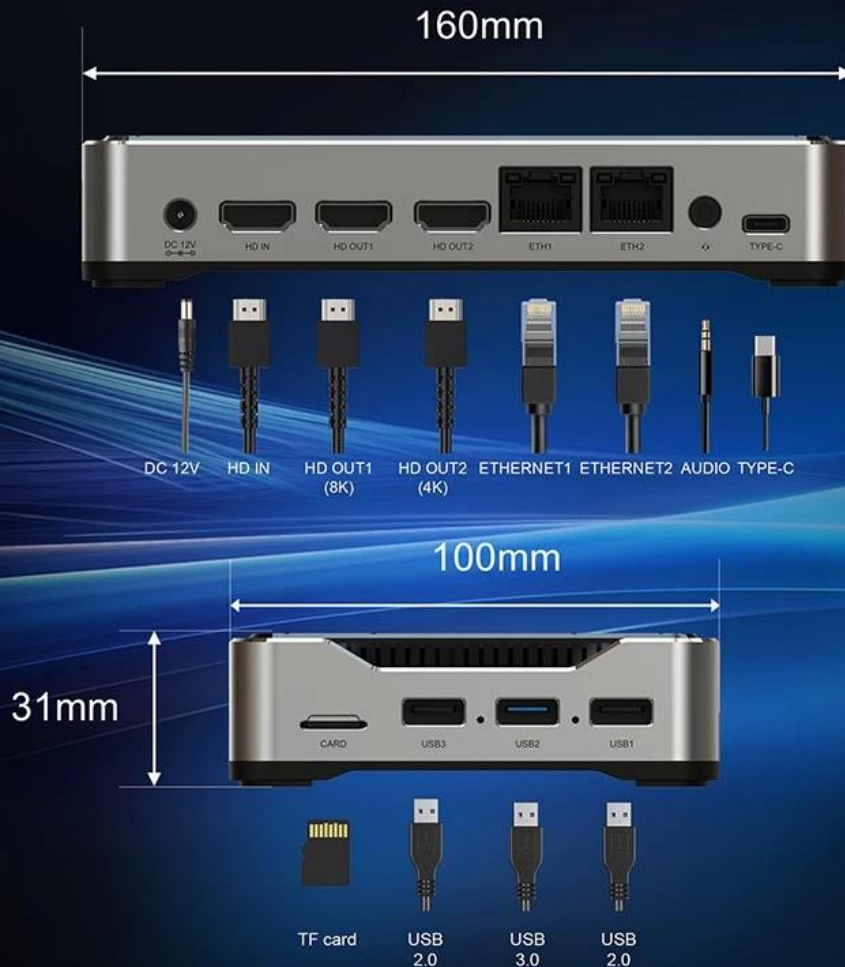


Teaching



Play games

Interface & Dimension



Introduction

The Rockchip RK3588 Octa Core TV Box is designed for users who demand the best in both entertainment and productivity. This device is not just a TV box; it's a powerful computing unit that brings the versatility of Android 12 and Linux Debian 11 into your living room. Whether you're streaming movies in 8K resolution, playing graphics-intensive games, or using it as a mini-PC, the RK3588 delivers a seamless experience.

Advanced Octa Core Processing Power

At the heart of the Rockchip RK3588 is an Octa Core CPU, engineered to handle even the most demanding tasks with ease. Paired with 4GB of RAM, this TV box offers smooth multitasking, quick app launches, and efficient handling of complex applications. The 16GB of internal storage provides ample space for your favorite apps, games, and media, with the option to expand storage via external devices. This powerful combination ensures that the RK3588 can handle everything from simple streaming to more intensive tasks like video editing or running server applications.

Dual Operating System Flexibility

One of the unique features of the Rockchip RK3588 is its dual operating system support, allowing you to switch between Android 12 and Linux Debian 11. Android 12 offers a user-friendly interface with access to a wide range of apps and games from the Google Play Store, making it ideal for entertainment. On the other hand, Linux Debian 11 provides a more robust environment for users who need a full-fledged desktop experience, perfect for developers, IT professionals, and tech enthusiasts. This dual-OS capability makes the RK3588 not just a TV box, but a versatile tool that can be used for work and play alike.

8K Video Playback and High-Quality Graphics

The RK3588 supports 8K video playback, ensuring that you can enjoy the highest quality content available. The device's Mali-G610 GPU renders stunning visuals, bringing out the best in movies, games, and other media. Whether you're streaming the latest movies in ultra-high definition or playing the most demanding Android games, the RK3588 provides an immersive experience with sharp details, vibrant colors, and smooth motion.

WiFi 6 for Fast and Reliable Connectivity

In today's connected world, having a stable and fast internet connection is crucial. The Rockchip RK3588 is equipped with WiFi 6, the latest wireless standard that offers faster speeds, greater capacity, and lower latency compared to previous generations. This means that whether you're streaming 8K content, downloading large files, or playing online games, your connection will remain stable and fast, minimizing buffering and lag.

Enhanced User Experience

Beyond its impressive processing power and video capabilities, the RK3588 also offers a range of features designed to enhance your overall user experience. HDMI 2.1 ensures that you can connect to the latest displays and enjoy high-resolution content with HDR support. Multiple USB ports provide flexibility for connecting peripherals, external storage, and more. Additionally, the device's energy-efficient design ensures that you can enjoy powerful performance without excessive power consumption, making it both eco-friendly and cost-effective.

Conclusion

The Rockchip RK3588 Octa Core TV Box is a versatile, high-performance device that combines the best of both worlds—entertainment and productivity. With its powerful Octa Core CPU, dual operating system support, 8K video playback, and WiFi 6 connectivity, it's designed to meet the needs of a wide range of users. Whether you're looking to upgrade your home entertainment system, or need a powerful device for work and play, the RK3588 is the ideal choice. It offers a future-proof solution with cutting-edge technology, ensuring that you get the best possible experience, no matter how you use it.