



TF

1 \* TF

USB

2\*USB 2.0 (Type A)

1 \* USB3.0 (Type A)

USB-C

1 \* USB Type C 3.0 (Type C)



# Rockchip RK3588

Next generation Octa-Core processor with high performance AI system-on-module





# 8K Ultra High Quality

Unlock the potential of 8K video output and 4K video input. Rich details display to let you see the world more clearly.



4K 3840×2160

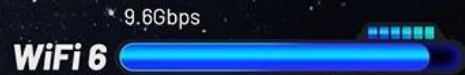
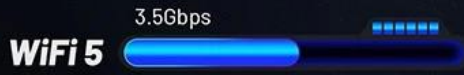


8K 7680×4320



# WiFi 6

WiFi6 is faster and has a larger capacity



2T2R 802.11 ax/ac/a/b/g/n



BT 5.0





# Android 12/Linux Debian11

Compatible with Android and Linux operating systems



# Multi-Screen Different Display

Enhance your viewing experience with multi-screen display.  
Perfect for immersive, high-definition, multi-screen interactive scenarios.





# Large Memory Capacity

Large storage capacity up to 32GB RAM and 128GB ROM, which allows you to install a wide number of applications.

RAM



4G

8G

16G

32G

ROM



16G

32G

64G

128G





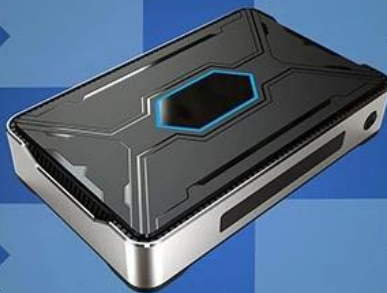
# WHAT CAN WE DO?



Watch movies



Working Conference



Teaching



Play games

# Interface & Dimension



此款電視盒採用最優質的 **IPTV 4K** 晶片，搭載 **Octa-Core** 處理器 **RK3588**，  
 支援 4K 超高清畫質，提供極致的視覺享受。此外，它還具備多種接口，  
 方便連接各種設備。其小巧的體積和簡潔的設計，使其成為家庭娛樂系統  
 的理想選擇。

該電視盒支持 **4K** 超高清畫質，為您帶來更清晰、更細膩的畫面。  
 它還具備 **IPTV 4K UHD** 功能，讓您的娛樂體驗更上一層樓。此外，  
 它還支持 **HDR** 高動態範圍技術，能展現更豐富的色彩和更強的對比度。  
 無論是觀看電影還是電視節目，都能為您提供最優質的視覺享受。



Rockchip RK3588 IPTV  
2.4GHz 5GHz  
5GHz  
4K  
IPTV

2.4GHz 5GHz  
5GHz  
4K

3.0  
USB

Rockchip RK3588 H.265  
4K

Android  
Android  
Google Play Plug-and-Play HDMI

4K IPTV  
Octa-Core Rockchip RK3588  
IPTV  
4K  
UHD