

# Amlogic S922X Octa Core 9



Amlogic S922X	
Processor	Amlogic S922X ARM® Cortex™ A73 64 ARM® Cortex™ A53
GPU	GPU ARM Mali-G52 MP4
RAM	2GB/4GB LPDDR4
Storage	16GB/64GB eMMC
OS	Android 9.0
<b>CODEC</b>	
Video	Amlogic Video Engine (AVE) HW UHD 4K H.265 75fps 10 1080p H.265/H.264 60fps 4Kx2K@60fps1x1080P@60fps " " VP9-2 4Kx2K@60fps H.265 HEVC MP-10@L5.1 4Kx2K@60fps AVS2-P2 4Kx2K@60fps H.264 AVC HP@L5.1 4Kx2K@30fps H.264 MVC 1080P@60fps MPEG-4 ASP@L5 1080P@60fps (ISO-14496) WMV/VC-1 SP/MP/AP 1080P@60fps AVS-P16(AVS) /AVS-P2 JiZhun 1080P@60fps MPEG-2 MP/HL 1080P@60fps (ISO-13818) MPEG-1 MP/HL 1080P@60fps (ISO-11172) RealVideo 8/9/10 1080P@60fps H.265/H.264 1080P@60fps MJPEG JPEG (ISO/IEC-10918) JPEG *mkv,*wmv,*mpg,*mpeg,*dat,*avi,*mov,*iso,*mp4,*rm *.jpg Optional, HDR10, HDR10, HLG PRIME HDR
Audio	JPEG H.265/H.264 JPEG H.265/H.264 1080P@60fps HDMI 2.1 PHY CEC, Dynamic HDR HDCP 2.2, 4Kx2K@60 C VBS 480i/576i SD/HD/FHD : 480i/p, 576i/p, 720p, 1080i/p 4Kx2K MIPI 4 1920*1080 MP3, AAC, WMA, RM, FLAC, Ogg 7.1/5.1 SPDIF/IEC958 PCM TDM/PCM/I2S 3 TDM/PCM 84kHz x32bits x 8ch 96kHz x 32bits x 32ch I2S 384kHz x 32x8ch PDM CIC, LPF HPF DMIC 8 DAC PCM I2SPCM
Display	HD MPEG1/2/4, H.265/HEVC, HD AVC/VC-1, RM/RMVB, Xvid/DivX3/4/5/6, RealVideo8/9/10
Formats	Avi/Rm/Rmvt/Ts/Vob/Mkv/Mov/ISO/wmv/asf/flv/dat/mpg/mpeg
Audio	MP3/WMA/AAC/WAV/OGG/DDP/TrueHD/HD/FLAC
Image	HD JPEG/BMP/GIF/PNG/TIFF

<p> <input type="checkbox"/> USB      USB2.0, <input type="checkbox"/> 480Mbps/USB3.0, <input type="checkbox"/> 5.1Gbps  <input type="checkbox"/>      <input type="checkbox"/>  <input type="checkbox"/> HDMI      HDMI 2.2/1ch Lvds/1ch EDP  <input type="checkbox"/>      <input type="checkbox"/> RJ45 <input type="checkbox"/> 100/1000M  <input type="checkbox"/> <input type="checkbox"/> AP6398S(<input type="checkbox"/>) 2.4G5.8G  <input type="checkbox"/> 4G      <input type="checkbox"/> PCIE  <input type="checkbox"/> <input type="checkbox"/> microSD (<input type="checkbox"/> 128G)  <input type="checkbox"/> <input type="checkbox"/> SATA Max2TB (<input type="checkbox"/>) </p>	
<p> <input type="checkbox"/> <input type="checkbox"/> 12V DC/3AΦ5.5*Φ2.5 </p>	

roid  
  3  AI

AI  s922x  Amlogic  
 CPU  GPU,  
 4K  HDR  CPU  
 S922x  CPU arm cortex-a73  
 dual core cortex-a53  Neon SIMD  
 Ave-10  
 4kx2k  75   
 (TVP)   
 MVC, MPEG-1/2/4, vc-1 /WMV, AVS, AVS , avs2 realvideo,  
 MJPEG, H.264, h265-10, VP9  JPEG   
 JPEG  h.265/h.264  1080p, 75   
 4kx2k @ 60fp (3840 \* 2160)  hdmi2.2  4K  V  
 HDCP 2.2,  DAC,  CVBS,  Mipi  
 DSI 4 ,  I/O  TDM, PCM, I2S  SPDIF ,  
 PDM (dmic)  8  DVP   
 2x2 WiFi ( 2.4G  5.8G) 4.1  
 Gigabit Ethernet

- o Amlogic  ARM® Cortex™ A73  64  ARM® Cortex™ A53
- o  GPU ARM Mali-G52 MP4
- o HW UHD 4K.H.265 75fps  10  1080p H.265/H.264 60fp sencoder
- o Dolby Vision  HDR10, HDR10, HLG  PRIME HDR
- o  Cortex-M4 core
- o  TrustZone  DRM

o WIFI, BT, USB, SD, 雙通道網路, 雙通道音訊

o 雙通道網路, 雙通道音訊

Amlogic S922X 雙通道網路, 雙通道音訊 Android 雙通道 OTT/IPTV Set Top Box (STB) 雙通道網路 CPU 雙通道, 雙通道 GPU, 雙通道 CODEC 雙通道 4K 雙通道 HDR 雙通道 AP 雙通道

CPU 雙通道 Big 雙通道 CPU ARM Cortex-A73 雙通道 Quad-Core 雙通道 Cortex-A53 雙通道 Dual-Core 雙通道 L2 雙通道 CPU core 雙通道 NEON SIMD 雙通道

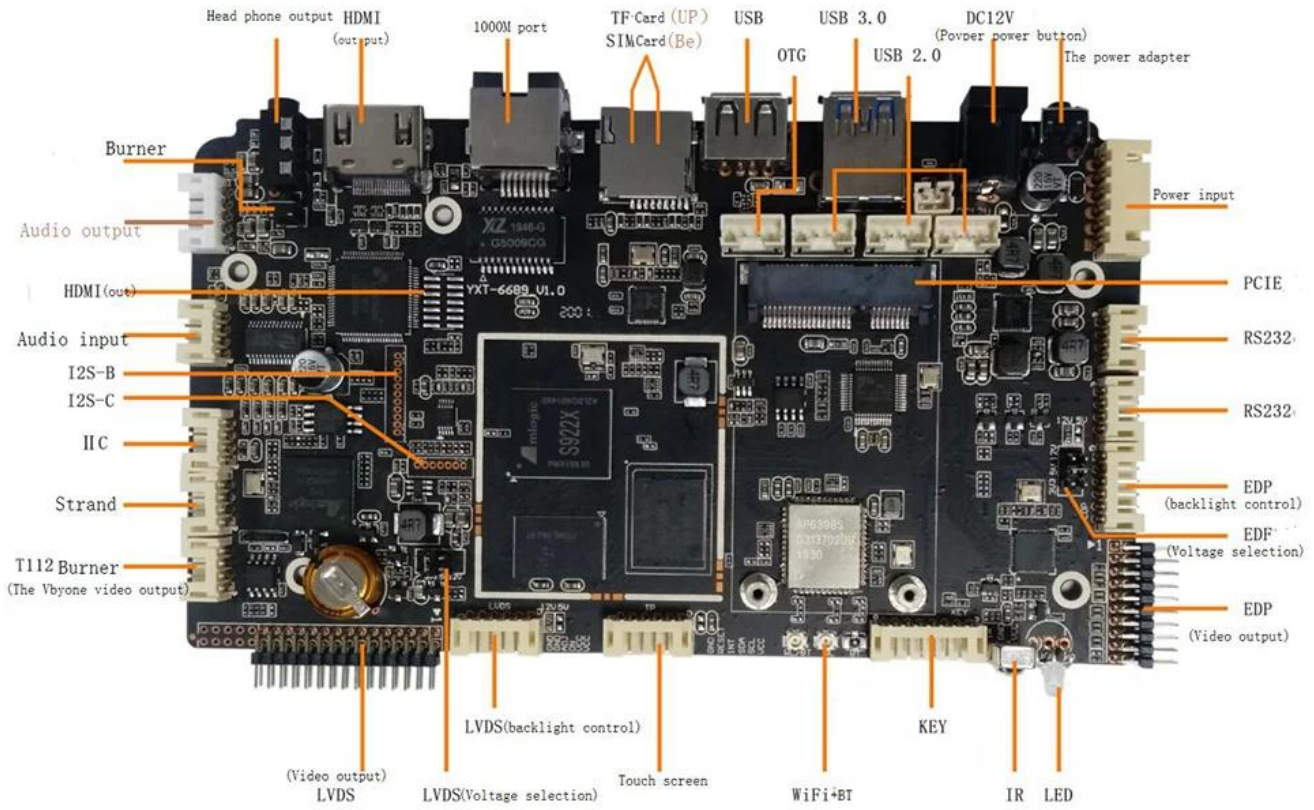
雙通道 GPU ARM Mali-G52 MP4 雙通道 OpenGL ES 3.2 Vulkan 1.0 雙通道 OpenCL 2.0 雙通道 2.5D 雙通道 CPU 雙通道 GPU 雙通道 HDR10, HDR10, HLG 雙通道 PRIME HDR 雙通道 Dolby Vision, 雙通道 REC709/BT2020, 雙通道 1080p 雙通道 60fps

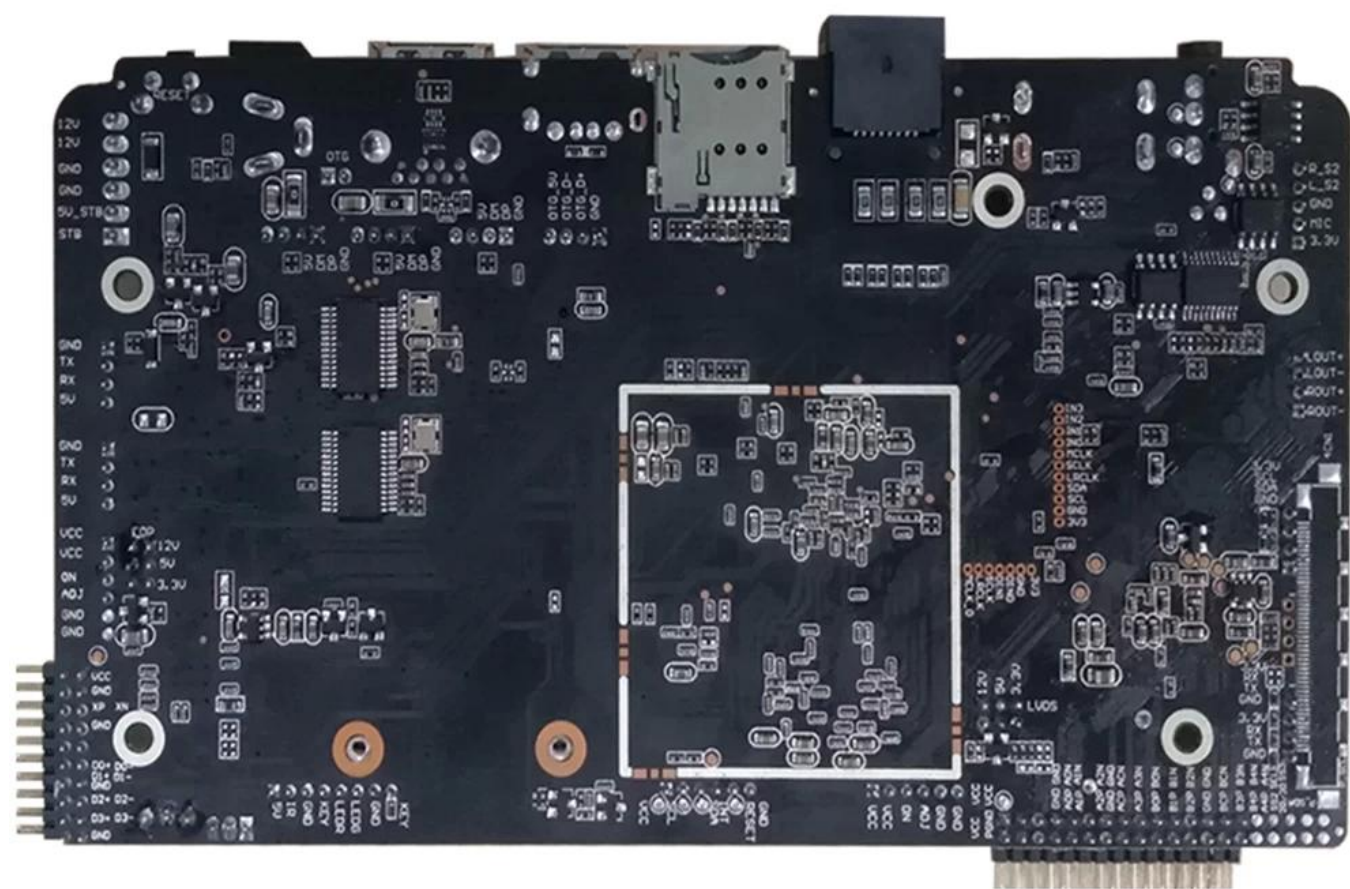
Amlogic Video Engine (AVE-10) 雙通道 Cortex-A53 雙通道 CODEC 雙通道 AVE-10 雙通道 4Kx2K 雙通道 75fps 雙通道 Trusted Video Path (TVP) 雙通道 MVC, MPEG- 1/2/4, VC-1/WMV, AVS, AVS, AVS2 RealVideo, MJPEG 雙通道, H.264, H265-10, VP9 雙通道 JPEG 雙通道 H.265/H.264 雙通道 1080p 雙通道 60fps

Amlogic S922X 雙通道 / 雙通道 HDMI2.1 雙通道 3D, Dynamic HDR, CEC 雙通道 HDCP 2.2, DAC 雙通道, 雙通道 CVBS, 雙通道 4 雙通道 MIPI DSI, 雙通道 TDM, PCM, 雙通道 I2S 雙通道 SPDIF, 雙通道 PDM (DMIC) 雙通道 8 雙通道 DVP

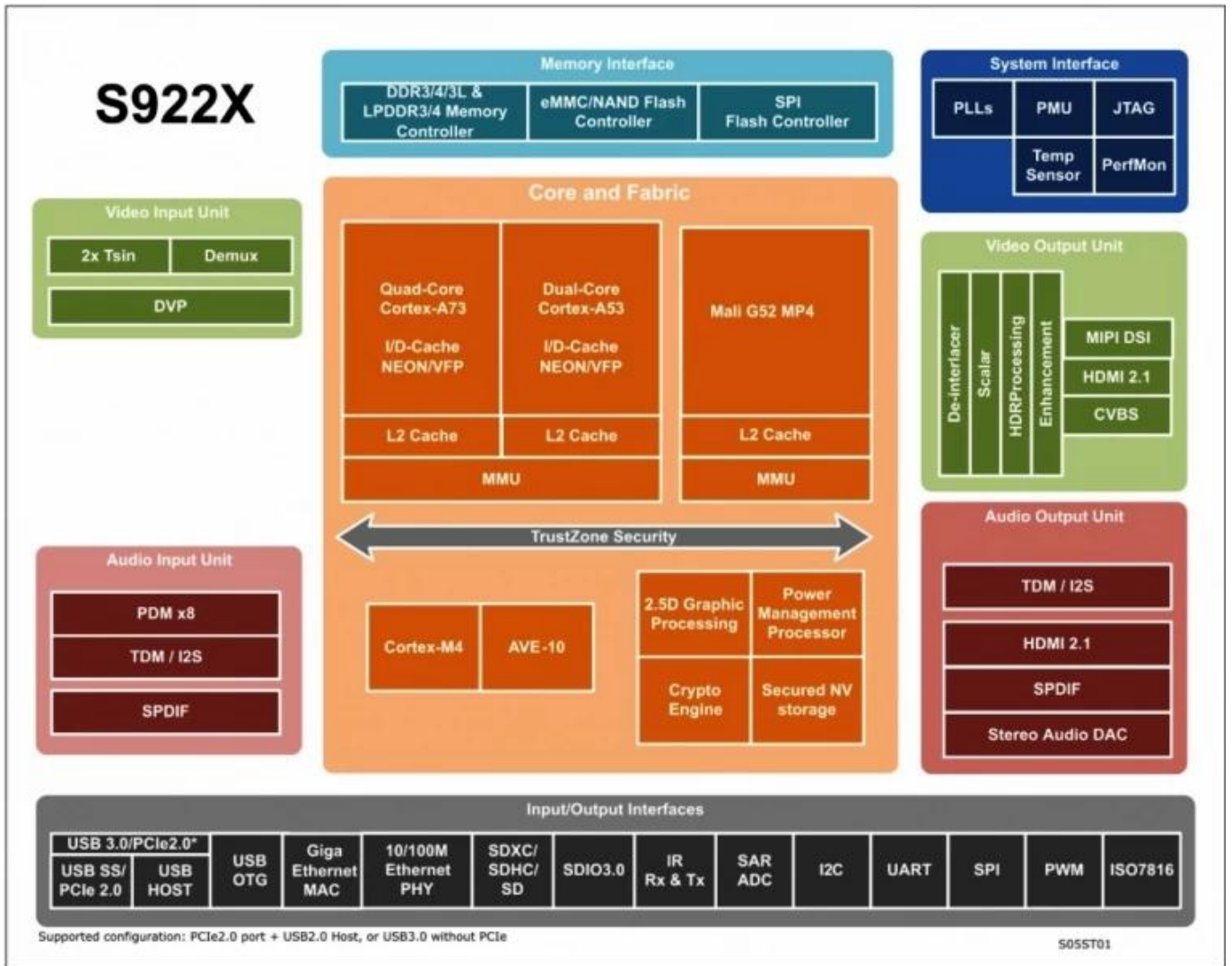
Amlogic S922X 雙通道 demuxcan 雙通道 雙通道

雙通道 Ethernet MAC 10/100/1000M 雙通道 RGMII, Ethernet PHY 10/100M, 雙通道 USB XHCI OTG 2.0 雙通道, USB3.0 雙通道 PCIe 雙通道









**OTT Amlogic S922X Octa Core Android 9**

Amlogic S922X Octa-Core Android 9 is a powerful SoC designed for OTT applications. It features an octa-core processor with four Cortex-A73 cores and two Cortex-A53 cores, providing high performance for video playback and processing. The SoC is equipped with a Mali G52 MP4 GPU, which supports 4K video playback and HDR10 and Dolby Vision content. The S922X also includes a TrustZone security module and a Cortex-M4 microcontroller for secure boot and system management. The SoC is highly configurable and supports a wide range of input and output interfaces, making it a versatile choice for OTT devices.

**HDR10 and Dolby Vision** support is a key feature of the S922X, enabling high-quality video playback. The Mali G52 GPU is capable of rendering 4K content with HDR10 and Dolby Vision, providing a rich and immersive viewing experience. The SoC also includes a video input unit with 2x Tsin and a demux, as well as a video output unit with de-interlacer, scalar, HDR processing, and enhancement capabilities. This makes the S922X an ideal choice for OTT devices that require high-quality video playback.

**Android 9** is the operating system of choice for the S922X, providing a rich and feature-rich user experience. The SoC is fully certified for Android 9 and supports a wide range of applications, including Netflix, Amazon Prime Video, Disney, and YouTube. The SoC also includes a Google Play store, making it easy for users to download and install their favorite apps. The S922X is a powerful and versatile SoC that is well-suited for OTT applications.

Android

WiFi (2.4GHz 5GHz) 4K WiFi 4.1 USB SD

4GB 16GB USB SD 3.0

The Plug-and-Play

Amlogic S922X Octa Core Android 9 4K