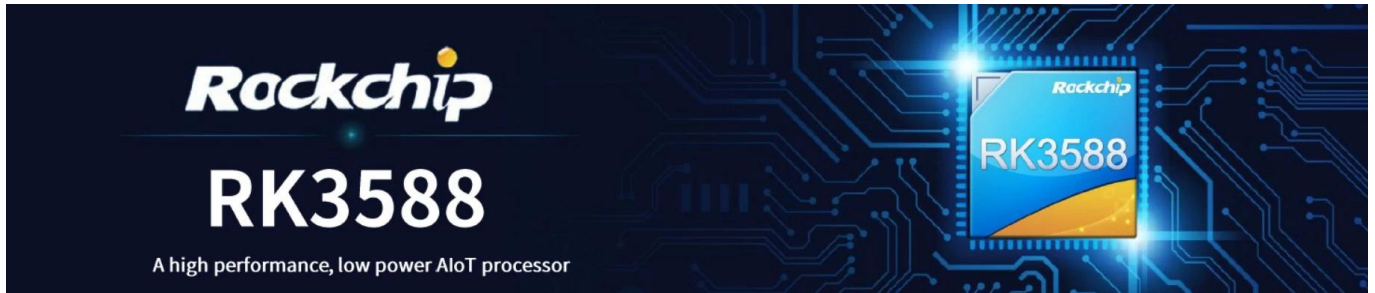


Rockchip RK3588 Octa Core Android 12

Rockchip RK3588 Octa Core Android 12: 8K



Product Overview

Product Name	Rockchip RK3588 OTT
Processor	Rockchip RK3588 8 Core, Quad-Core Cortex-A76 Quad-Core Cortex-A55
GPU	ARM Mali-G610 MC4 OpenGL ES 1.1/2.0/3.1/3.2 Vulkan 1.1, 1.2 OpenCL 1.1,1.2,2.0
AI Acceleration	2D Acceleration
IO Acceleration	6 Acceleration (int4/int8/int16/FP16/BF16/TF32)
RAM	4GB/8GB (64-bit LPDDR4/LPDDR4x)
Storage	32G/64G/128G/256G (eMMC5.0/ 5.1)
Network	IEEE 802.11a/b/g/n/ac/6E
Connectivity	Wi-Fi6 2.4GHz/5.8GHz (PCIe v3.0)
Video	2T2R
OS	Android 12
Security	5.0

Media Features

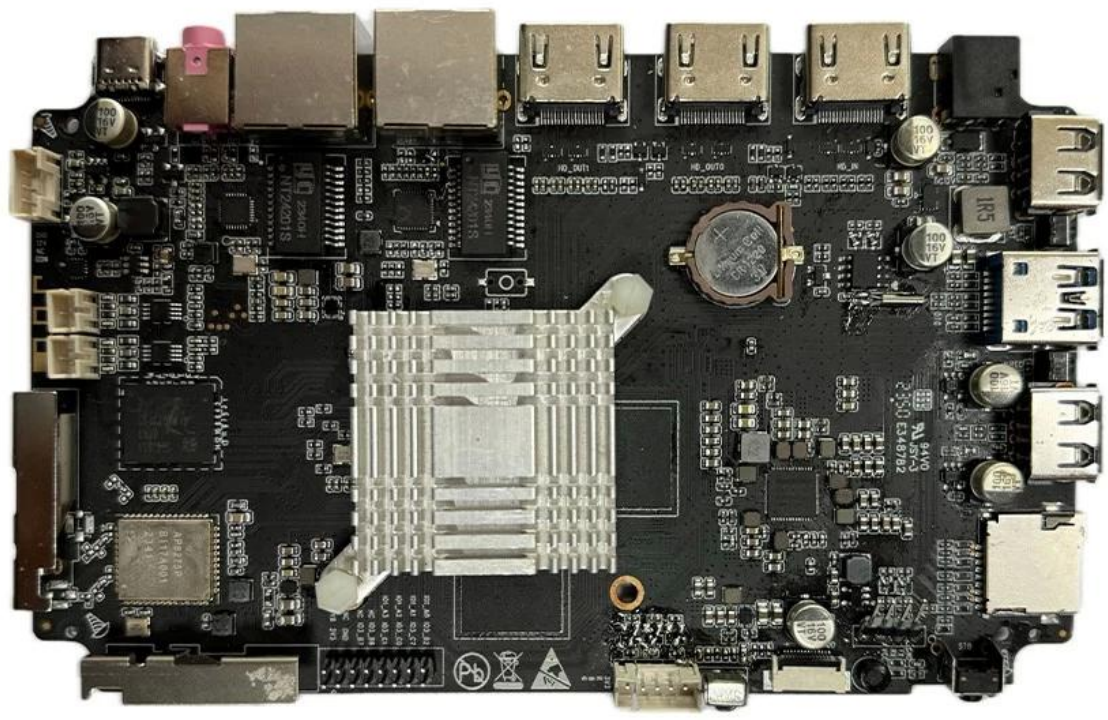
Video Decoding: MPEG-1, MPEG-2, MPEG-4, H.263, H.264, H.265, VC-1, VP9, VP8 MVC, AV1
MMU: 2T2R
Video Encoding: H.264 AVC/MVC Main10 L6.0 : 8K@30fps (7680x4320)
VP9/2 L6.1 : 8K@60fps (7680x4320)
H.265 HEVC/MVC Main10 L6.1 : 8K@60fps (7680x4320)
AVS2 Profile0/2 L10.2.6 : 8K@60fps (7680x4320)
AV1 Profile0/2 L5.3 : 4K@60fps (3840x2160)
MPEG-2 Profile@MP : 1080p@60fps (1920x1088)
MPEG-1 Profile@MP : 1080p@60fps (1920x1088)
VC-1 Profile@AP : 1080p@60fps (1920x1088)
VP8 Profile@VP8 : 1080p@60fps (1920x1088)

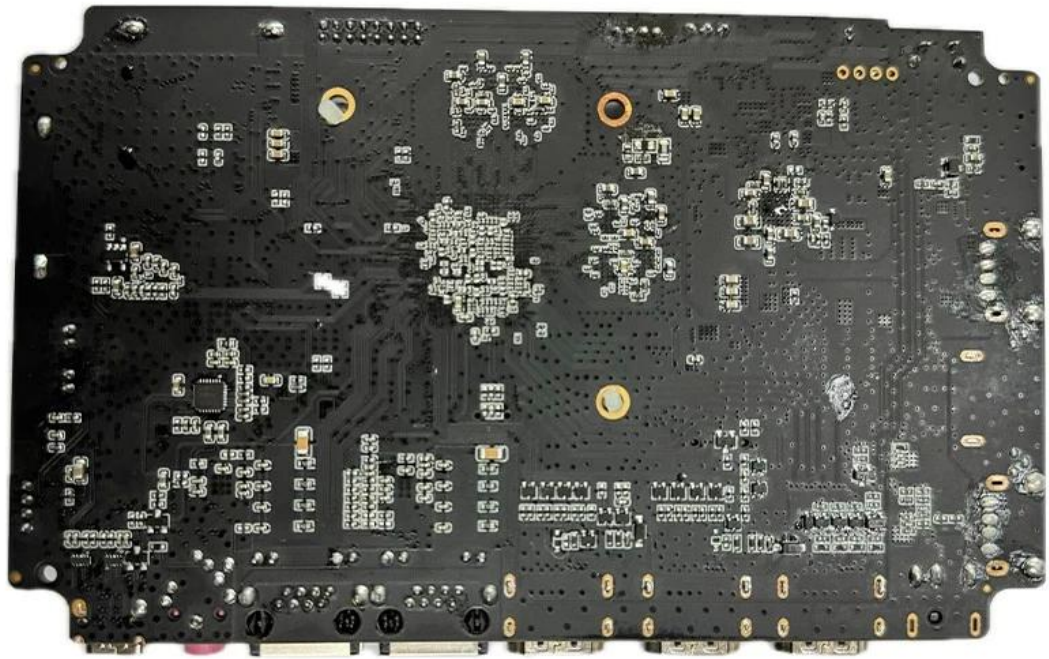
ISP: 16M, HDR&3DNR
I2S0: 8 Channels
I2S1: 8 Channels TX, 8 Channels RX
I2S2: 16 Channels, 32 Channels
I2S3: 192KHz

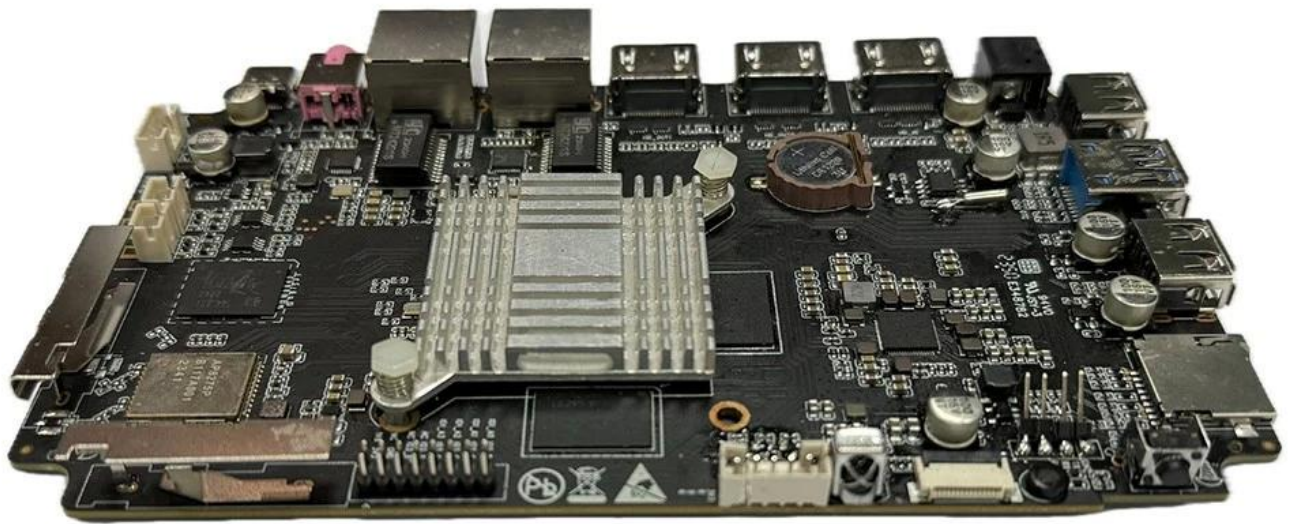
Audio: 3 Channels I2S (early, late1, late2, late3)
4 Channels PCM (early, late1, late2, late3)
TDM: 1/2 Channels, 1 Channel, 2 Channels
I2S, PCM, TDM

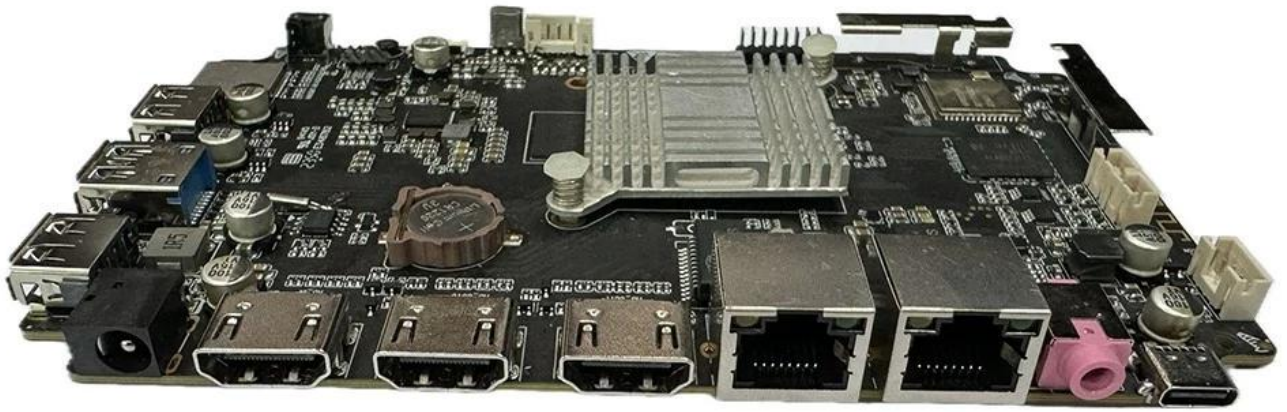
Other Features

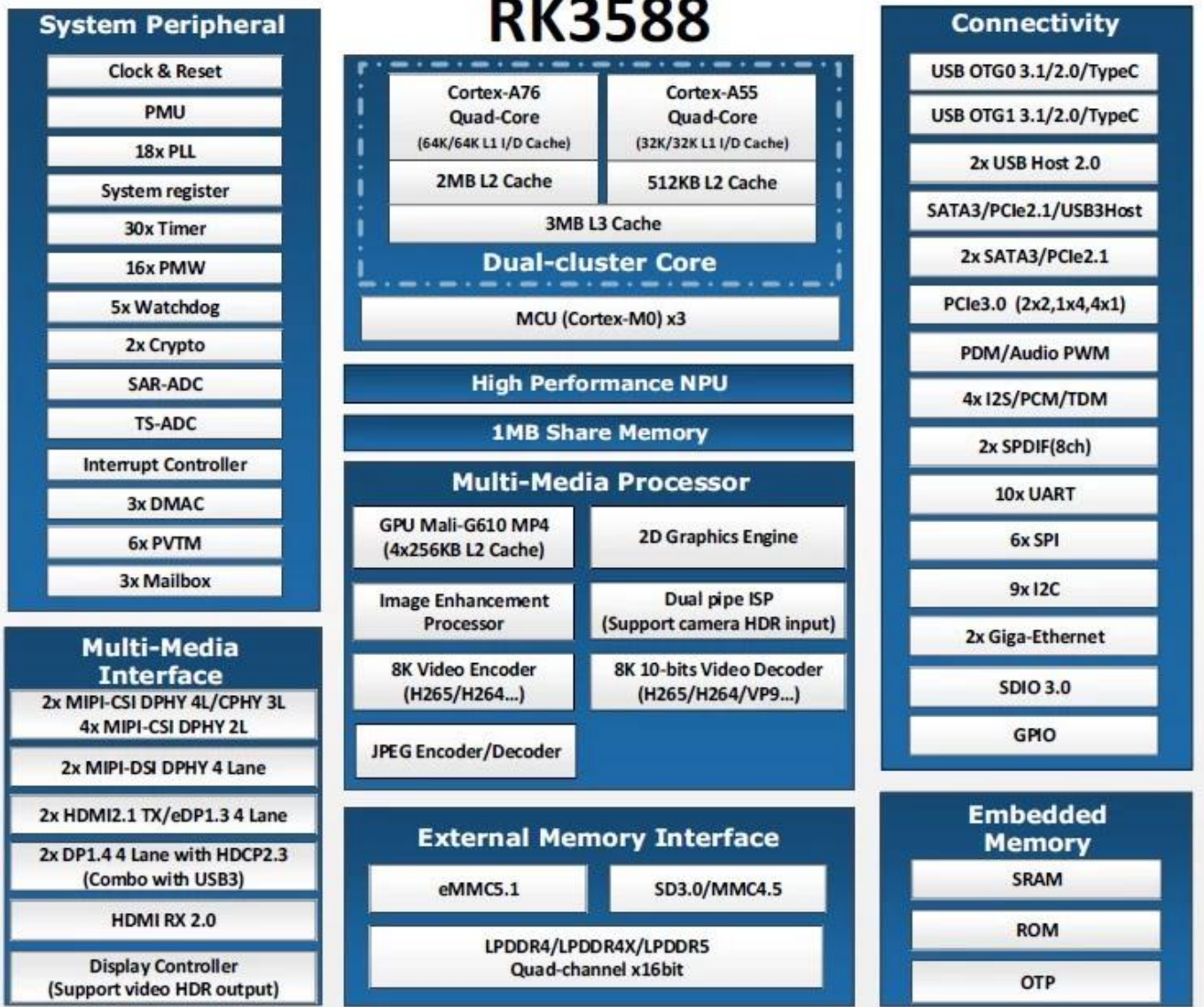
電源	DC 12V/2A 電源規格: 5V/2A
ディスプレイ	ディスプレイ
接続規格	無線LAN規格 BT
HDMI	HDMI OUT 1: HDMI 2.1/7680x4320@60Hz HDMI OUT 2: HDMI 2.1/4096x2304@60Hz HDMI IN: HDMI 2.0/HDMI 1.4b 規格 4K x 2K (3840x2160p@24Hz/25Hz/30Hz) 規格 4096x2160p@24Hz
オーディオ	オーディオ 1*3.5 mm
ネットワーク	ネットワーク 1:1*1000M(RGMII) ネットワーク 2:1*1000M
ストレージ	1 * 2TB TF
USB	2*USB 2.0 (規格) 1 * USB3.0 (規格)
Type-C	1 * USB Type C 3.0 (規格)











Typical Application Diagram – AIoT



